

**AERONAUTICAL
INFORMATION
CIRCULAR (AIC)****H13/26****Effective: 202604301600 UTC**

AERONAUTICAL INFORMATION SERVICE,
AIRSERVICES AUSTRALIA, GPO BOX 367,
CANBERRA ACT 2601

For **DISTRIBUTION** queries, contact:
Email: aim_editorial@airservicesaustralia.com

For **CONTENT** queries regarding this AIC, contact:
Email: airsideworks@perthairport.com.au

PERTH AERODROME (YPPH) AIRFIELD PAVEMENT RENEWAL PROJECT

1. INTRODUCTION

- 1.1 This AIC is to provide forward notification of airfield pavement renewals and surface treatment works at Central Domestic Apron, Terminal 3/Terminal 4 Apron, and Terminal 1 International and Domestic Aprons. These works will be staged to minimise disruption to operators. This project is essential to extend the serviceable life of the airfield infrastructure.
- 1.2 All works disrupting aircraft operations will be advised via distribution of a Method of Working Plan (MOWP), which will be available via the Perth Aerodrome website two weeks prior the project commencement:
www.perthairport.com.au/Home/corporate/work-with-us/operating-at-perth-airport/airside-works-at-perth-airport
- The MOWP will be also available at Perth Aerodrome's Extranet under the Airfield Works section.
- 1.3 The actual date and time of works will be advised by a NOTAM.
- 1.4 Pavement surface renewals are planned for:
- a) **TWY W and W Lane (at TWY R Intersection)**
 - 100mm asphalt mill and replace
 - 50mm asphalt mill and replace within the aircraft wheel paths
 - Pavement surface rejuvenation

- b) **Apron Taxiway/T3 Taxilane/Bays 20A/Bays 21 to 24/Bays 901 to 918 (Terminal 3/Terminal 4 Apron)**
 - 100mm and 50mm asphalt mill and replace within aircraft wheel paths
 - Pavement surface rejuvenation
 - Localised concrete slab replacement
 - Crack sealing
 - Concrete pads at tug locations on Bays 23 and 24
- c) **600/700 Lanes/Bays 601 to 604/Bays 701 to 703 (Central Domestic Apron)**
 - 50mm asphalt mill and replace patching
 - Pavement surface rejuvenation
 - Crack sealing
 - Additional 50mm and 100mm asphalt mill and replace patching at main and nose gear locations
- d) **H Lane/H3/H4 and Link 1 (Central Domestic Apron)**
 - Pavement surface rejuvenation (H Lane, H4 and Link)
 - 50mm asphalt mill and replace within the aircraft wheel paths (H3)
- e) **Bays 143 to 154 (Terminal 1 Apron)**
 - 50mm and 100mm asphalt mill and replace patching at concrete and asphalt interface between apron and Link 4
 - Concrete pads at tug locations on Bays 144 to 151
 - Replacement of proud fuel hydrant slab and lid within aerobridge operating area of Bay 151
 - Concrete slab spall and crack repair
- f) **Bays 501 to 508 (Central Domestic Apron)**
 - 100mm asphalt mill and replace patching
 - Crack sealing

g) **Compass Swing Bay (Central Domestic Apron)**

- 30mm asphalt mill and replace
- Pavement surface rejuvenation

Refer to *Appendix 1* for maps showing works areas.

2. WORKS PROGRAM

- 2.1 The works will be undertaken in stages to minimise disruption to operators and distributed via a MOWP.
- 2.2 The works are expected to commence in May 2026 and be completed in March 2027.
- 2.3 Aircraft parking bay closures for surface treatments will be coordinated with Perth Aerodrome's Airport Control Centre (ACC).

3. OPERATIONAL INFORMATION

- 3.1 Normal scheduled A380 operations will be unaffected by these works.
- 3.2 Airfield ground lighting in the affected areas will be unavailable for portions of the works period within each individual stage.

4. TECHNICAL QUESTIONS AND ADVICE

- 4.1 For additional information or clarification of information contained within this circular please contact Perth Aerodrome Airside Works Team

Email: airsideworks@perthairport.com.au

5. CANCELLATION

- 5.1 This AIC will remain in effect until updated or all works are completed (expected March 2027).

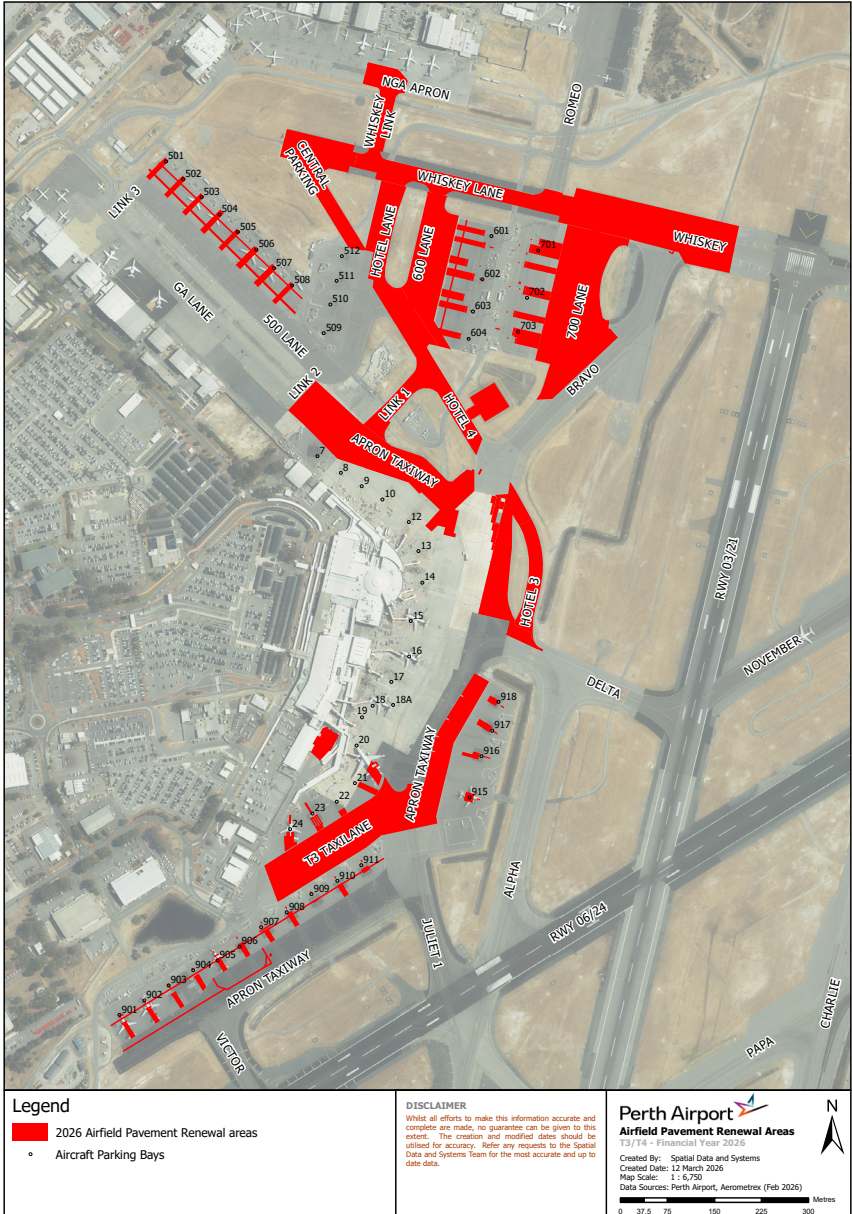
6. DISTRIBUTION

- 6.1 Airservices Australia website only.

Appendices

1. Areas of Works at Central Domestic Apron and Terminal 3/Terminal 4 Apron
2. Areas of Works at T1 Apron (Domestic and International)

**1. Areas of Works at Central Domestic Apron and Terminal 3/
Terminal 4 Apron**



2. Areas of Works at T1 Apron (Domestic and International)

