

MORUYA**ELEV 19****AVFAX CODE 2123**

NSW

UTC +10

YMRY

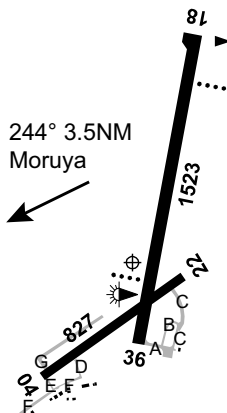
355351S

1500844E

VAR 13 DEG E

CERT

AD OPR Eurobodalla Shire Council, PO Box 99, Moruya, NSW, 2537. Email: airport@esc.nsw.gov.au. ARO Phone/Fax 4474 2095: 0409 037 520 (H24). Council PH 02 4474 1000: AH EMERG 1800 755 760.

**REMARKS**

- AD Charges: All ACFT
- This AD is a Security Controlled Airport.

HANDLING SERVICES AND FACILITIES

World Fuel Services: H24 self-serve bowser JET A1, AVGAS, phone 0409 037 520, World Fuel Services cards or V and MC via smartphone APP. Call-out fee applies.

PASSENGER FACILITIES

TX 02 4474 3455/HC 02 6495 3444.

AERODROME OBSTACLES

Lit TWR 186 DEG MAG 1.4NM FM ARP 342FT AMSL.

METEOROLOGICAL INFORMATION PROVIDED

- TAF CAT C, METAR/SPECI.
- AWIS PH 02 9353 6436 - Report faults to BoM.
- AWIS FREQ 136.6 (requires one-second pulse to activate) - Report faults to AD OPR.

PHYSICAL CHARACTERISTICS

04/22	043	27a	5700/450 (65PSI)	WID 18	RWS 80
18/36	179	50a	PCN 10 /F /B /655 (95PSI) /U	WID 30	RWS 150

AERODROME AND APPROACH LIGHTING

RWY 18/36	LIRL(1)	PAL+AA 122.4		SDBY PWR AVBL
RWY 18/36	PAPI(2)	PAL+AA 122.4	3.0 DEG39.5FT	SDBY PWR AVBL

- PAL activation - minimal delay between pulses.
- Left side. PAL activation- minimal delay between pulses.

RWY edge light spacing: 18/36: 60M.

OTHER LIGHTING

- Secondary PWR switchover time: 20 SEC.
- TWY LGT: Blue edge on main TWY BTN RWY 36 THR and RPT APN.

ATS AND AERODROME COMMUNICATION FACILITIES

FIA	MELBOURNE CENTRE	120.75 1,500FT
-----	------------------	----------------

LOCAL TRAFFIC REGULATIONS

1. GA PRKG on grassed areas ADJ to eastern sealed APN is preferred.
2. ACFT on RWY may not be visible to each other. Make radio call before rolling.

CTAF - AFRU 132.05**ADDITIONAL INFORMATION**

1. Bird hazard exists.
2. Intensive parachute OPS GND to FL150. If unfamiliar CTC jump pilot via CTAF.

CHARTS RELATED TO THE AERODROME

1. WAC 3456.
 2. Also refer to AIP Departure and Approach Procedures.
-