

**SUNSHINE COAST****ELEV 15****AVFAX CODE 4005**

QLD

UTC +10

YBSU

263612S

1530528E

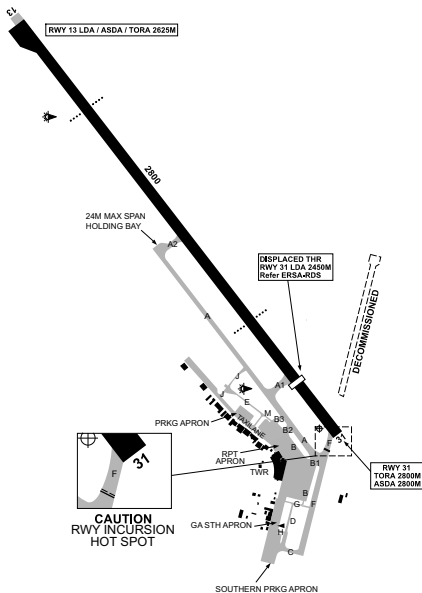
VAR 11 DEG E

CERT

AD OPR Sunshine Coast Airport Pty Ltd, PO Box 9535, Pacific Paradise, QLD, 4564.

PH 1300 993 543. ARO 0419 658 272. PH AH 07 3830 5251.

Website: www.sunshinecoastairport.com.au.

**REMARKS**

- AD Charges and Conditions of Use apply to any use of the AD - see website or contact AD OPR for details.
- Airside access AH requires a call-out (fees apply).
- This AD is a Security Controlled Airport.

**HANDLING SERVICES AND FACILITIES**

Viva Energy Australia (Airport Refuelling Services): DLY 2200-0700. PH 07 5448 7114, AH 0408 711 968. AVGAS, JET A1.

MACHJET - FBO H24 DLY. PH 0447 182 351 or 07 5457 0778. Email: fbo@machjet.com.au. Full FBO services.

SWISSPORT - FBO email: charters@swissport.com.au or info@skycare.co.nz. PH 0403 455 443.

FLIGHT OPTIONS – FBO PH +61 439 761 124 H24. Email: fbo@flightoptions.com.au.

**General**

AD OPR does not provide marshalling services.

**PASSENGER FACILITIES**

PT/TX/HC/BU/LG/RF/WC/ME

**RESCUE AND FIREFIGHTING SERVICES**

- CAT 7:
  - MON 1945-1325 UTC.
  - TUE 1945-1145 UTC.
  - WED 1945-1300 UTC.
  - THU 1915-1145 UTC.
  - FRI 1945-1250 UTC,
  - SAT 1945-1115 UTC.

- g. SUN 1915-1115 UTC.
2. 131.0 MHz AVBL HO.
3. Water Rescue Service AVBL.

### AERODROME OBSTACLES

1. Mt Coolum lit 710FT AMSL BRG 340 DEG MAG 2.53NM FM ARP. Infringes inner HZS by 551FT.
2. TWR:
  - a. Lit 834FT AMSL BRG 258 DEG MAG 5.38NM FM ARP.
  - b. Lit communications 212FT AMSL BRG 324 DEG MAG 2.52NM FM ARP. Infringes inner HZS by 49FT.
3. B737/A321 ACFT tail when positioned at TWY F holding point RWY 13/31. Infringes RWY 31 APCH SFC by 14.7FT.
4. Roof unlit 36FT AMSL BRG 084 DEG MAG 240M FM ARP. Infringes RWY 13 TKOF SFC by 4FT.
5. Trees (lit) 257FT AMSL BRG 272 DEG MAG 2.22NM FM ARP. Infringes inner HZS by 95FT.
6. Trees (unlit):
  - a. 56FT AMSL BRG 111 DEG MAG 535M FM ARP, Infringes RWY 13 TKOF SFC by 3FT.
  - b. 54FT AMSL BRG 128 DEG MAG 462M FM ARP, Infringes RWY 13 TKOF SFC by 3FT.
  - c. 52FT AMSL BRG 131 DEG MAG 442M FM ARP, Infringes RWY 13 TKOF SFC by 2FT.
  - d. 179FT AMSL BRG 257 DEG MAG 2.44NM FM ARP, Infringes inner HZS by 17FT.
  - e. 52FT AMSL BRG 309 DEG MAG 3,170M FM ARP, Infringes transitional SFC by 12FT.
  - f. 61FT AMSL BRG 312 DEG MAG 3,411M FM ARP, Infringes RWY 13 APCH SFC by 8FT.
  - g. 69FT AMSL BRG 313 DEG MAG 3,598M FM ARP, Infringes RWY 13 APCH SFC by 4FT.
  - h. 72FT AMSL BRG 314 DEG MAG 3,530M FM ARP, Infringes RWY 13 APCH SFC by 12FT.
  - i. 63FT AMSL BRG 314 DEG MAG 3,453M FM ARP, Infringes RWY 13 APCH SFC by 8FT.
  - j. 59FT AMSL BRG 315 DEG MAG 3,433M FM ARP, Infringes RWY 13 APCH SFC by 6FT.
  - k. 66FT AMSL BRG 316 DEG MAG 3,482M FM ARP, Infringes RWY 13 APCH SFC by 9FT.
  - l. 66FT AMSL BRG 316 DEG MAG 3,469M FM ARP, Infringes RWY 13 APCH SFC by 11FT.
  - m. 562FT AMSL BRG 317 DEG MAG 5.65NM FM ARP, Infringes horizontal section RWY 13 APCH SFC by 49FT.

### METEOROLOGICAL INFORMATION PROVIDED

1. TAF CAT A, METAR/SPECI, AD WRNG.
2. AWIS PH 07 3564 3738 - Report faults to BoM.
3. AWIS FREQ 119.8 AVBL outside TWR HR - Report faults to AD OPR.

### PHYSICAL CHARACTERISTICS

13/31 132 92a PCN 74 /F /B /W /T Grooved WID 45 RWS 300

### AERODROME AND APPROACH LIGHTING

RWY 13/31	MIRL	AFRU+PAL 124.4		SDBY PWR AVBL
RWY 13/31	PAPI	AFRU+PAL 124.4	3.0 DEG67FT	SDBY PWR AVBL
RWY 13/31	RTIL	AFRU+PAL 124.4		SDBY PWR AVBL

1. RWY edge light spacing: 13/31: 58M.
2. RGL at all RWY/TWY intersections.

### OTHER LIGHTING

1. Secondary PWR switchover time: 15 SEC. Does not support TKOF BLW 800M.
2. TWY LGT: Green CL on TWY A, A1, A2, B, B1, B2, B3, J, M, F BTN TWY B1 and RWY 13/31 and Western GA Taxilane.

**ATS AND AERODROME COMMUNICATION FACILITIES**

FIA	BRISBANE CENTRE		129.0 CCT area - on GND COM CTC 135.2 (outside TWR HR)
ATIS	SUNSHINE COAST	(3)	114.2 (1) 119.8 (2)
SMC	SUNSHINE COAST		121.1
	GROUND		
TWR	SUNSHINE COAST		124.4
	TOWER		

(1) H24.

(2) TWR HR only.

(3) Also AVBL on PH 07 5458 2955.

1. TWR HR:

2130-0940 UTC DLY. Phone: 07 5458 2953^.

*Note: TWR HR may change at short notice, check status of airspace with ATS or Sunshine Coast ATIS.*

2. Sunshine Coast TWR provides combined TWR and APP CTL services within Class D airspace 4,500FT AMSL and BLW DRG TWR HR. CTC TWR for a clearance.

3. Outside TWR HR, Sunshine Coast Class D airspace 4,500FT AMSL and BLW becomes Class G.

4. Brisbane Centre operates Sunshine Coast Class C airspace H24.

5. FIA on ground COMS may be AVBL with ATS dependent on ACFT location and building shielding.

**RADIO NAVIGATION AND LANDING AIDS**

DME	SU	114.2/ 89X	263551.7S	1530525.1E		(2)
NDB	SU	380	263531.9S	1530530.2E	Range 50 (HN 50)	(3)
VOR	SU	114.2	263551.7S	1530525.1E		(1)

(1) Coverage reduced in minor arc 169 to 340 due terrain shielding. Radial 169 not to be used outside 40NM. DME ARR is not AVBL on SU VOR 340 radial. Bending and scalloping on 224 radial at low altitudes.

(2) Antenna ELEV 25FT.

(3) 172/0.67 to ARP.

**LOCAL TRAFFIC REGULATIONS**

1. RWY 31: ACFT ABV 80,000KG MTOW to make 180DEG MAX RAD turns following yellow line at RWY end turning node.

2. TWY A BTN TWY A1 and TWY A2, and TWY A2 restricted to MAX wingspan 36M.

3. ACFT Holding Bay AVBL to ACFT MAX wingspan 24M (e.g. E35L), located northern side TWY A2.

**4. TRAINING FLIGHTS**a. All ACFT planning practice instrument APCH and NAVAID training require ATC approval, pilots must book a slot online at [www.bookawk.com](http://www.bookawk.com).b. Circuit training requires ATC approval, pilots must book a slot online at [www.bookawk.com](http://www.bookawk.com). Circuit training permitted only BTN HR of 2100 and 1200 UTC.**5. APRONS AND TAXIWAYS**

a. TWY M and J: restricted to MAX 20M wingspan and 10,000KG.

b. TWY E, D, G and H: restricted to MAX wingspan 15M and 5,700KG (EXCL Cessna 208).

c. TWY B2 and APN TWY B BTN TWY B1 and B3: restricted to MAX B737/A321.

d. TWY B3: restricted to MAX 24M wingspan and 10,000KG.

e. TWY F south of TWY B1 and C: restricted to MAX 36M wingspan (B737/A320).

f. TWY C, D, H, G and F BTN TWY B1 and C: unlit and restricted to HJ OPS only.

g. Code D and Code E ACFT restricted to TWY A1, A BTN A1 and F, TWY B1, APN TWY B BTN B1 and G, TWY F north of TWY B1.

h. TWY G invert into TWY B closed.

**6. PARKING**

- a. Bays 1-3 (south APN) – access via TWY F and C. HJ OPS only.
  - b. Due to security requirements, all ACFT ABV 5,700KG and light jet and turbine ACFT which are not RPT, must obtain prior approval FM AD OPR if they are programmed to stage through or remain at Sunshine Coast. To obtain such approval 48HR notice is required; PH 0419 658 272, AH 07 3830 5251.
  - c. GA ACFT BLW 5,700KG not permitted on main APN without prior approval from AD OPR. Access to the Southern GA APN is via TWY C or G. Access to the Western GA APN is via TWY J, B3 or M.
  - d. Bay 19A and 20A: restricted to ACFT MAX 32M wingspan.
  - e. Bay 19, 19A, 20 and 20A not AVBL to ACFT without prior approval from the AD Operator.
7. ACFT ABV 5,700KG RQ prior approval of AD OPR to OPR BTN HR of 2300 and 0530 Local. PN for HEL OPS RQ (non EMERG).
  8. Ground Running of engines for maintenance purposes RQ prior approval FM ARO.
  9. RPT APN Bays pushback RQ.
  10. CTAF pushback procedures:
    - a. During CTAF, all ACFT on RPT APN Bays RQ to pushback.
    - b. Additional mandatory CTAF ACFT broadcast. ACFT shall broadcast intention to pushback to nominated disconnect point prior to pushback, followed by TAX broadcast when ready as per *AIP GEN*.
  11. Southern APN Bays 1, 2 and 3 HJ only.
  12. Pilots to exercise caution on TWY E, BTN TWY M and TWY J due to lack of VIS FM control TWR.
  13. MAX Code C ACFT to occupy TWY F RWY hold point when ACFT on APCH to RWY 31.
  14. Code D and E ACFT to hold short at INT hold PSN located on APN TWY B south of TWY B1 to inform ATC ready when RWY 31 duty RWY.
  15. TWY F RWY holding PSN not AVBL during low VIS OPS.
  16. TWR may direct ACFT to TAX via TWY M FM western APN to mitigate incursion risk on TWY J.

**FLIGHT PROCEDURES****1. ATC TRAFFIC MANAGEMENT SPEED**

When **not** on a SID or STAR (including vectoring) - ACFT ARR or DEP SU via Class C airspace must not exceed 250KT IAS when BLW 10,000FT AMSL. Advise ATC if a higher speed is operationally required.

*Note: Pilots must also comply with Class D airspace speed limits. Cancellation of ATC traffic management speeds does not cancel Class D airspace speed limits.*

2. Outside TWR HR - ALL ACFT OPR in circuit area are to BCST position and RWY being used when an inbound call is received FM an ACFT joining the circuit or a call is received FM an ACFT about to taxi.
3. Right hand circuits required when OPR RWY 13 except as directed by ATC.

**CTAF - AFRU 124.4**

Outside TWR HR.

**NOISE ABATEMENT PROCEDURES**

Noise Abatement Procedures (NAP) apply. Refer AIP DAP.

**ADDITIONAL INFORMATION**

1. RWY18/36 decommissioned.
2. Southern end of decommissioned RWY 18/36 – TWY F.
3. TWY F RWY holding position located 145M from start of take-off RWY 31.
4. Class D airspace is in close proximity to aerodromes in Class G airspace.
5. Fuel/oil clean-up/disposal are chargeable and must meet Government Environmental standards.
6. Bird and animal hazard exists:
  - a. Flying fox transiting south to north - HN only.
  - b. Nankeen kestrel (birds of prey) present on airfield.
  - c. Australian white ibis flocking on airfield HJ.
  - d. Increased bird ACT due vegetation clearing and construction E and W end of AD.

- 
7. PJE OPS:
    - a. Occasional operations HJ within 1NM of Maroochydore Sporting Complex Oval BRG 194 DEG MAG 3.3NM from ARP, up to FL150.
    - b. DLY HJ at Coolum Beach located BRG 351 DEG MAG 4.0NM from ARP, up to FL150.
  8. Model ACFT OPR WI 300M radius of PSN 264005.61S 1530048.34E, BRG 216 DEG MAG 5.7NM FM ARP, SFC to 1,000FT AGL.

### **CHARTS RELATED TO THE AERODROME**

1. WAC 3340.
  2. Also refer to AIP Departure and Approach Procedures.
  3. Aerodrome Obstruction Chart Type A: December 2023.
-