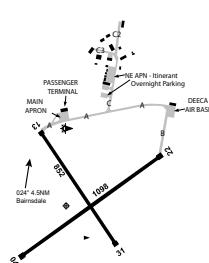


**BAIRNSDALE****ELEV 165****AVFAX CODE 3019**

VIC  
375315S 1473404E UTC +10 YBNS  
VAR 13 DEG E CERT  
AD OPR East Gippsland Shire Council, PO Box 1618, Bairnsdale, VIC,  
3875. ARO 0447 132 980: Back Up 0438 497 697. Website:  
[www.eastgippsland.vic.gov.au/building-and-development/aerodromes](http://www.eastgippsland.vic.gov.au/building-and-development/aerodromes).

**REMARKS**

CTC ARO for pin coded gate  
a. FM APN to terminal; and  
b. FM secondary APN to landside.

**HANDLING SERVICES AND FACILITIES**

H24 World Fuel Services AVGAS and JET A1 self-service bowsers. WFS  
carnet card, V and MC via Compac smartphone APP. PH: 0448 505 577.  
CCTV monitoring fuel facility.

**PASSENGER FACILITIES**

AC/RF/WC/LG (H24 CCTV). TX/HC not readily AVBL, CTC details on LG notice board.

**METEOROLOGICAL INFORMATION PROVIDED**

- TAF CAT C, METAR/SPECI.
- AWIS PH 03 8470 3201 - Report faults to BoM.
- AWIS FREQ 133.725 (Requires one-second pulse to activate). AWIS will transmit for 90 SEC - Report faults to AD OPR.

**PHYSICAL CHARACTERISTICS**

04/22	042	36a	PCN 11 /F /B /560 (81PSI) /T Sealed	WID 18	RWS 90
13/31	132	28a	PCN 11 /F /B /550 (80PSI) /T Sealed	WID 18	RWS 80

**AERODROME AND APPROACH LIGHTING**

RWY 04/22 LIRL PAL+AA 123.9 SDBY PWR AVBL  
RWY 04/22 edge light spacing: 60M.

**OTHER LIGHTING**

- SDBY PWR switchover time: 5 SEC.
- TWY LGT: Blue edge. Activation by PAL 123.9.
- Northern half of RWY 13 after RWY intersection, TWY LGT only no RWY LGT for night OPS.

**ATS AND AERODROME COMMUNICATION FACILITIES**

FIA MELBOURNE CENTRE 124.0 On ground (dependent on ACFT location)

**LOCAL TRAFFIC REGULATIONS**

- All overnight parking, CTC ARO.
- In ground tie down points AVBL at secondary APN, CTC ARO for INFO.
- HEL parking, CTC ARO.
- RWS not prepared for TKOF and landings.

**CTAF** 126.7

**ADDITIONAL INFORMATION**

- Ultralight ACFT OPS at AD.
- Bird hazard may exist WI VCY of AD.
- Model ACFT OPR WI 1,000M RAD of PSN 375630.00S 1473200.00E BRG 192 MAG 3.7NM FM ARP SFC to 1,500FT AGL.
- Increased HEL OPS during summer season for fire EMERG.
- ACFT OPR above published physical characteristics, CTC ARO for pavement concession.

**CHARTS RELATED TO THE AERODROME**

- WAC 3470.
- Also refer to AIP Departure and Approach Procedures.