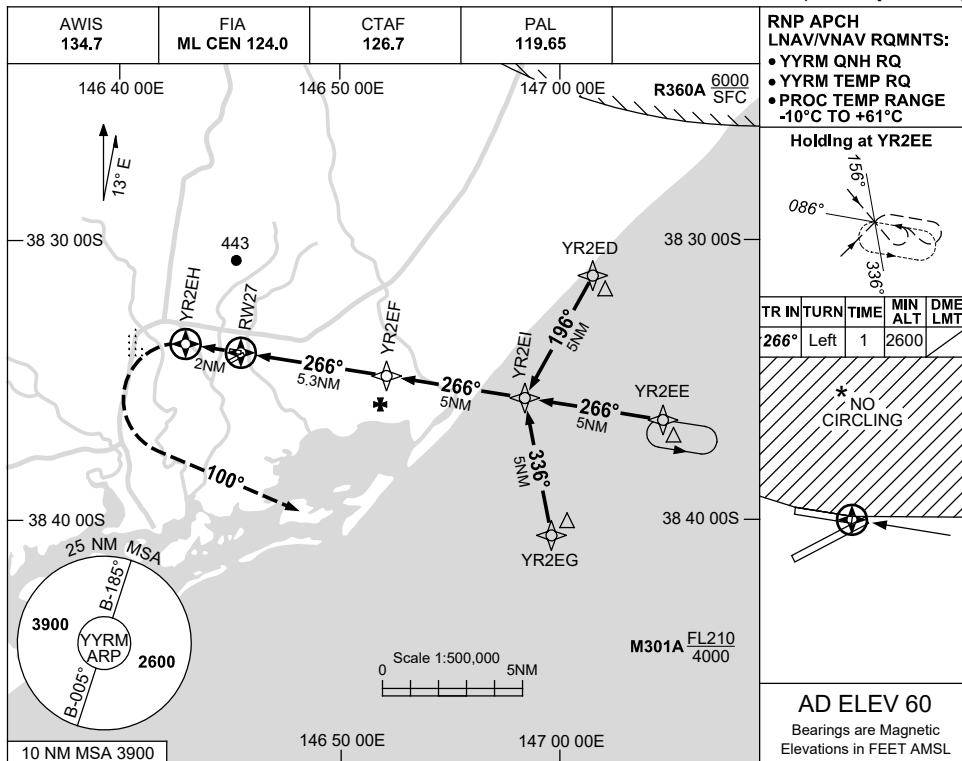


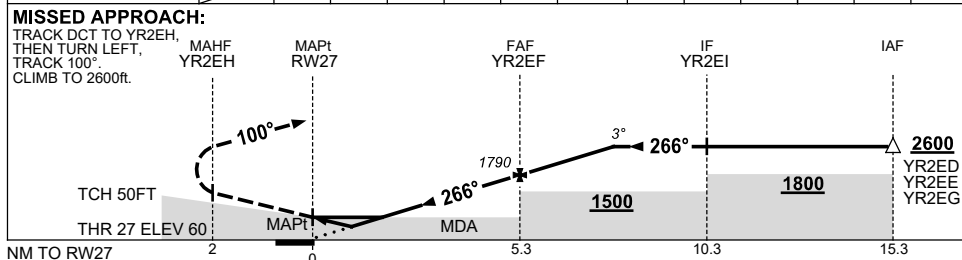
USE QNH

RNP RWY 27
YARRAM, VIC (YYRM)

30 NOV 2023



NM TO NEXT WPT	RW27	1	1.6	2	3	4	YR2EF	1	2	2.5		
ALT (3° APCH PATH)		420	620	750	1070	1380	1790	2110	2430	2600		



NOTES

CATEGORY	A	B	C	D	
LNAV/VNAV	420 (360-2.0)			NOT APPLICABLE	
LNAV	620 (560-3.2)				
CIRCLING *	660 (600-2.4)		760 (700-4.0)		
ALTERNATE	(1100-4.4)		(1200-6.0)		

- 1. MAX IAS : INITIAL : 210KT.
- * 2. NO CIRCLING N OF RWY 09/27.

Changes: R360A REPLACES R359A, M301A REPLACES R359F, Editorial.

YRMGN02-177