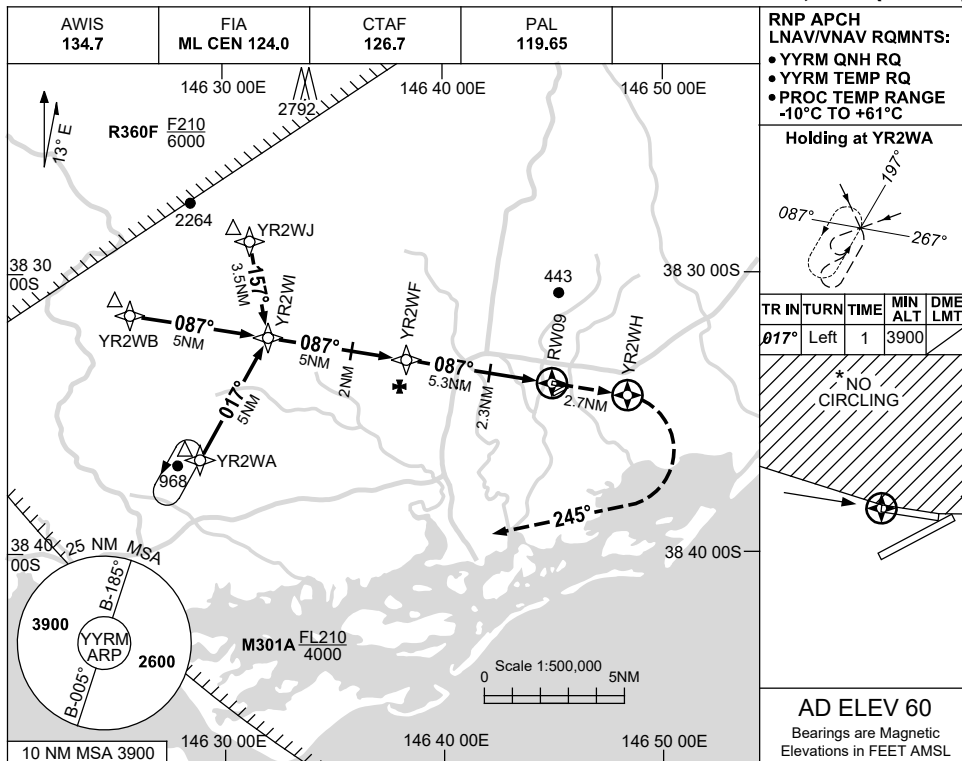


USE QNH

RNP RWY 09
YARRAM, VIC (YYRM)

30 NOV 2023



RNP APCH LNAV/VNAV RQMNTS:

- YYRM QNH RQ
- YYRM TEMP RQ
- PROC TEMP RANGE -10°C TO +61°C

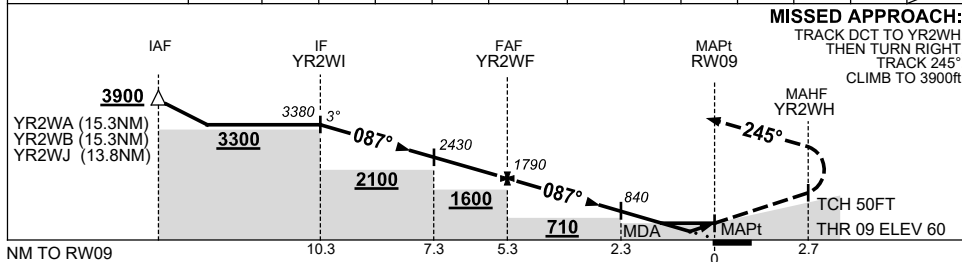
Holding at YR2WA

| TR IN | TURN | TIME | MIN ALT | DME LMT |
|-------|------|------|---------|---------|
| 017° | Left | 1 | 3900 | |

* NO CIRCLING

AD ELEV 60
Bearings are Magnetic
Elevations in FEET AMSL

| NM TO NEXT WPT | YR2WI | 4 | 3 | 2 | 1 | YR2WF | 4 | 3 | 2.3 | 2 | 1.6 | 1 | RW09 |
|--------------------|-------|------|------|------|------|-------|------|------|-----|-----|-----|-----|------|
| ALT (3° APCH PATH) | 3380 | 3060 | 2750 | 2430 | 2110 | 1790 | 1380 | 1070 | 840 | 750 | 620 | 420 | |



NOTES

| CATEGORY | A | B | C | D |
|------------|---------------|---|---------------|----------------|
| LNAV/VNAV | 420 (360-2.0) | | | NOT APPLICABLE |
| LNAV | 620 (560-3.2) | | | |
| CIRCLING * | 660 (600-2.4) | | 760 (700-4.0) | |
| ALTERNATE | (1100-4.4) | | (1200-6.0) | |

- MAX IAS :
YR2WA : 210KT.
YR2WB : 210KT.
YR2WJ : 190KT.
- * 2. NO CIRCLING N OF RWY 09/27.

Changes: R360F REPLACES R359G, M301A REPLACES R359F, Editorial.

YRMGN01-177