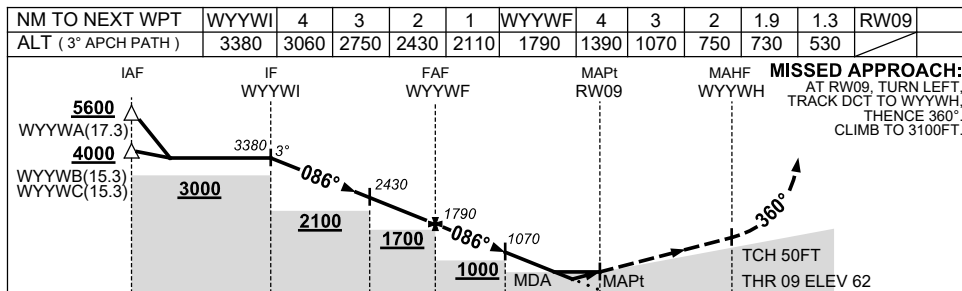
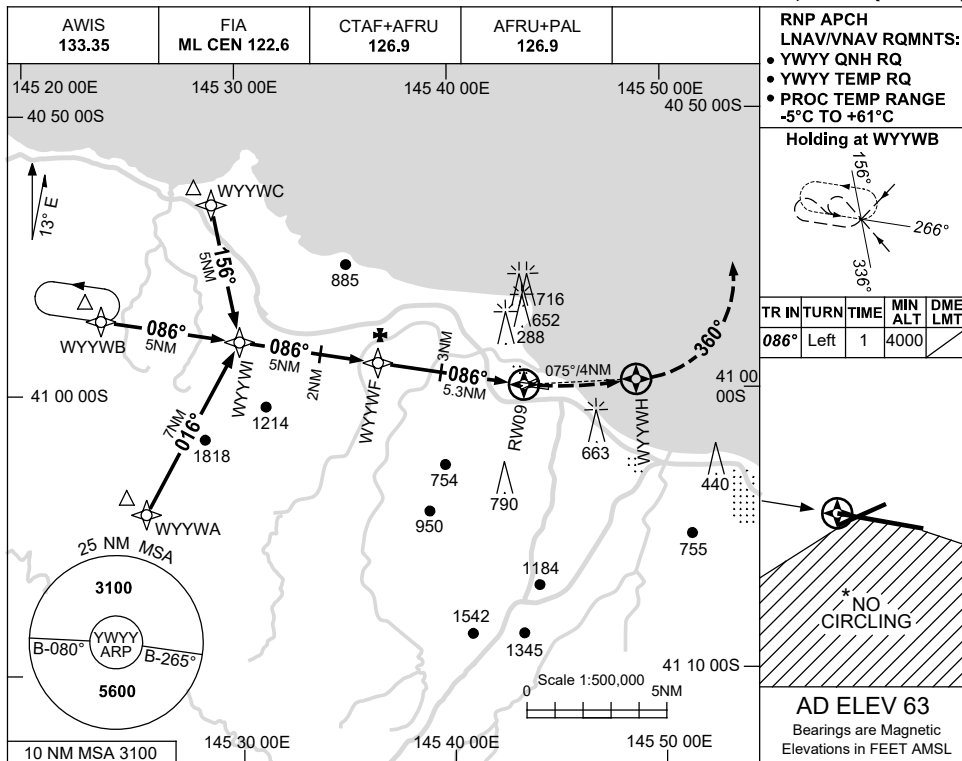


USE QNH

RNP RWY 09

WYNARD, TAS (YWYY)

15 JUN 2023



NOTES

| CATEGORY | A | B | C | D |
|------------|-----------------|---------------|----------------|----------------|
| LNAV/VNAV | | 530 (468-2.6) | | NOT APPLICABLE |
| LNAV | | 730 (667-3.8) | | |
| CIRCLING * | 1170 (1107-2.4) | | 1270(1207-4.0) | |
| ALTERNATE | (1607-4.4) | | (1707-6.0) | |

1. MAX IAS:
INITIAL : 210KT.
- *2. NO CIRCLING SOUTH OF RWY 09/27 & RWY 05/23.

Changes: CHART TITLE, PBN SPECIFICATION BOX, Editorial.

WYYG01-175