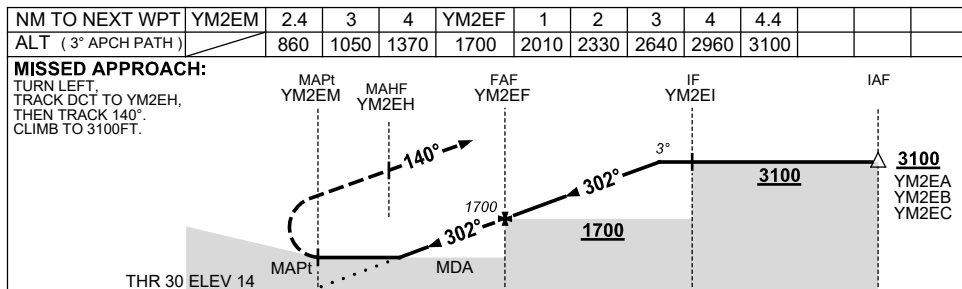
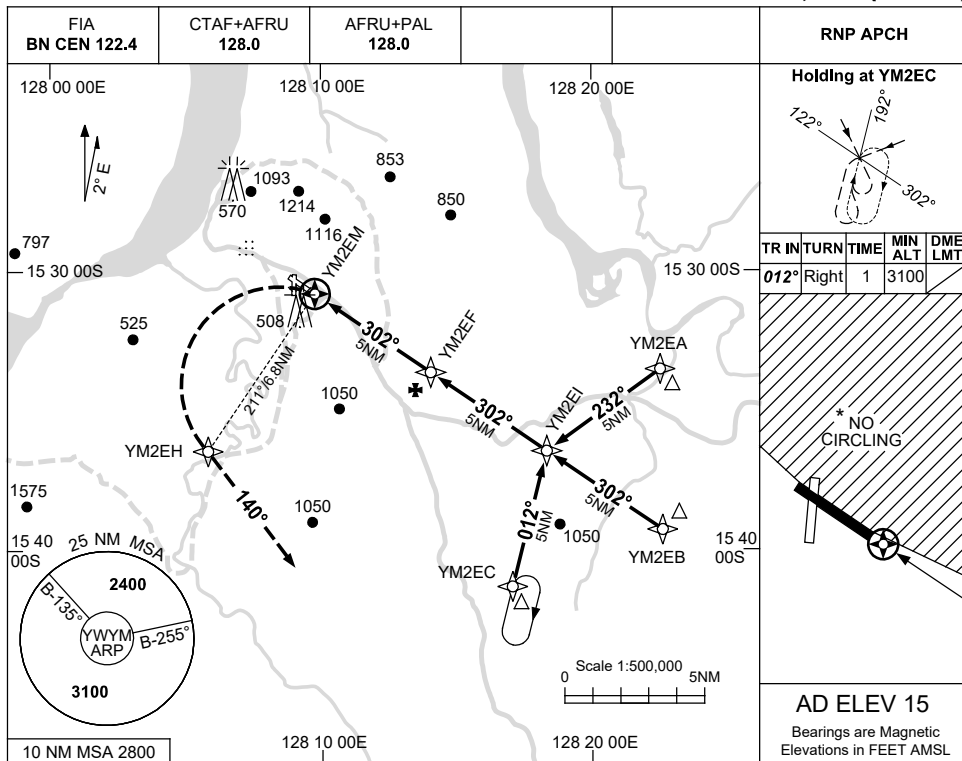


USE QNH

RNP RWY 30
WYNDHAM, WA (YWYM)

8 SEP 2022



NOTES

CATEGORY	A	B	C	D
LNAV	860 (845-4.8)			NOT APPLICABLE
CIRCLING *	1450 (1435-2.4)		1630 (1615-4.0)	
ALTERNATE	(1935-4.4)		(2115-6.0)	

- MAX IAS : INITIAL : 210KT.
- NO CIRCLING NTH OF RWY 12/30.
- AWIS (PHONE) 08 6216 2642

Changes: CHART TITLE, PBN SPECIFICATION BOX.

WYMG02-172