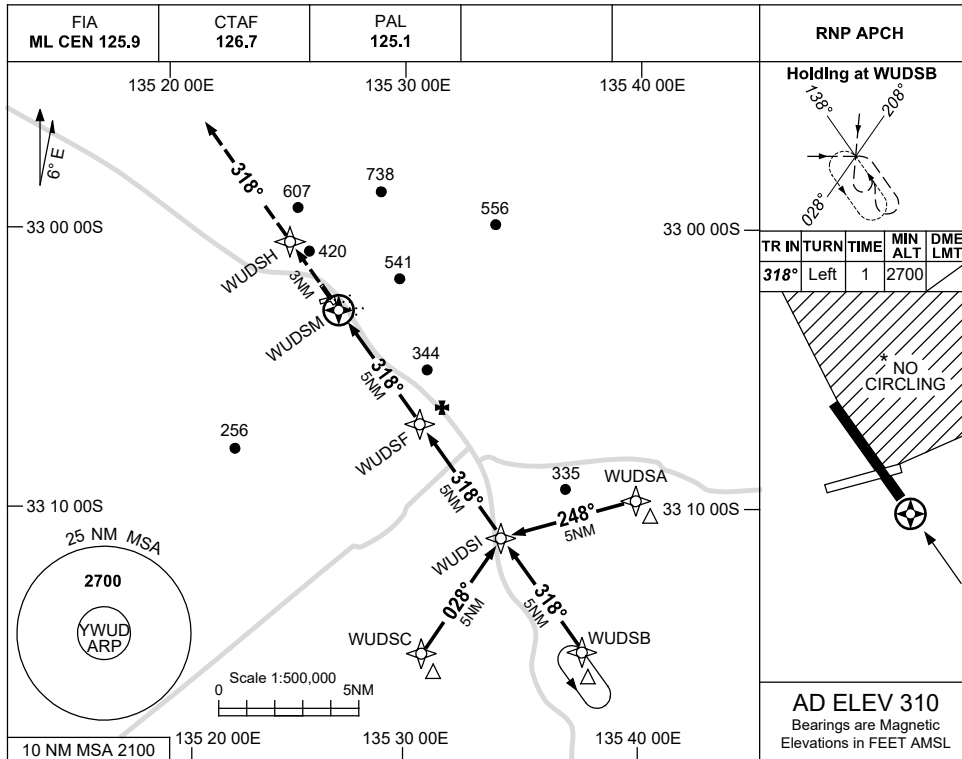


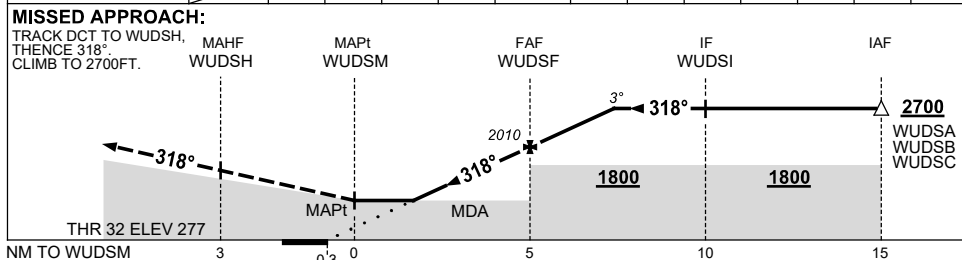
USE QNH

RNP RWY 32  
**WUDINNA, SA (YWUD)**

1 DEC 2022



NM TO NEXT WPT	WUDSM	1.6	2	3	4	WUDSF	1	2	2.2			
ALT (3° APCH PATH)		910	1050	1370	1690	2010	2320	2640	2700			



**NOTES**

CATEGORY	A	B	C	D
LNAV	910 (633-3.6)			NOT APPLICABLE
CIRCLING*	1110 (800-2.4)		1210 (900-4.0)	
ALTERNATE	(1300-4.4)		(1400-6.0)	

- MAX IAS: INITIAL : 210KT.
- NO CIRCLING IN NE SECTOR BETWEEN RWY 14/32 & 07/25.
- AWIS (PHONE) 08 8150 3821

Changes: CHART TITLE, PBN SPECIFICATION BOX.

WUDGN01-173