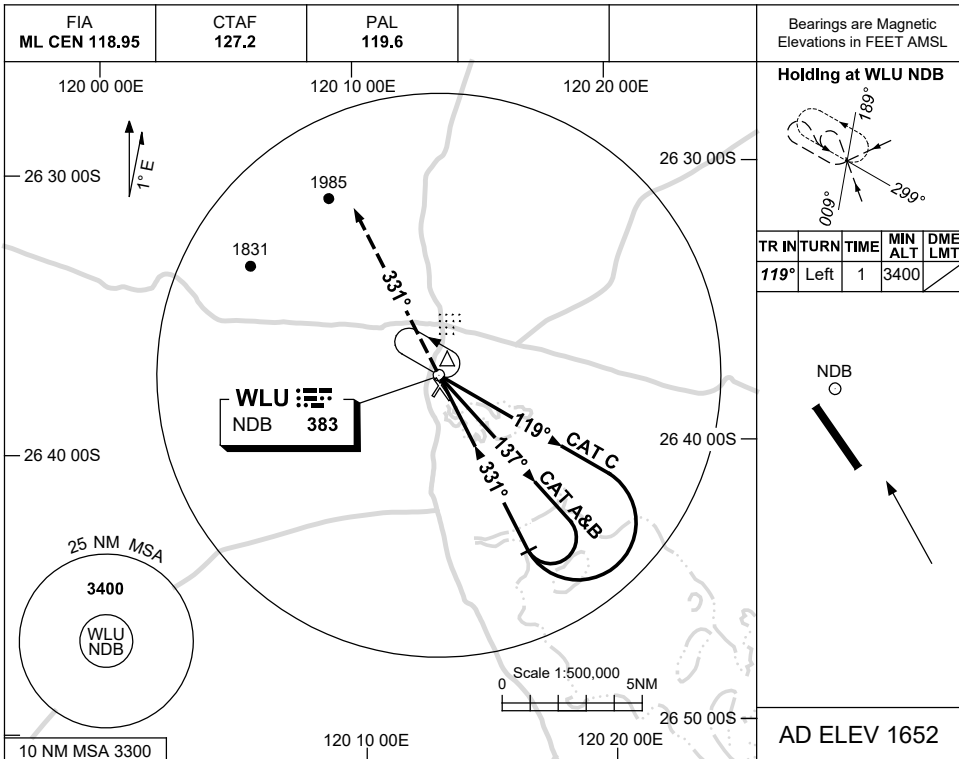


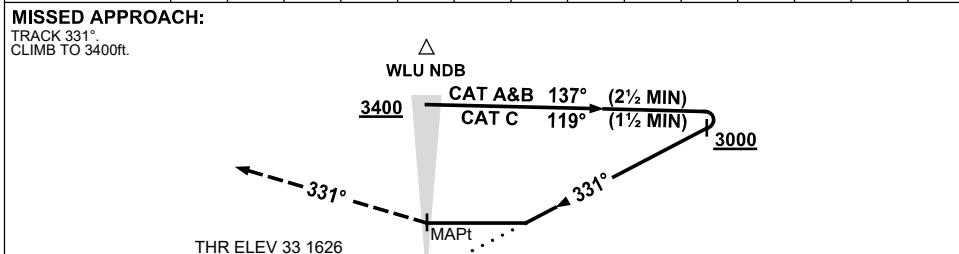
USE QNH

NDB RWY 33  
WILUNA, WA (YWLU)

21 MAR 2024



DME DIST	NOT APPLICABLE							
ALT								



NM TO WLU NDB

**NOTES**

CATEGORY	A	B	C	D
S-I NDB	2250 (624-3.5)			NOT APPLICABLE
CIRCLING	2290 (638-2.4)	2450 (798-4.0)		
ALTERNATE	(1138-4.4)	(1298-6.0)		

1. MAX IAS:  
INITIAL :  
CAT C : 210KT.
2. AWIS (PHONE):  
08 6216 2641

Changes: AD ELEV, THR ELEV, INBD TR, NOTE 1.

WLUNB01-178