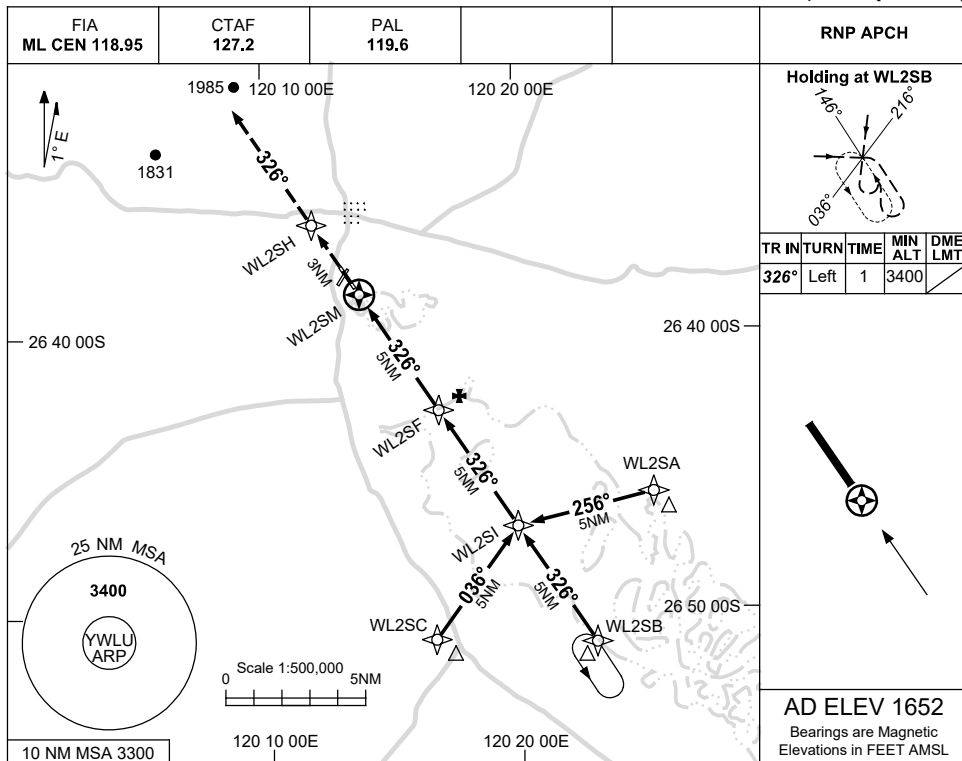


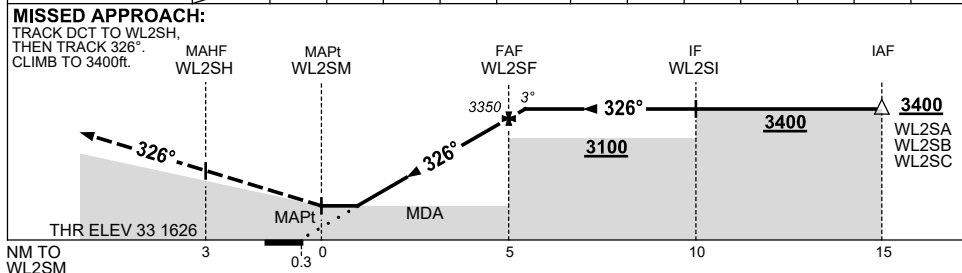
USE QNH

RNP RWY 33  
WILUNA, WA (YWLU)

21 MAR 2024



NM TO NEXT WPT	WL2SM	1.5	2	3	4	WL2SF	0.1				
ALT (3° APCH PATH)		2250	2400	2720	3040	3350	3400				



**NOTES**

CATEGORY	A	B	C	D
LNAV	2250 (624-3.5)			NOT APPLICABLE
CIRCLING	2290 (638-2.4)		2450 (798-4.0)	
ALTERNATE	(1138-4.4)		(1298-6.0)	

1. MAX IAS: INITIAL : 210KT.
2. AWIS (PHONE): 08 6216 2641

Changes: AD ELEV, THR ELEV, WPT NAMING CONVENTION, Editorial.

WLUGN02-178