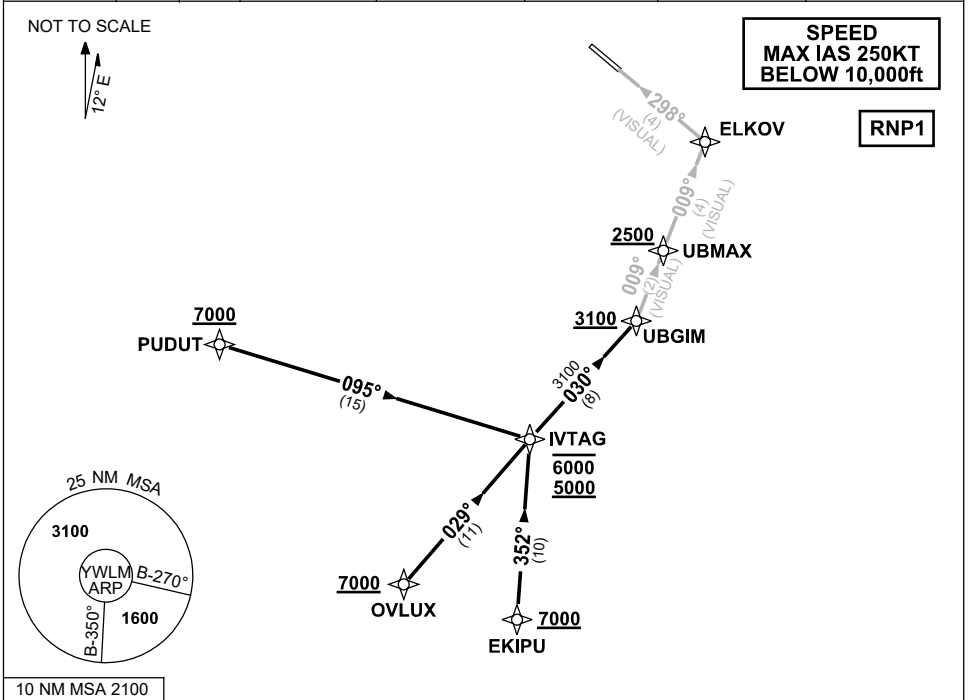


**STANDARD ARRIVAL ROUTE (STAR)  
 IVTAG ONE VICTOR (RNAV) RWY 30  
 WILLIAMTOWN, NSW (YWLM)**

13 JUN 2024

ATIS 134.45 316.1 365	ACD 130.35	SMC 121.8	TWR 118.3 280.9 243.0	APP H 133.3 261.4 L 135.7 293.4	FIA (AH) BN CEN 125.7	CTAF+AFRU (AH) AFRU+PAL (AH) 118.3	BRG are MAG ELEV in FEET AMSL
-----------------------------	---------------	--------------	-----------------------------	---------------------------------------	--------------------------	--	----------------------------------



**TRANSITIONS:**

- PUDUT:**  
 • **Cross** PUDUT AT or ABV 7000ft  
 • From PUDUT track 095° to IVTAG
- OVLUX:**  
 • **Cross** OVLUX AT or ABV 7000ft  
 • From OVLUX track 029° to IVTAG
- EKIPU:**  
 • **Cross** EKIPU AT or ABV 7000ft  
 • From EKIPU track 352° to IVTAG

**ARRIVAL: IVTAG ONE VICTOR RWY 30**

- Cross** IVTAG BTN 5000ft and 6000ft
- From IVTAG track 030° to UBGIM
  - **Cross** UBGIM AT or ABV 3100ft
  - Turn LEFT, track 009° VISUAL to UBMAX
  - **Cross** UBMAX AT or ABV 2500ft
  - Track 009° to ELKOV for 4NM VISUAL final.

**THEN FOLLOW ARRIVAL INSTRUCTION**

**COMMUNICATIONS FAILURE: PROCEDURE IN IMC**

- Squawk 7600, comply with vertical navigation requirements, but not below MSA.
- Track via the latest STAR clearance to the nominated runway, then fly the most suitable approach in accordance with ERS A EMERG Section 1.5.