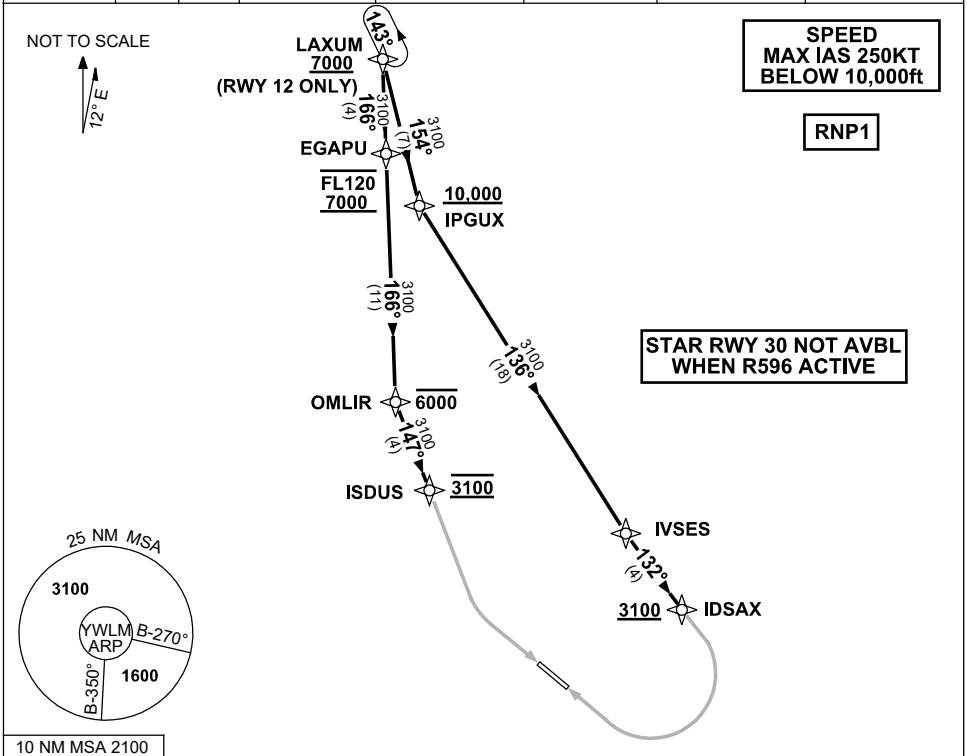


**STANDARD ARRIVAL ROUTE (STAR)
LAXUM TWO ROMEO ARRIVAL (RNAV) RWY 12/30
WILLIAMTOWN, NSW (YWLM)**

13 JUN 2024

| | | | | | | | |
|-----------------------------|---------------|--------------|-----------------------------|---------------------------------------|--------------------------|--|----------------------------------|
| ATIS 134.45 316.1 365 | ACD 130.35 | SMC 121.8 | TWR 118.3 280.9 243.0 | APP H 133.3 261.4 L 135.7 293.4 | FIA (AH) BN CEN 125.7 | CTAF+AFRU (AH) AFRU+PAL (AH) 118.3 | BRG are MAG ELEV in FEET AMSL |
|-----------------------------|---------------|--------------|-----------------------------|---------------------------------------|--------------------------|--|----------------------------------|



ARRIVAL: LAXUM TWO ROMEO

RWY 12:

- **Cross** LAXUM AT or ABV 7000ft, then
- From LAXUM track 166° to EGAPU
- **Cross** EGAPU BTN 7000ft and FL120
- Track 166° to OMLIR
- **Cross** OMLIR AT or BLW 6000ft
- Turn LEFT, track 147° to ISDUS
- **Cross** ISDUS AT 3100ft
- Track via RNP X RWY 12 (AR)

RWY 30:

- From LAXUM track 154° to IPGUX
- **Cross** IPGUX AT or ABV 10,000ft
- Turn LEFT, track 136° to IVSES
- Turn LEFT, track 132° to IDSAX
- **Cross** IDSAX AT or ABV 3100ft
- Track via RNP X RWY 30 (AR)

COMMUNICATIONS FAILURE: PROCEDURE IN IMC

- Squawk 7600, comply with vertical navigation requirements, but not below MSA.
- Track via the latest STAR clearance to the nominated runway, then fly the most suitable approach in accordance with ERSA EMERG Section 1.5.

Changes: LAXUM, IDSAX ALT RQMNTS, VALIDITY NR.

WLMSR08-179