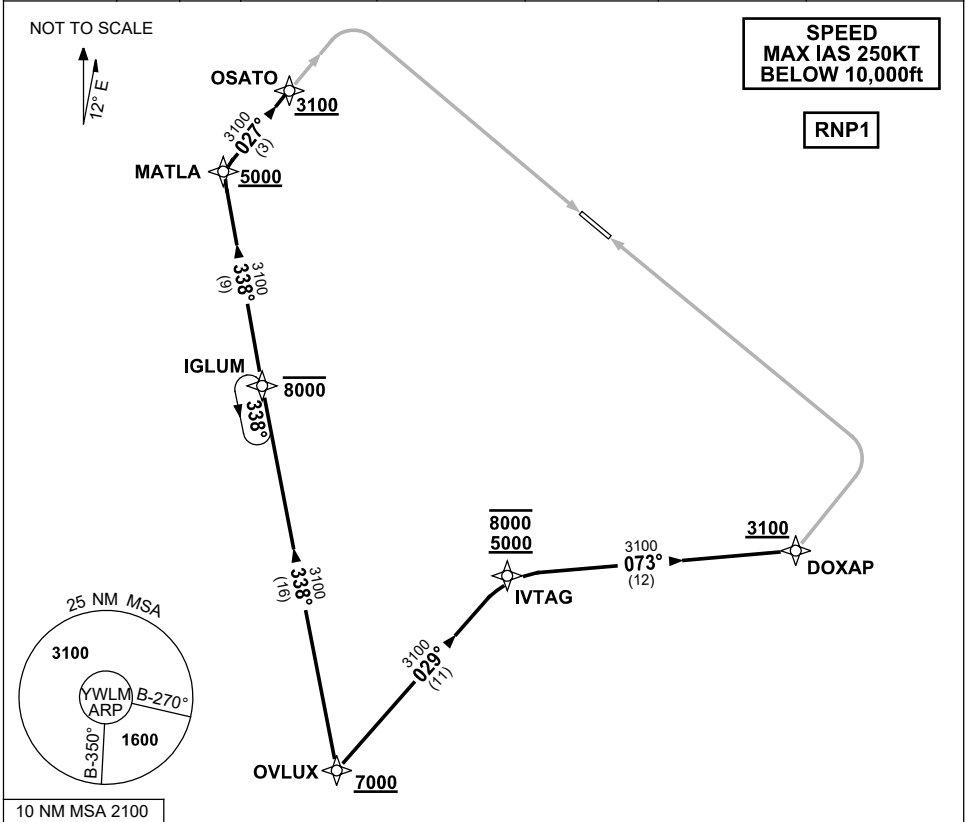


**STANDARD ARRIVAL ROUTE (STAR)
OVLUX TWO ARRIVAL (RNAV) RWY 12/30
WILLIAMTOWN, NSW (YWLM)**

13 JUN 2024

ATIS 134.45 316.1 365	ACD 130.35	SMC 121.8	TWR 118.3 280.9 243.0	APP H 133.3 261.4 L 135.7 293.4	FIA (AH) BN CEN 125.7	CTAF+AFRU (AH) AFRU+PAL (AH) 118.3	BRG are MAG ELEV in FEET AMSL
-----------------------------	---------------	--------------	-----------------------------	---------------------------------------	--------------------------	--	----------------------------------



ARRIVAL: OVLUX TWO

Cross OVLUX AT or ABV 7000ft, then

RWY 12:

- From OVLUX track 338° to IGLUM
Cross IGLUM AT or BLW 8000ft
- Track 338° to MATLA
Cross MATLA AT or ABV 5000ft
- Turn RIGHT, track 027° to OSATO
Cross OSATO AT or ABV 3100ft
- Track via ILS Z RWY 12 or
RNP Z RWY 12 or LOC Z RWY 12

RWY 30:

- From OVLUX track 029° to IVTAG
Cross IVTAG BTN 5000ft and 8000ft
- Turn RIGHT, track 073° to DOXAP
Cross DOXAP AT or ABV 3100ft
- Track via RNP Z RWY 30

COMMUNICATIONS FAILURE: PROCEDURE IN IMC

- Squawk 7600, comply with vertical navigation requirements, but not below MSA.
- Track via the latest STAR clearance to the nominated runway, then fly the most suitable approach in accordance with ERSA EMERG Section 1.5.

Changes: OVLUX ALT, VALIDITY NR.

WLMSR05-179