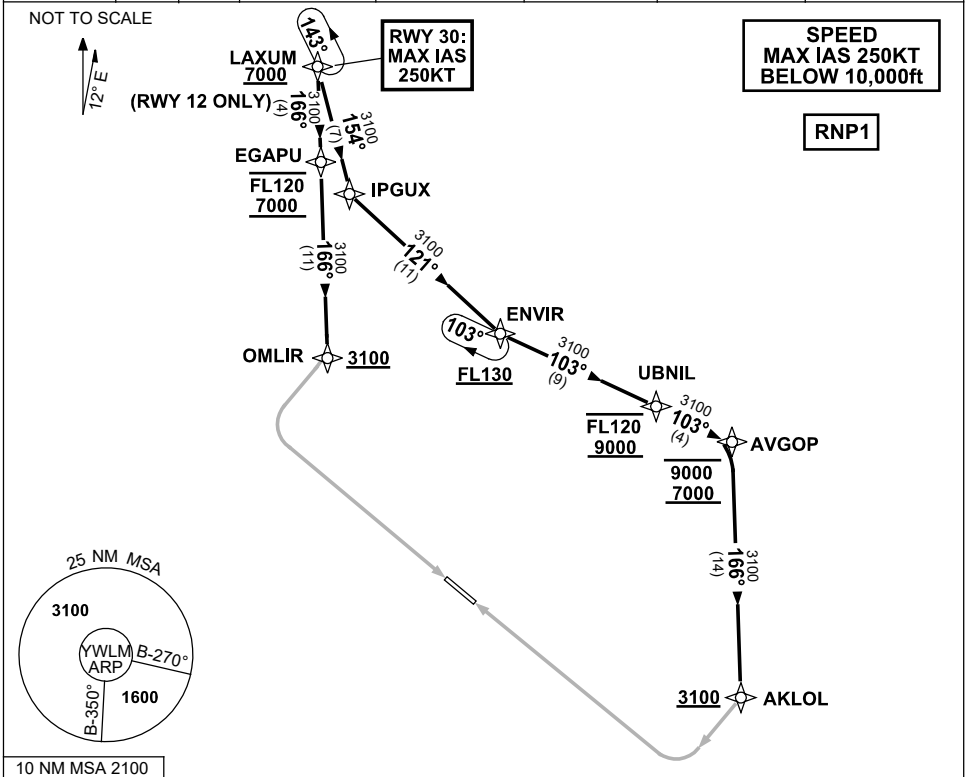


**STANDARD ARRIVAL ROUTE (STAR)  
LAXUM TWO ALPHA ARRIVAL (RNAV) RWY 12/30  
WILLIAMTOWN, NSW (YWLM)**

**13 JUN 2024**

ATIS 134.45 316.1 365	ACD 130.35	SMC 121.8	TWR 118.3 280.9 243.0	APP H 133.3 261.4 L 135.7 293.4	FIA (AH) BN CEN 125.7	CTAF+AFRU (AH) AFRU+PAL (AH) 118.3	BRG are MAG ELEV in FEET AMSL
-----------------------------	---------------	--------------	-----------------------------	---------------------------------------	--------------------------	--	----------------------------------



**ARRIVAL: LAXUM TWO ALPHA**

**RWY 12:**

- **Cross** LAXUM AT or ABV 7000ft, then
- From LAXUM track 166° to EGAPU
- **Cross** EGAPU BTN 7000ft and FL120
- Track 166° to OMLIR
- **Cross** OMLIR AT or ABV 3100ft
- Track via ILS Z RWY 12 or RNP Z RWY 12 or LOC Z RWY 12

**RWY 30:**

- MAX IAS 250KT from LAXUM
- From LAXUM, track 154° to IPGUX
- Turn LEFT, track 121° to ENVIR
- **Cross** ENVIR AT or ABV FL130
- Turn LEFT, track 103° to UBNIL
- **Cross** UBNIL BTN 9000FT and FL120
- Track 103° to AVGOP
- **Cross** AVGOP BTN 7000ft and 9000ft
- Turn RIGHT, track 166° to AKLLOL
- **Cross** AKLLOL AT or ABV 3100ft
- Track via RNP Z RWY 30

**COMMUNICATIONS FAILURE: PROCEDURE IN IMC**

- Squawk 7600, comply with vertical navigation requirements, but not below MSA.
- Track via the latest STAR clearance to the nominated runway, then fly the most suitable approach in accordance with ERS A EMERG Section 1.5.

Changes: LAXUM ALT RQMNTS, VALIDITY NR.

WLMSR03-179