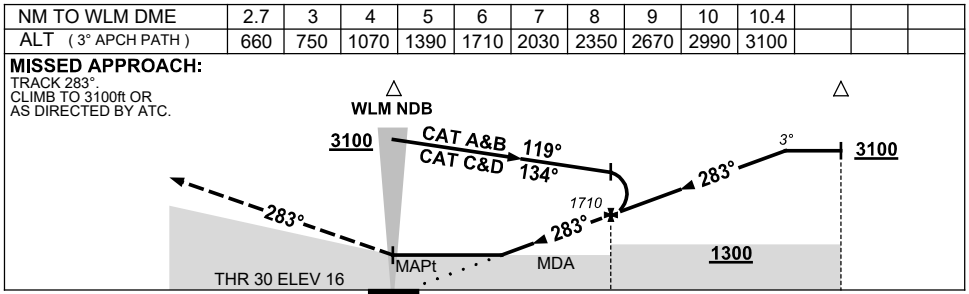
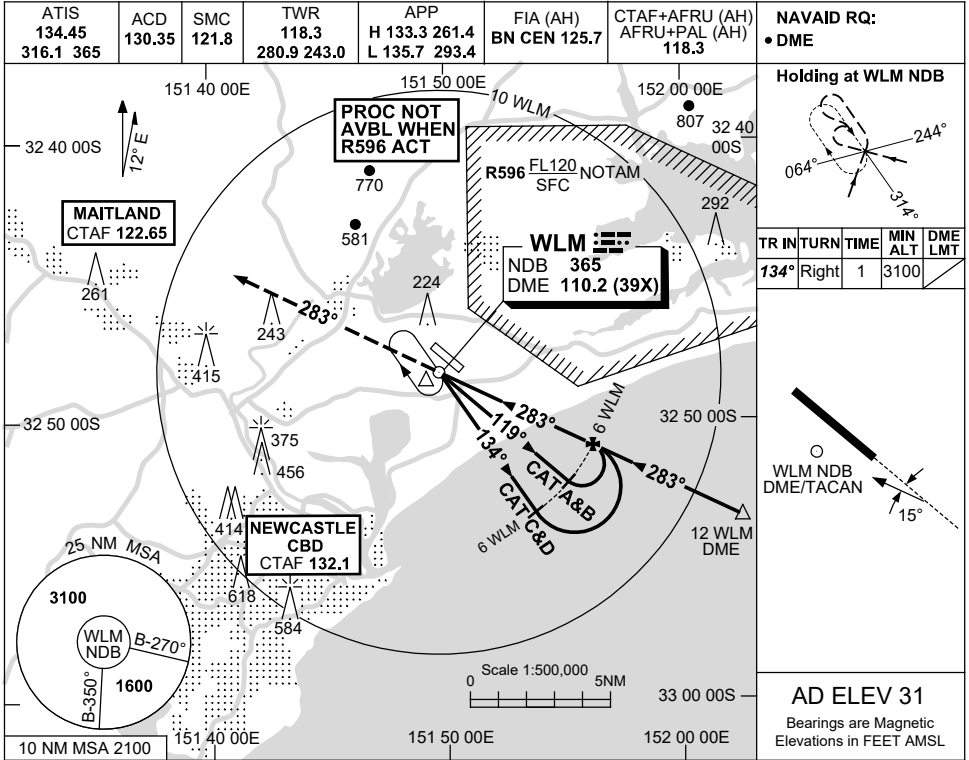


USE QNH

NDB RWY 30

30 NOV 2023

WILLIAMTOWN, NSW (YWLM)



NOTES

CATEGORY	A	B	C	D
S-I NDB/DME	660 (644-3.7)			
CIRCLING	710 (679-2.4)	810 (779-4.0)	1070 (1039-5.0)	
ALTERNATE	(1179-4.4)	(1279-6.0)	(1539-7.0)	

1. MAX IAS: INITIAL : 210KT.
2. ACFT MAY BE RADAR VECTORED TO FAF.
3. **CAUTION:** MAP OVERLAYS MAITLAND RNP W MAP.

Changes: DME ARCS REMOVED, DIST/ALT TABLE, MINIMA, NEW LOGO, Editorial. WLMNB04-177