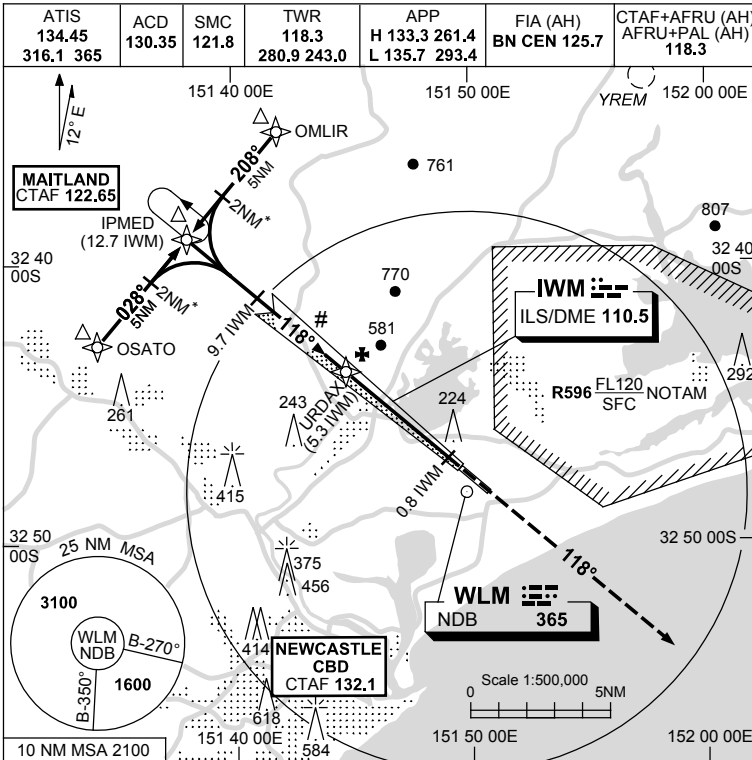


USE QNH

ILS-Z or LOC-Z RWY 12

**WILLIAMTOWN, NSW (YWLM)**

21 MAR 2024



**NAVAID RQ:**

- DME or GNSS (ILS)
- DME (LOC ONLY)
- RNP1

OSATO and OMLIR TRANSITIONS

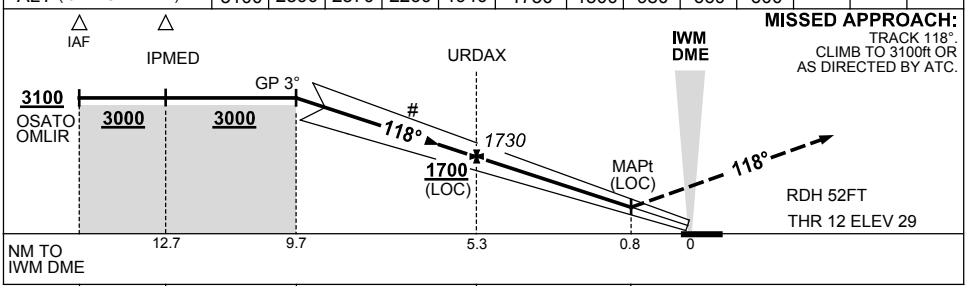
**Holding at IPMED**

TR	IN	TURN	TIME	MIN ALT	DME LMT
118°	Left	1	3100		

WLM NDB DME/TACAN

**AD ELEV 31**  
Bearings are Magnetic Elevations in FEET AMSL

NM TO IWM DME	9.7	9	8	7	6	URDAX	4	3	2	1.8			
ALT (3° APCH PATH)	3100	2890	2570	2260	1940	1730	1300	980	660	600			



NM TO IWM DME	12.7	9.7	5.3	0.8	0
NM TO THR 12	17.5	12.5	9.5	5.2	0.6

- NOTES**
1. MAX IAS: INITIAL :230KT.
  2. ACFT MAY BE RADAR VECTORED TO INTERCEPT FINAL APCH.
  - \* 3. LEAD-IN POINTS FOR GUIDANCE ONLY.

CATEGORY	A	B	C	D
S-I ILS		330 (301) 0.8		
S-I LOC		600 (569-2.3)		
CIRCLING	710 (679-2.4)		810 (779-4.0)	1070 (1039-5.0)
ALTERNATE	(1179-4.4)		(1279-6.0)	(1539-7.0)

Changes: S-I ILS VIS.

WLMII01-178