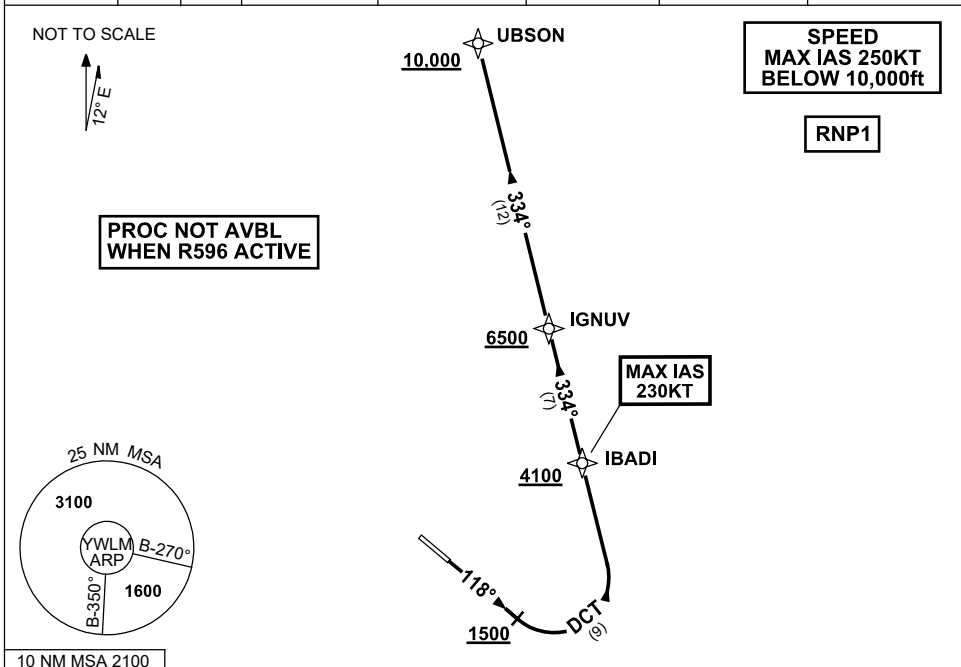


**STANDARD INSTRUMENT DEPARTURES (SID)  
UBSON ONE ALPHA DEPARTURE (RNAV) RWY 12  
WILLIAMTOWN, NSW (YWLM)**

**30 NOV 2023**

ATIS 134.45 316.1 365	ACD 130.35	SMC 121.8	TWR 118.3 280.9 243.0	APP H 133.3 261.4 L 135.7 293.4	FIA (AH) BN CEN 125.7	CTAF+AFRU (AH) AFRU+PAL (AH) 118.3	BRG are MAG ELEV in FEET AMSL
-----------------------------	---------------	--------------	-----------------------------	---------------------------------------	--------------------------	--	----------------------------------



**UBSON ONE ALPHA DEPARTURE**

- RWY 12**  
GRAD 3.3%  
MAX IAS 230KT until IBADI
- Track 118°
  - AT or ABV 1500ft, turn LEFT
  - Track DCT to IBADI
  - **Cross** IBADI AT or ABV 4100ft
  - Track 334° to IGNUV
  - **Cross** IGNUV AT or ABV 6500ft (RQ GRAD TO IGNUV: 5.5%)
  - Track 334° to UBSON
  - **Cross** UBSON AT or ABV 10,000ft

**COMMUNICATIONS FAILURE PROCEDURE**

- On recognition of communication failure:
- Squawk 7600
  - Maintain last assigned vector for two minutes and, if necessary, climb to minimum safe altitude to maintain terrain clearance, then
  - Proceed in accordance with the latest ATC route clearance acknowledged

Changes: NEW PROC.

WLM DP10-177