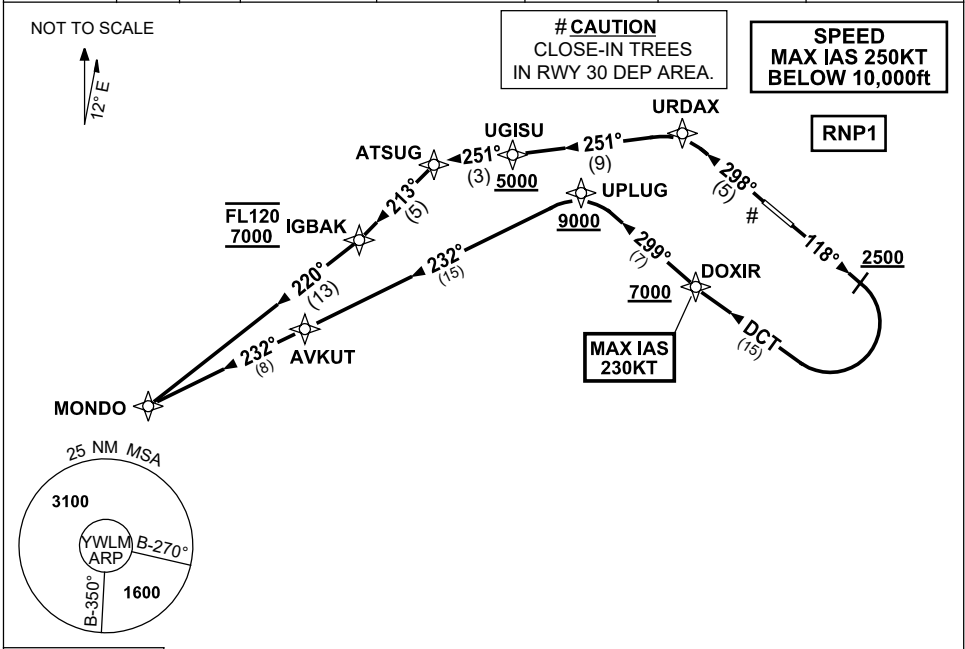


STANDARD INSTRUMENT DEPARTURES (SID)
 MONDO ONE DEPARTURE (RNAV) RWY 12/30
WILLIAMTOWN, NSW (YWLM)

30 NOV 2023

ATIS 134.45 316.1 365	ACD 130.35	SMC 121.8	TWR 118.3 280.9 243.0	APP H 133.3 261.4 L 135.7 293.4	FIA (AH) BN CEN 125.7	CTAF+AFRU (AH) AFRU+PAL (AH) 118.3	BRG are MAG ELEV in FEET AMSL
-----------------------------	---------------	--------------	-----------------------------	---------------------------------------	--------------------------	--	----------------------------------



MONDO ONE DEPARTURE

RWY 12

- GRAD 3.3%
- MAX IAS 230KT until DOXIR
- Track 118°
- AT or ABV 2500ft turn RIGHT
- Track DCT to DOXIR
- Cross** DOXIR AT or ABV 7000ft
- Track 299° to UPLUG
- Cross** UPLUG AT or ABV 9000ft
- (RQ GRAD TO UPLUG: 5.5%)
- Turn LEFT, track 232° to AVKUT
- Track 232° to MONDO

RWY 30

- GRAD 3.8% to 500ft thence 3.3%
- Track 298° to URDAX
- Turn LEFT, track 251° to UGISU
- Cross** UGISU AT or ABV 5000ft
- (RQ GRAD TO UGISU: 6%)
- Track 251° to ATSUG
- Turn LEFT, track 213° to IGBAK
- Cross** IGBAK BTN 7000ft and FL120
- Turn RIGHT, track 220° to MONDO

COMMUNICATIONS FAILURE PROCEDURE

On recognition of communication failure:

- Squawk 7600
- Maintain last assigned vector for two minutes and, if necessary, climb to minimum safe altitude to maintain terrain clearance, then
- Proceed in accordance with the latest ATC route clearance acknowledged

Changes: NEW PROC.

WLM DP08-177