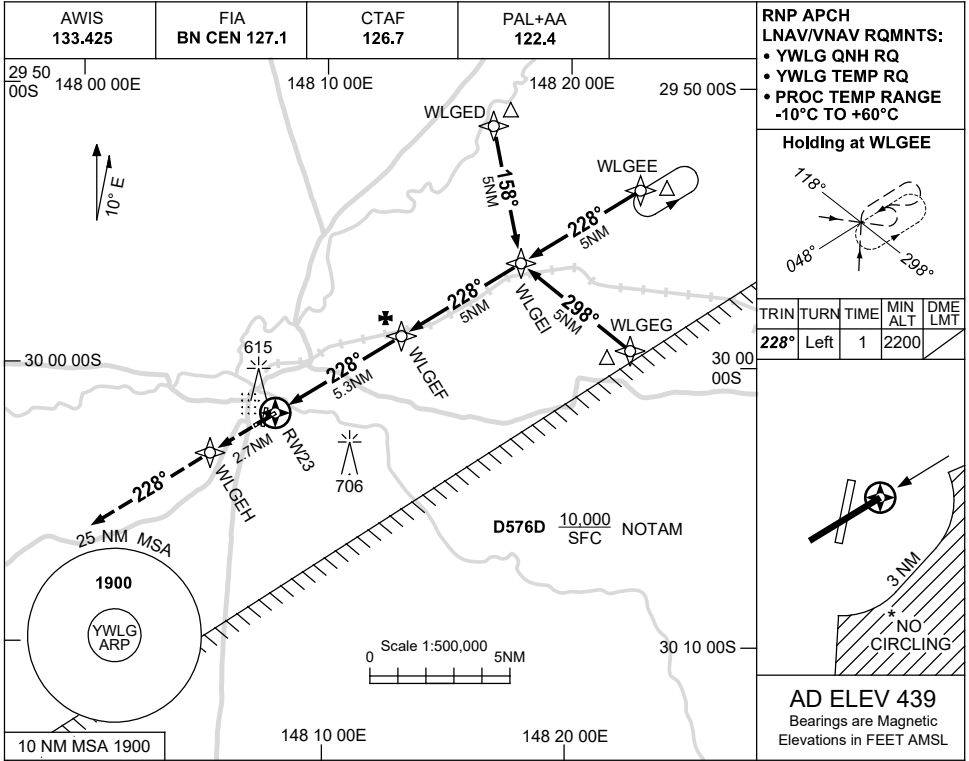


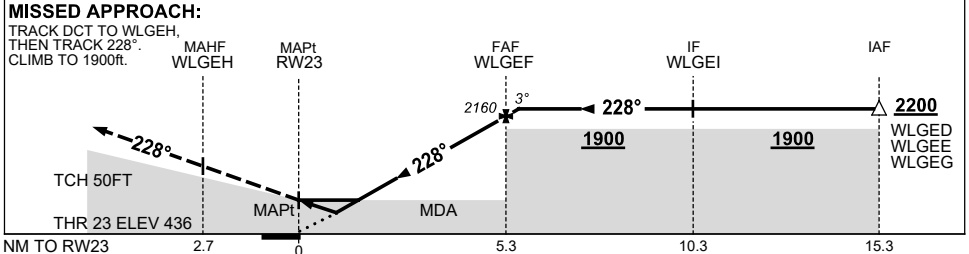
USE QNH

RNP RWY 23
WALGETT, NSW (YWLG)

21 MAR 2024



NM TO NEXT WPT	RW23	0.8	1	1.4	2	3	4	5	WLGEI	0.1		
ALT (3° APCH PATH)		750	800	940	1120	1440	1760	2080	2160	2200		



CATEGORY	A	B	C	D
LNAV/VNAV		750 (314-1.7)		NOT APPLICABLE
LNAV		940 (501-2.8)		
CIRCLING*	1040 (601-2.4)		1130 (691-4.0)	
ALTERNATE		(1101-4.4)	(1191-6.0)	

- NOTES**
- MAX IAS:
INITIAL : 210KT.
 - NO CIRCLING IN SECTOR SOUTH-EAST OF RWY 23 & RWY 36 BEYOND 3 NM.

Changes: D576D ADDED, Editorial.

WLGGN02-178