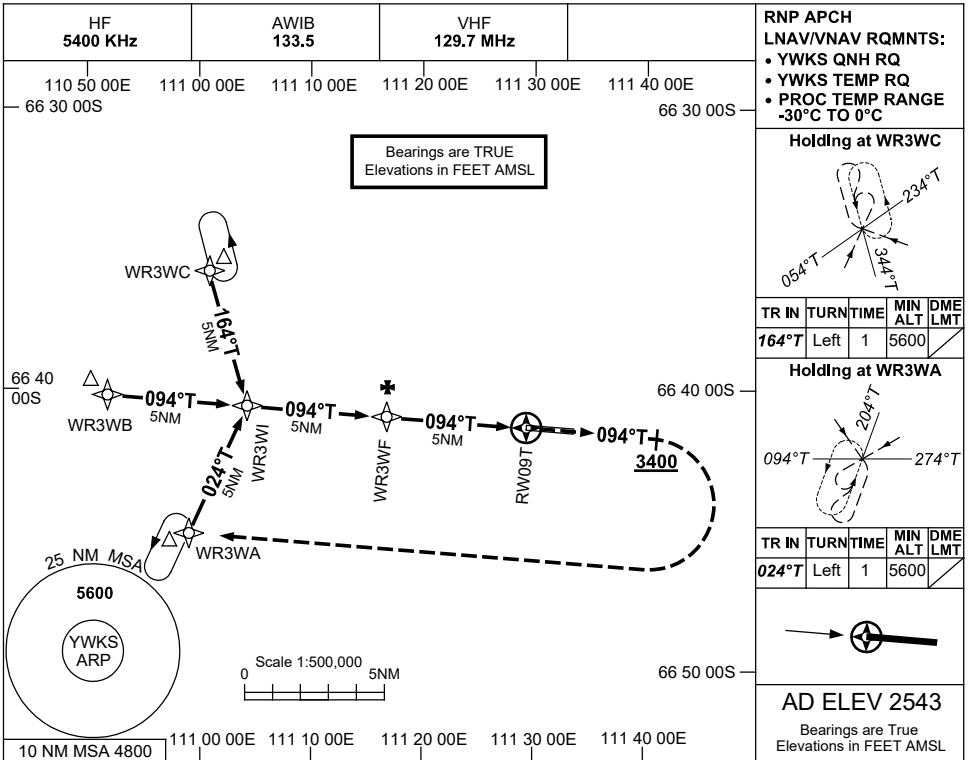


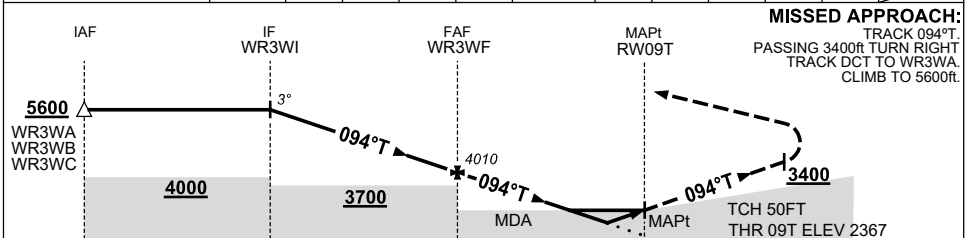
USE QNH WILKINS RUNWAY, ANTARCTICA (YWKS)

RNP RWY 09T

21 MAR 2024



NM TO NEXT WPT	WR3WI	4	3	2	1	WR3WF	4	3	2	1.2	0.7	RW09T
ALT (3° APCH PATH)	5600	5280	4960	4650	4330	4010	3690	3370	3050	2810	2630	



NOTES

1. MAX IAS:
INITIAL : 210KT.
2. READINGS FROM RADIO & RADAR ALTIMETERS MAY BE ERRATIC OVER ICE & SNOW SURFACES.
3. NO TEMPERATURE CORRECTION RQ FOR INITIAL & INTERMEDIATE MNM SEGMENT ALT AT -30°C AND ABOVE

CATEGORY	A	B	C	D
LNAV/VNAV	2630 (263-1.4)			
LNAV	2810 (443-2.5)			
CIRCLING	3290 (747-2.4)	3550 (1007-4.0)	3650 (1107-5.0)	
ALTERNATE	(1247-4.4)	(1507-6.0)	(1607-7.0)	

Changes: FROM SUP H61/23.

WKSGN01-178