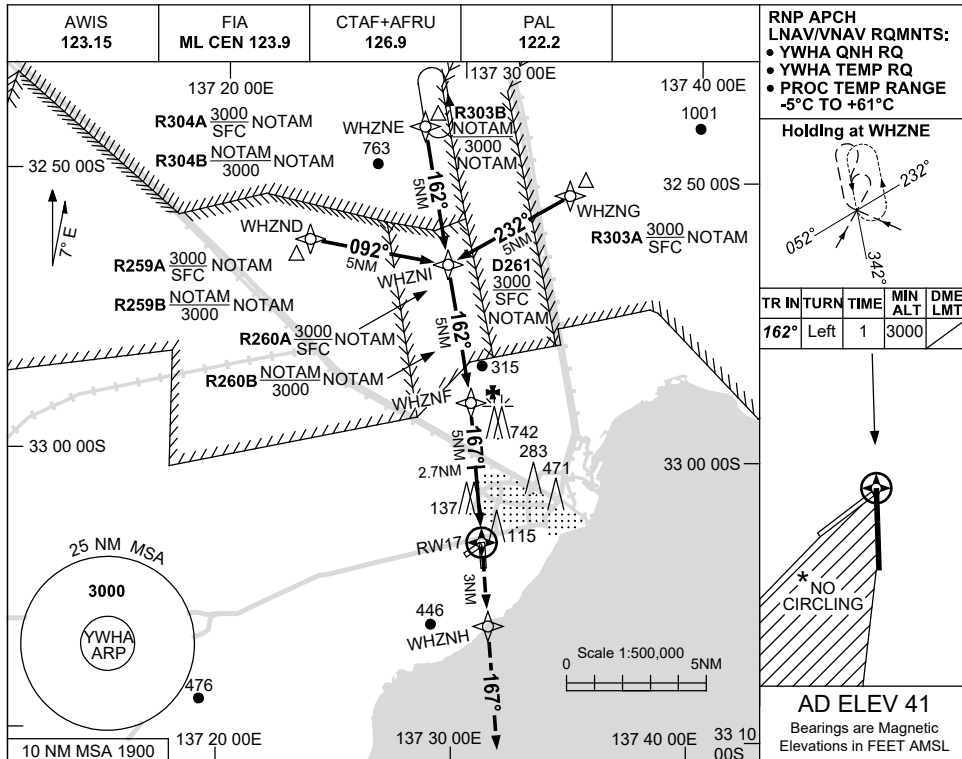


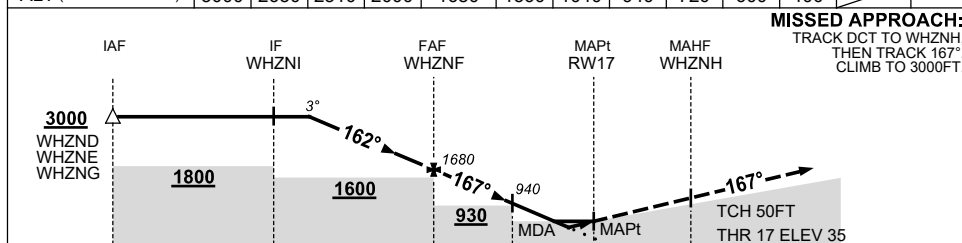
USE QNH

RNP RWY 17
WHYALLA, SA (YWHA)

1 DEC 2022



NM TO NEXT WPT	4.2	3	2	1	WHZNF	4	3	2.7	2	1.6	1	RW17	
ALT (3° APCH PATH)	3000	2630	2310	2000	1680	1360	1040	940	720	600	400		



MISSED APPROACH:
TRACK DCT TO WHZNH,
THEN TRACK 167°.
CLIMB TO 3000FT.

NOTES

- MAX IAS:
HOLDING: 210KT.
INITIAL : 210KT.
- NO CIRCLING IN SECTOR WEST OF RWY 17/35 AND STH OF RWY 05/23.
- CLR RQ WHEN RESTRICTED AREAS ACT.

CATEGORY	A	B	C	D
LNAV/VNAV		400 (365-2.0)		NOT APPLICABLE
LNAV		600 (559-3.2)		
CIRCLING *	710 (669-2.4)		1240 (1199-4.0)	
ALTERNATE	(1169-4.4)		(1699-6.0)	

Changes: CHART TITLE, PBN SPECIFICATION BOX.

WHAGN01-173