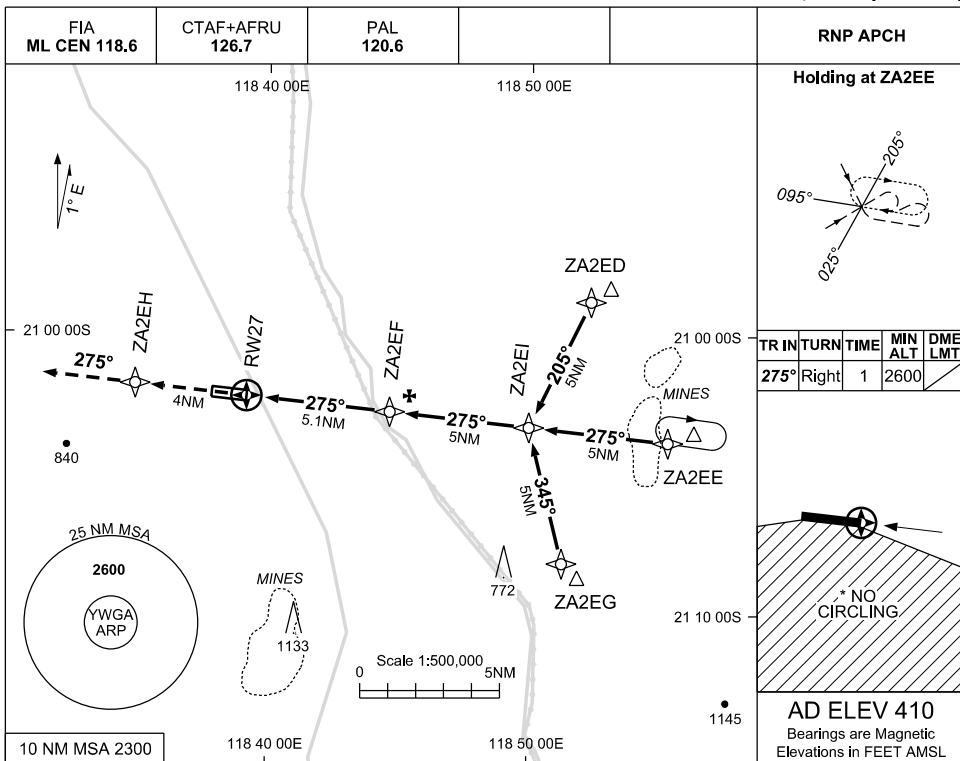


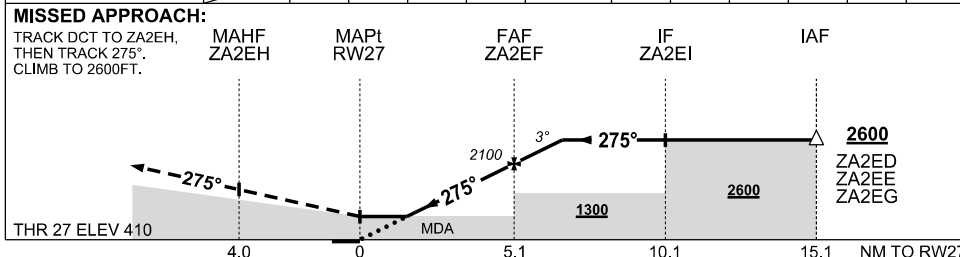
USE QNH PORT HEDLAND / WODGINA, WA (YWGA)

30 NOV 2023

RNP RWY 27



NM TO NEXT WPT	RW27	1.6	2	3	4	ZA2EF	1	1.6				
ALT (3° APCH PATH)		960	1100	1420	1730	2100	2420	2600				



NOTES

1. MAX IAS : INITIAL : 210KT
- *2. NO CIRCLING SOUTH OF RWY 09/27
3. **CAUTION:** BLASTING 15NM E OF RWY 09/27 REFER ERSA

CATEGORY	A	B	C	D
LNAV	960 (550-3.2)			NOT APPLICABLE
CIRCLING *	1010 (600-2.4)		1110 (700-4.0)	
ALTERNATE	(1100-4.4)		(1200-6.0)	

Changes: CHART TITLE, WPT IDENT, EDITORIAL

WGAGN02-177