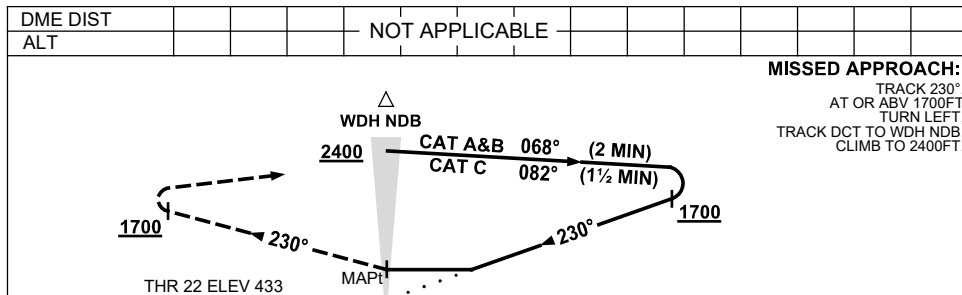
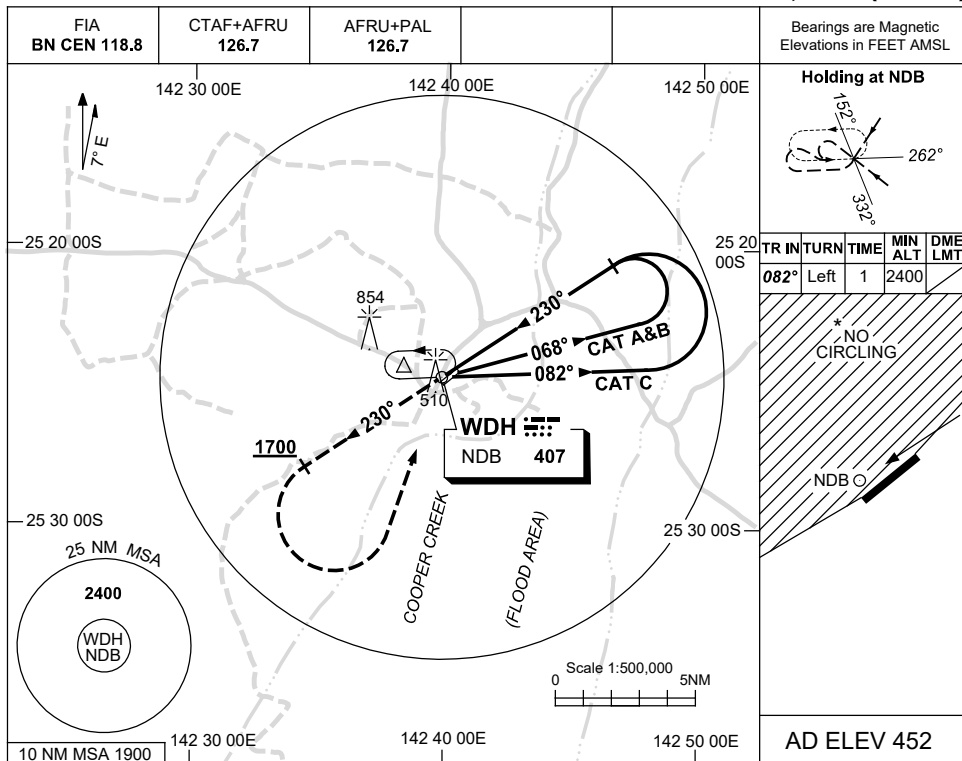


USE QNH

NDB RWY 22  
WINDORAH, QLD (YWDH)

15 JUN 2023



**MISSED APPROACH:**  
TRACK 230° AT OR ABV 1700FT. TURN LEFT. TRACK DCT TO WDH NDB. CLIMB TO 2400FT.

CATEGORY	A	B	C	D
S-I NDB	990 (557-3.2)			NOT APPLICABLE
CIRCLING *	1060 (608-2.4)	1160 (708-4.0)		
ALTERNATE	(1108-4.4)	(1208-6.0)		

**NOTES**  
1. MAX IAS: INITIAL : 210KT.  
\* 2. NO CIRCLING N OF RWY 04/22.

Changes: MAG VAR, Editorial.

WDHNB01-175