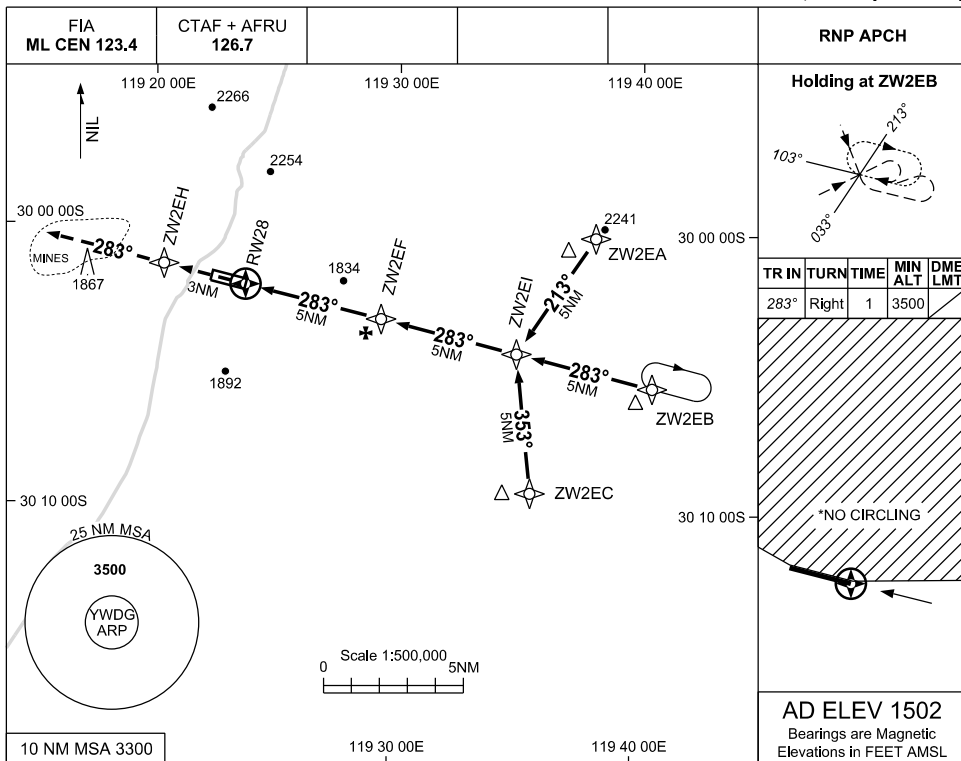


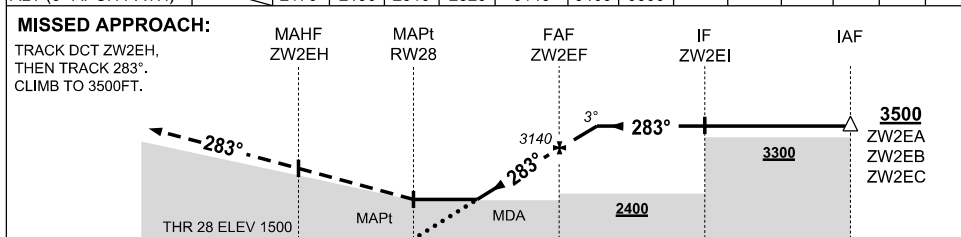
USE QNH

RNP RWY 28
WINDARLING, WA (YWDG)

7 SEP 2023



| NM TO NEXT WPT | RW28 | 1.9 | 2 | 3 | 4 | ZW2EF | 1 | 1.1 | | | | |
|--------------------|------|------|------|------|------|-------|------|-----|--|--|--|--|
| ALT (3° APCH PATH) | 2170 | 2190 | 2510 | 2820 | 3140 | 3460 | 3500 | | | | | |



NOTES

| CATEGORY | A | B | C | D |
|-----------|----------------|---|---------------|----------------|
| LNAV | 2170 (668-3.8) | | | NOT AUTHORISED |
| CIRCLING* | 2170 (668-2.4) | | 2400(898-4.0) | |
| ALTERNATE | (1168-4.4) | | (1398-6.0) | |

- MAX IAS: INITIAL : 210KT
- NO CIRCLING N OF RWY 10/28
- CAUTION:** CHECK BLASTING TIMES WITH AD OPR

Changes: CHART TITLE, PBN SPECIFICATION BOX

WDGGN02-176