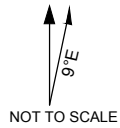


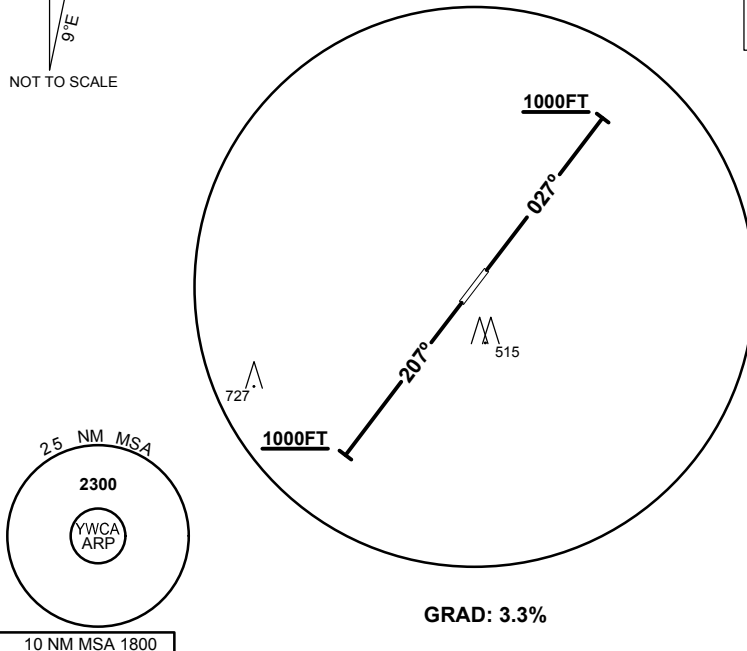
STANDARD INSTRUMENT DEPARTURE
WILCANNIA ONE DEPARTURE
WILCANNIA, NSW (YWCA)

13 AUG 2020

AWIS 133.35	FIA ML CEN 124.9	CTAF 126.7	PAL 119.6	BRG are MAG ELEV in FEET AMSL
----------------	---------------------	---------------	--------------	----------------------------------



SPEED
MAX IAS 250KT
BELOW 10,000FT



WILCANNIA ONE DEPARTURE

RWY 03

- Track 027°
- At or above 1000FT turn as required
- Continue climb to 2300FT
- Intercept flight plan route

RWY 21

- Track 207°
- At or above 1000FT turn as required
- Continue climb to 2300FT
- Intercept flight plan route

NOTES

- NIL -

