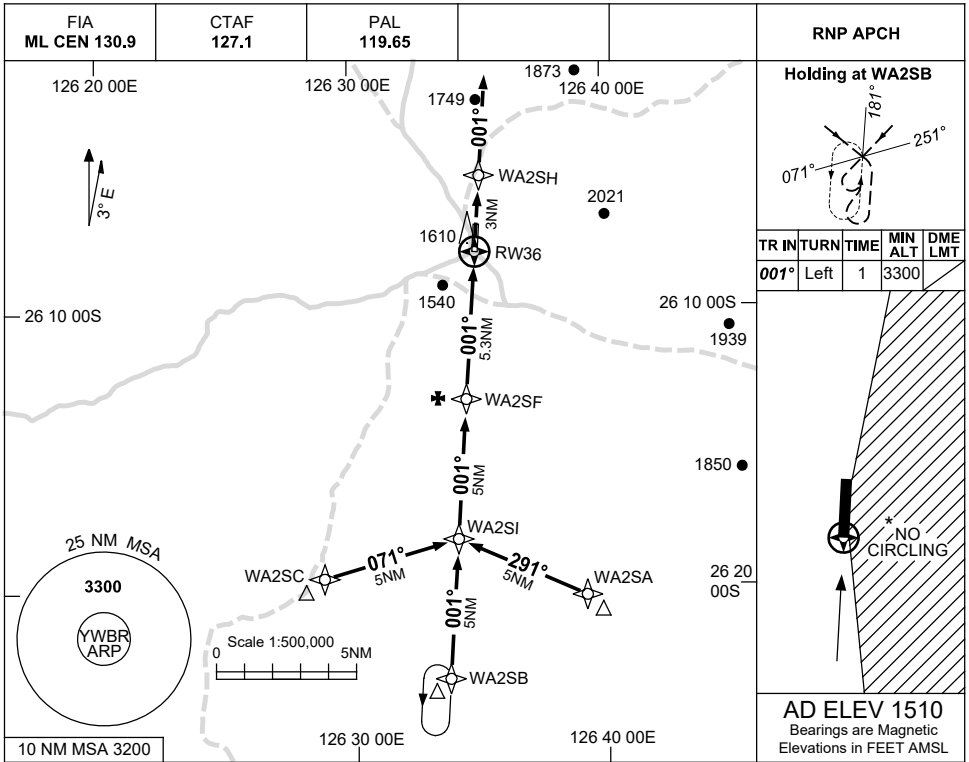


USE QNH

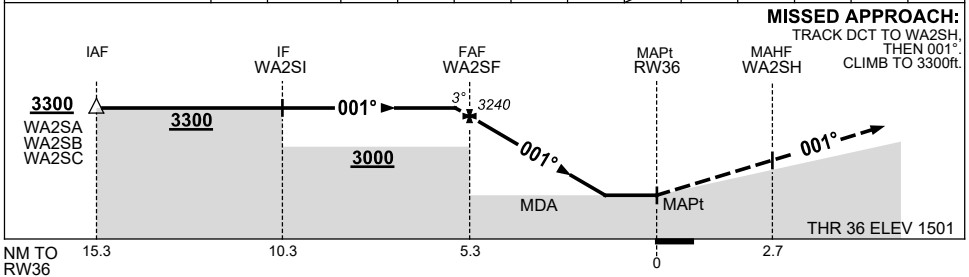
RNP RWY 36

21 MAR 2024

WARBURTON, WA (YWBR)



NM TO NEXT WPT	0.2	WA2SF	5	4	3	2	1.8	RW36					
ALT (3° APCH PATH)	3300	3240	3140	2820	2510	2190	2120						



MISSED APPROACH:
TRACK DCT TO WA2SH,
THEN 001°
CLIMB TO 3300ft.

NOTES

CATEGORY	A	B	C	D
LNAV	2120 (619-3.5)			NOT APPLICABLE
CIRCLING *	2180 (670-2.4)		2400 (890-4.0)	
ALTERNATE	(1170-4.4)		(1390-6.0)	

- MAX IAS:
INITIAL : 210KT.
- * NO CIRCLING EAST OF RWY 18/36.
- AWIS (PHONE)
08 6216 2640

Changes: LNAV, WPT NAMING CONVENTION, CHART TITLE.

WBRGN02-178