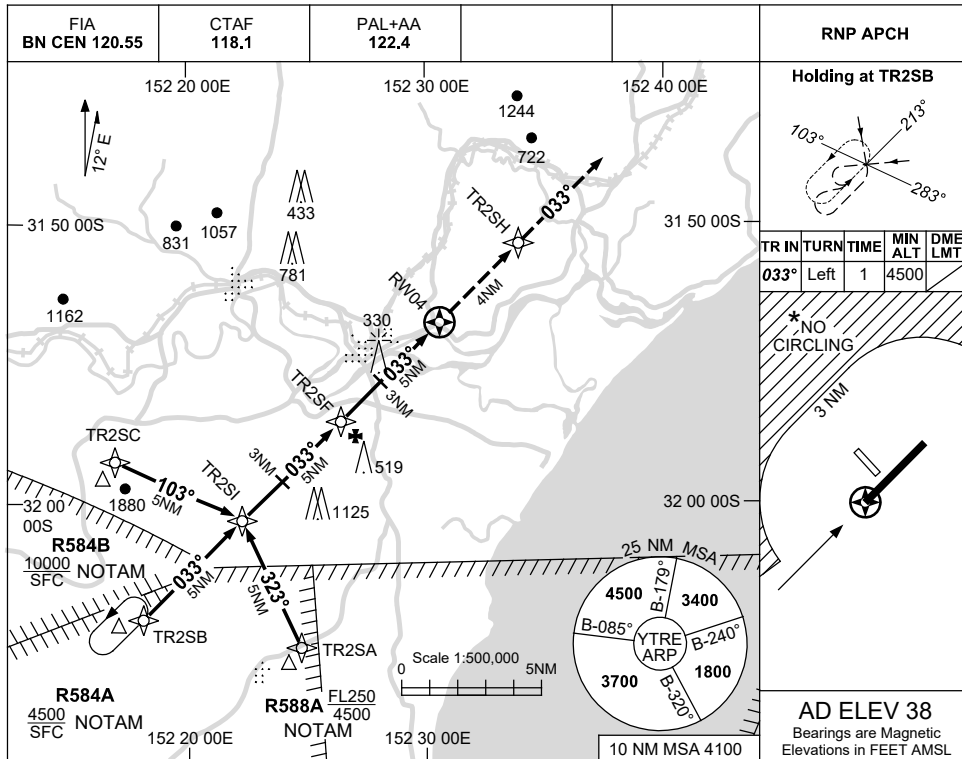


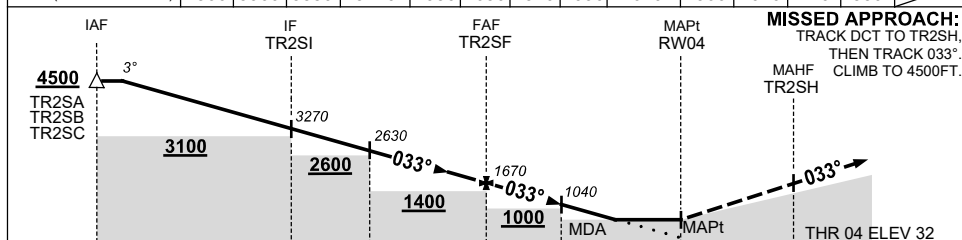
USE QNH

RNP RWY 04
TAREE, NSW (YTRE)

30 NOV 2023



NM TO NEXT WPT	3.9	2	1	TR2SI	4	3	2	1	TR2SF	4	3	2	1.5	RW04
ALT (3° APCH PATH)	4500	3900	3580	3270	2950	2630	2310	1990	1670	1360	1040	720	550	



MISSED APPROACH:
TRACK DCT TO TR2SH,
THEN TRACK 033°.
CLIMB TO 4500FT.

NM TO RW04	15	10	8	5	3	0	4
	IAF	IF TR2SI	FAF TR2SF	MAPt RW04			THR 04 ELEV 32

NOTES

- MAX IAS:
INITIAL : 210KT.
- * NO CIRCLING NW OF RWY 04/22 BEYOND 3NM.
- AWIS (PHONE)
02 9353 6452
- CLR RQ FM WILLY APP (135.7) PRIOR TO COMMENCING APCH WHEN R584A-B AND/OR R588A ACTIVE.

CATEGORY	A	B	C	D
LNAV	550 (512-2.9)			NOT APPLICABLE
CIRCLING *	790 (752-2.4)	890 (852-4.0)		
ALTERNATE	(1252-4.4)	(1352-6.0)		

Changes: R584A-B, R588A, NOTE 4, NEW LOGO.

TREGN04-177