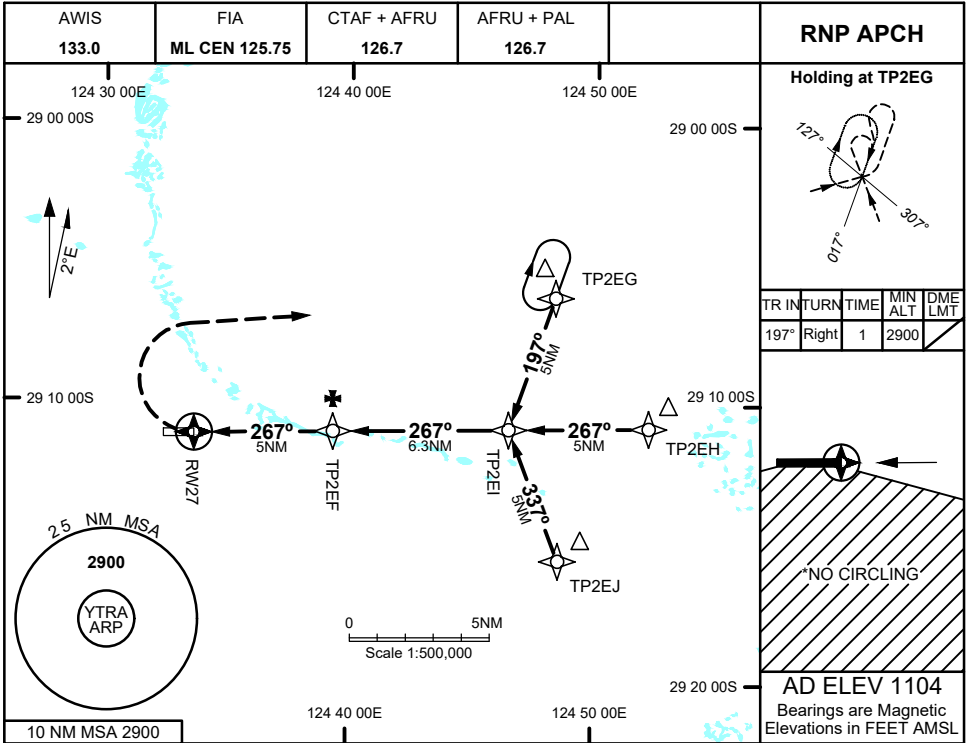
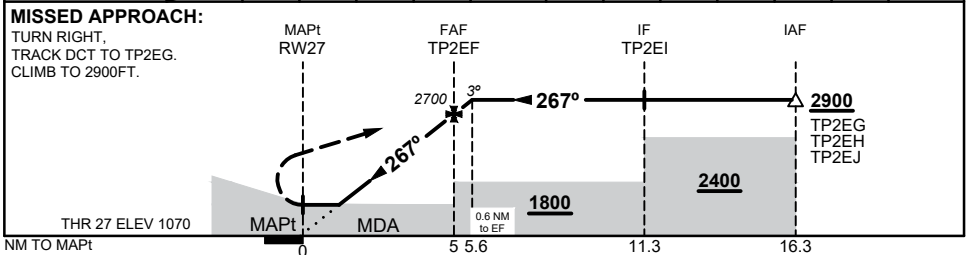


21 MAR 2024



NM TO NEXT WPT	RW27	1.5	2	3	4	TP2EF	0.6				
ALT (3° APCH PATH)		1590	1760	2080	2390	2700	2900				



NOTES

1. MAX IAS:
HOLDING : 210KTS
INITIAL : 210KTS
MAP TURN : 195KTS
- *2. NO CIRCLING SOUTH OF RWY 09/27

CATEGORY	A	B	C	D
LNAV	1590 (520 - 2.9)			
CIRCLING*	1770 (666 - 2.4)		2010 (906 - 4.0) 2030 (926 - 5.0)	
ALTERNATE	(1166 - 4.4)		(1406 - 6.0) (1426 - 7.0)	

Changes: 25 NM MSA, 10 NM MSA, IAF ALT, DIST/ALT TABLE, MISSED APPROACH

TRAGN02-178