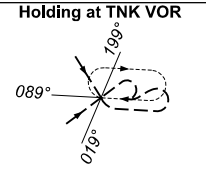
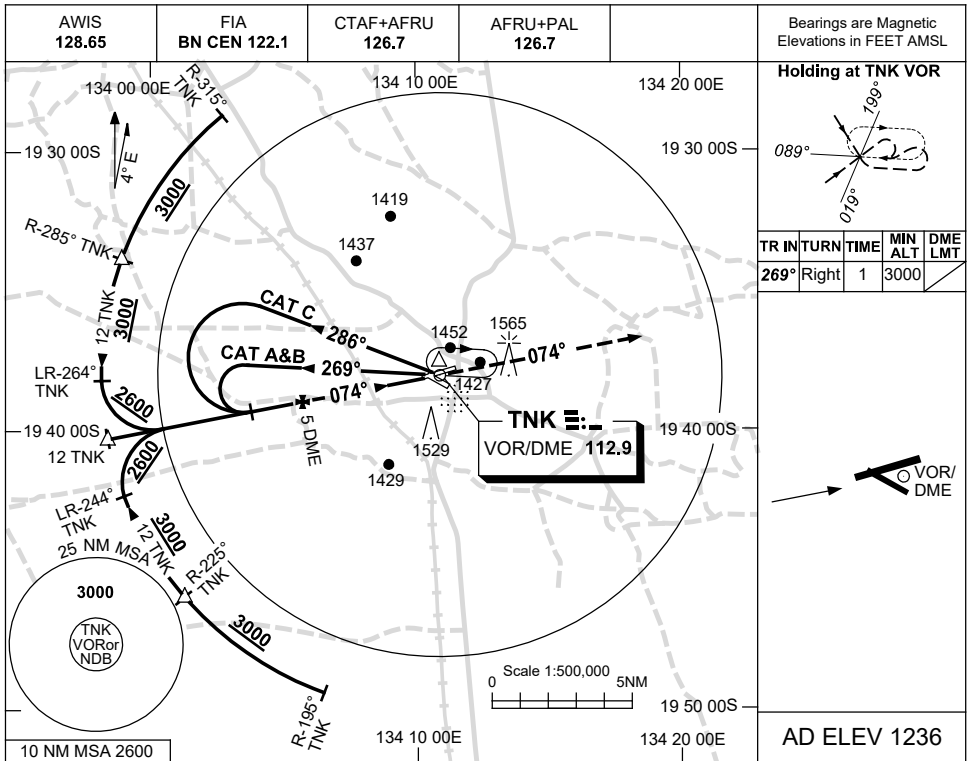


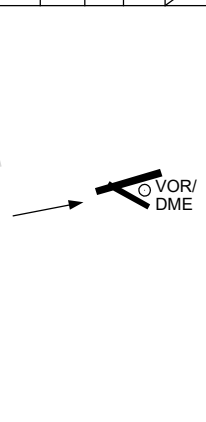
USE QNH

VOR RWY 07
TENNANT CREEK, NT (YTNK)

16 JUN 2022

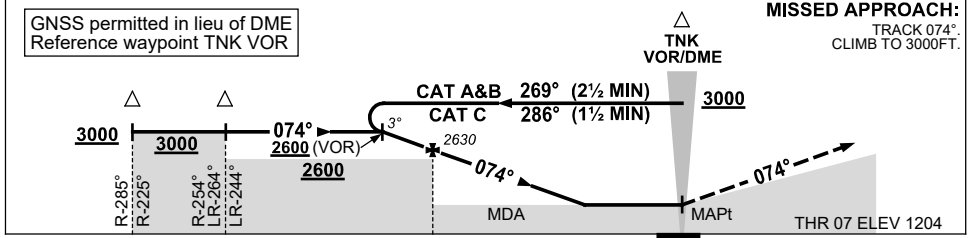


TR	IN	TURN	TIME	MIN	DME
				ALT	LMT
269°	Right		1	3000	



AD ELEV 1236

DIST TO TNNK DME	6.2	6	5	4	3	2.4	2.3				
ALT (3° APCH PATH)	3000	2950	2630	2310	1990	1820	1780				



NM TO TNNK DME: 12, 12, 5, 0

NOTES

- MAX IAS: INITIAL : 210KT.

CATEGORY	A	B	C	D
S-I VOR/DME		1780 (576-3.3)		NOT APPLICABLE
S-I VOR		1820 (616-3.5)		
CIRCLING	1980 (744-2.4)		2080 (844-4.0)	
ALTERNATE	(1244-4.4)		(1344-6.0)	

Changes: MINIMAS, NOTES.

TNNKVO01-171