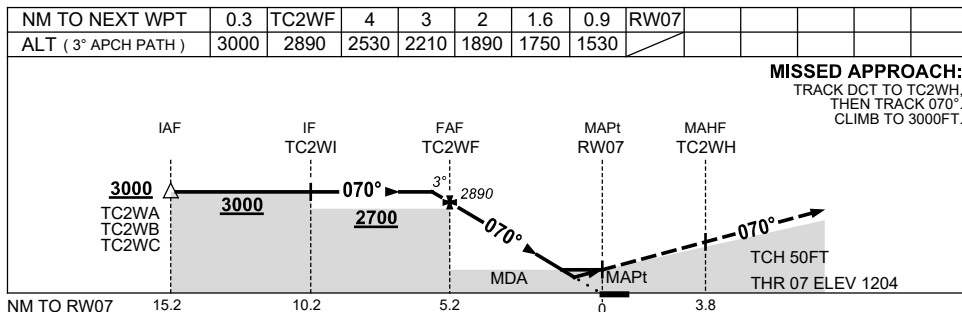
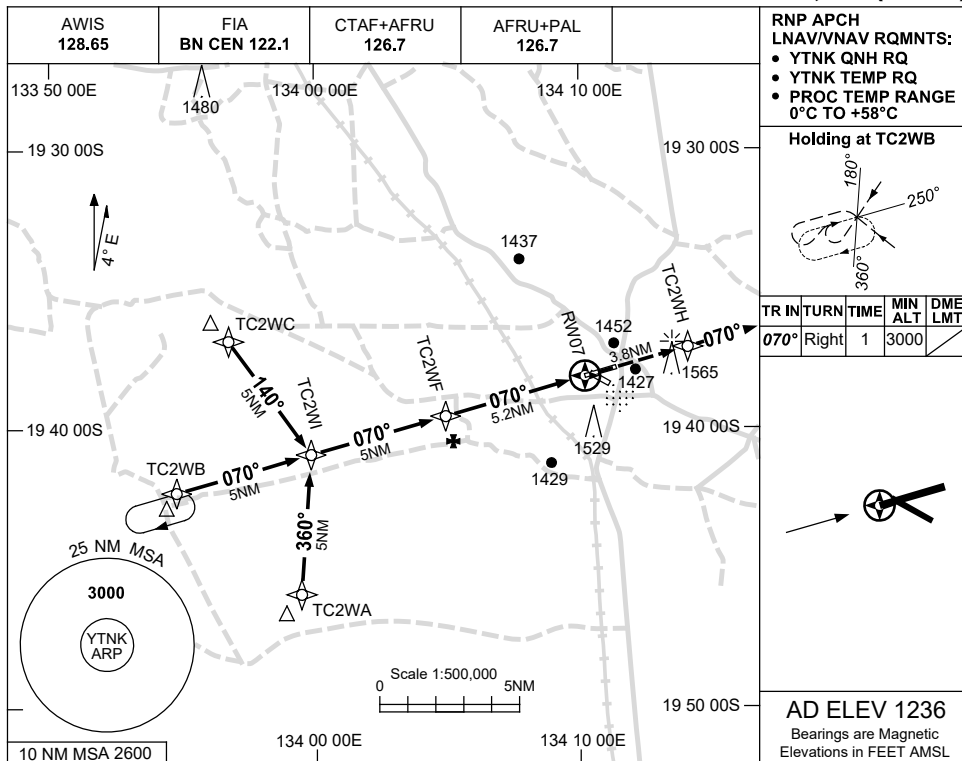


USE QNH

RNP RWY 07

8 SEP 2022

TENNANT CREEK, NT (YTNK)



**NOTES**

CATEGORY	A	B	C	D
LNAV/VNAV		1530 (326-1.8)		NOT APPLICABLE
LNAV		1750 (546-3.1)		
CIRCLING	1980 (744-2.4)		2080 (844-4.0)	
ALTERNATE	(1244-4.4)		(1344-6.0)	

1. MAX IAS:  
INITIAL : 230KT.

Changes: CHART TITLE, PBN SPECIFICATION BOX.

TNKGNO1-172