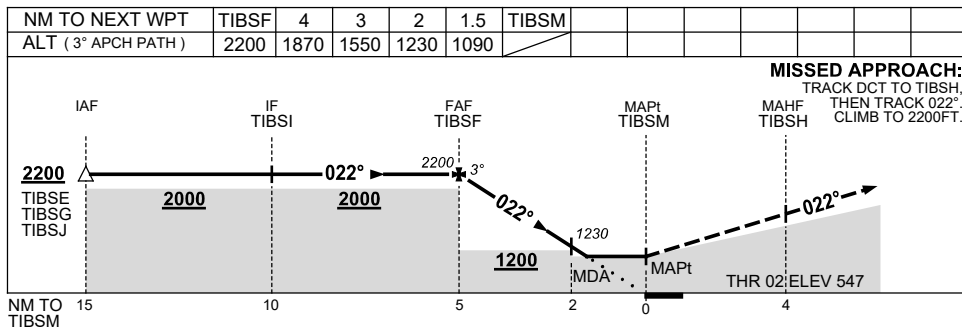
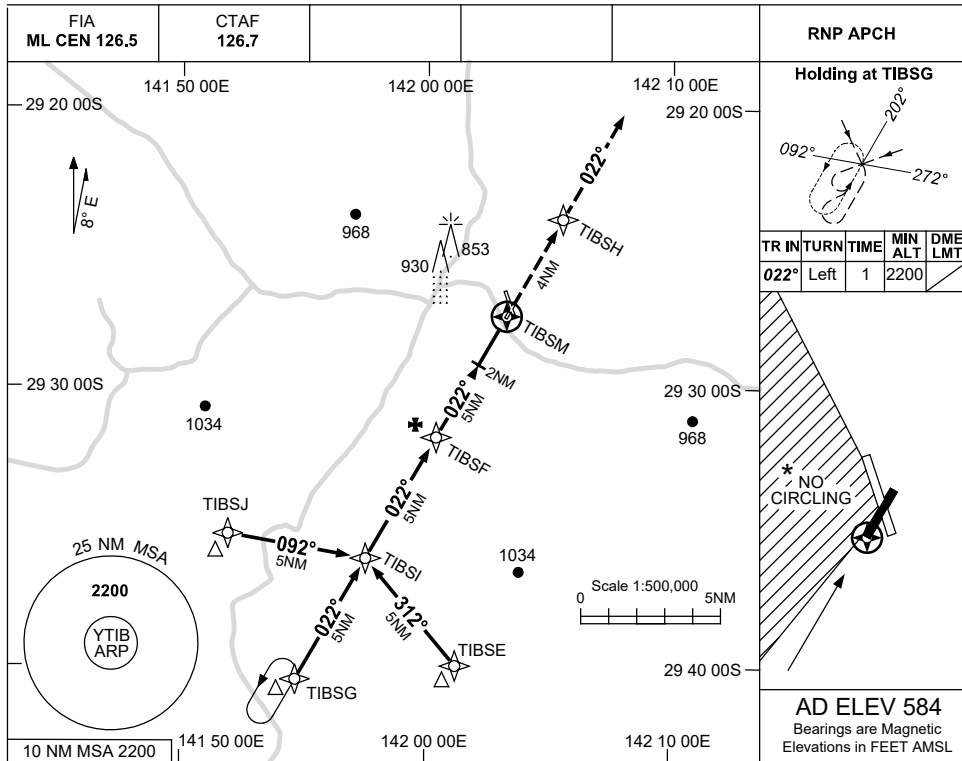


USE QNH

RNP RWY 02

1 DEC 2022

TIBOOBURRA, NSW (YTIB)



CATEGORY	A	B	C	D
LNAV	1090 (543-3.1)			NOT APPLICABLE
CIRCLING *	1190 (606-2.4)		1290 (706-4.0)	
ALTERNATE	(1106-4.4)		(1206-6.0)	

- NOTES**
1. MAX IAS: INITIAL : 210KT.
  - \* 2. NO CIRCLING W/ OF RWY 02 & RWY 15.
  3. AWIS (PHONE) 02 9353 6454

Changes: CHART TITLE, PBN SPECIFICATION BOX.

TIBGN02-173