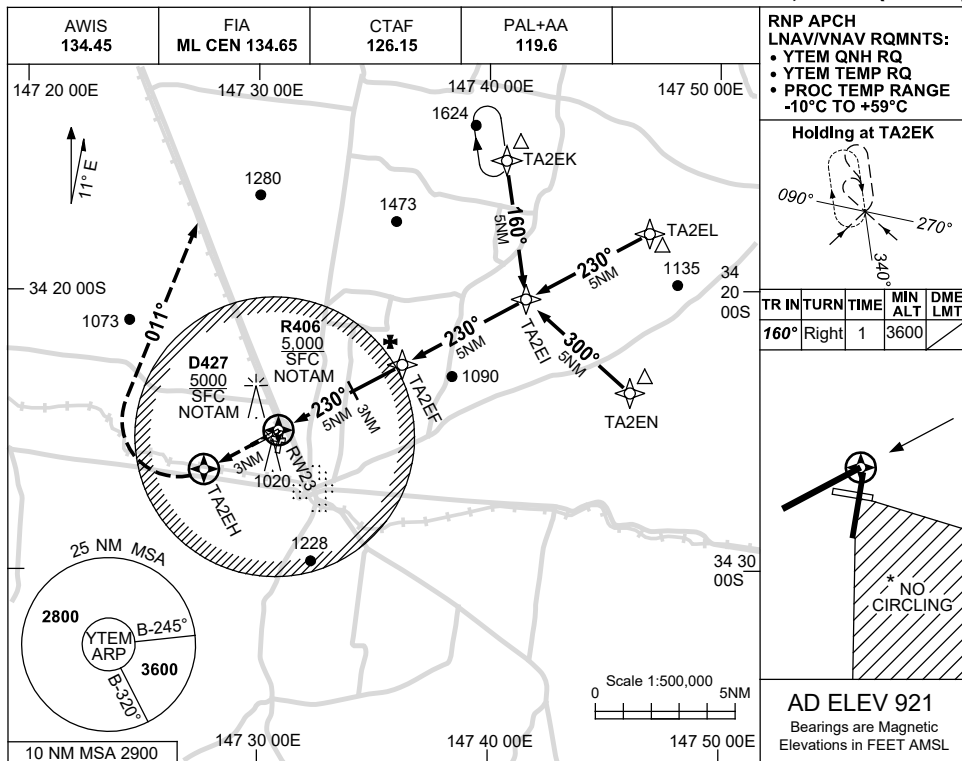


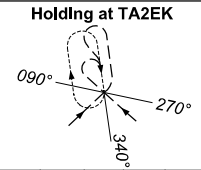
USE QNH

RNP RWY 23
TEMORA, NSW (YTEM)

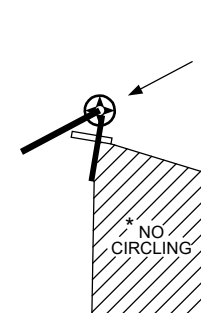
13 JUN 2024



RNP APCH
 LNAV/VNAV RQMTS:
 • YTEM QNH RQ
 • YTEM TEMP RQ
 • PROC TEMP RANGE
 -10°C TO +59°C

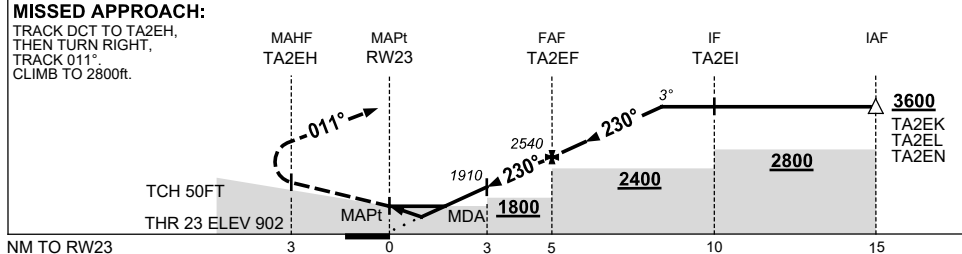


TR IN	TURN	TIME	MIN ALT	DME LMT
160°	Right	1	3600	



AD ELEV 921
 Bearings are Magnetic
 Elevations in FEET AMSL

NM TO NEXT WPT	RW23	1	1.6	2	3	4	TA2EF	1	2	3	3.3		
ALT (3° APCH PATH)		1280	1470	1590	1910	2230	2540	2860	3180	3500	3600		



NOTES

CATEGORY	A	B	C	D
LNAV/VNAV		1280 (378-2.1)		
LNAV		1470 (568-3.2)		
CIRCLING *	1710 (789-2.4)		1810 (889-4.0)	1810 (889-5.0)
ALTERNATE	(1289-4.4)		(1389-6.0)	(1389-7.0)

- MAX IAS:
INITIAL : 210KT.
- * NO CIRCLING IN SECTOR SOUTH EAST OF RWYS 27 & 36.

Changes: HOLDING, Editorial.

TEMGN03-179