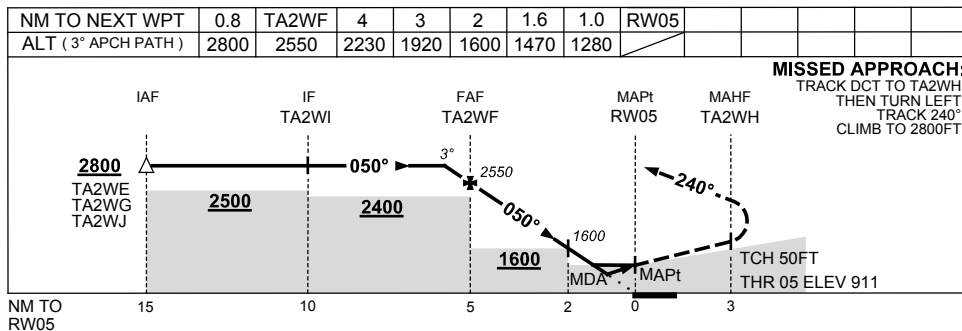
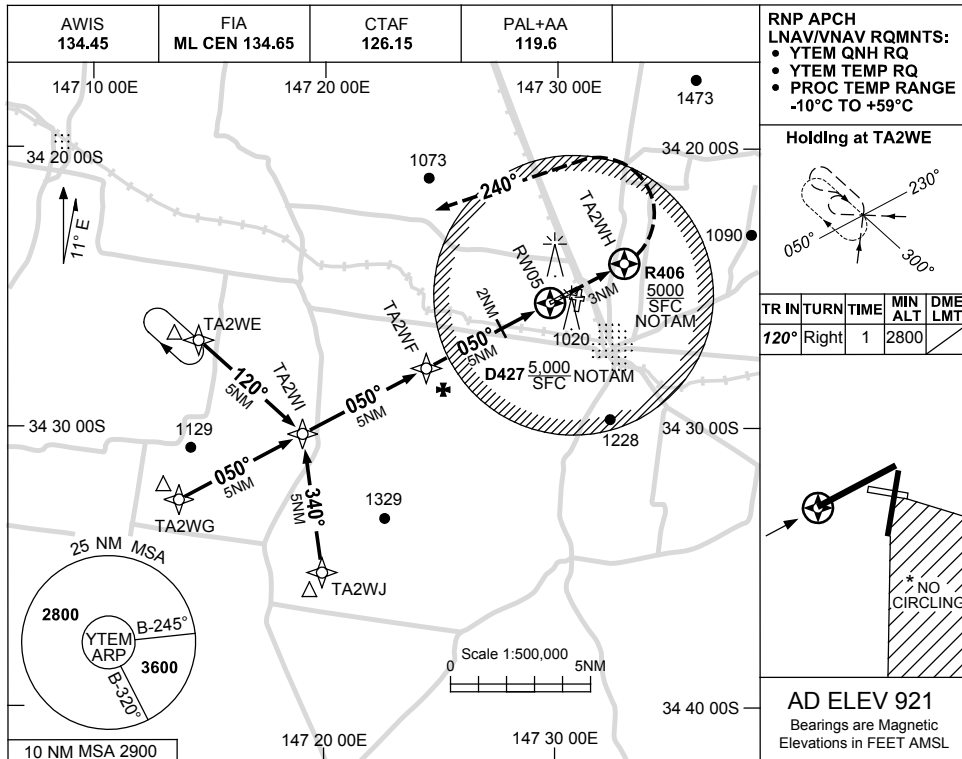


USE QNH

RNP RWY 05

TEMORA, NSW (YTEM)

15 JUN 2023



**NOTES**

CATEGORY	A	B	C	D
LNAV/VNAV	1280 (369-2.1)			
LNAV	1470 (559-3.2)			
CIRCLING *	1710 (789-2.4)	1810 (889-4.0)	1810 (889-5.0)	
ALTERNATE	(1289-4.4)	(1389-6.0)	(1389-7.0)	

1. MAX IAS: INITIAL : 210KT.  
 \* 2. NO CIRCLING IN SECTOR SOUTH EAST OF RWYS 27 & 36.

Changes: SEGMENT MINIMA, CHART TITLE & WPT NAMING CONVENTION, MISSED APCH TRACK.

TEMGN02-175