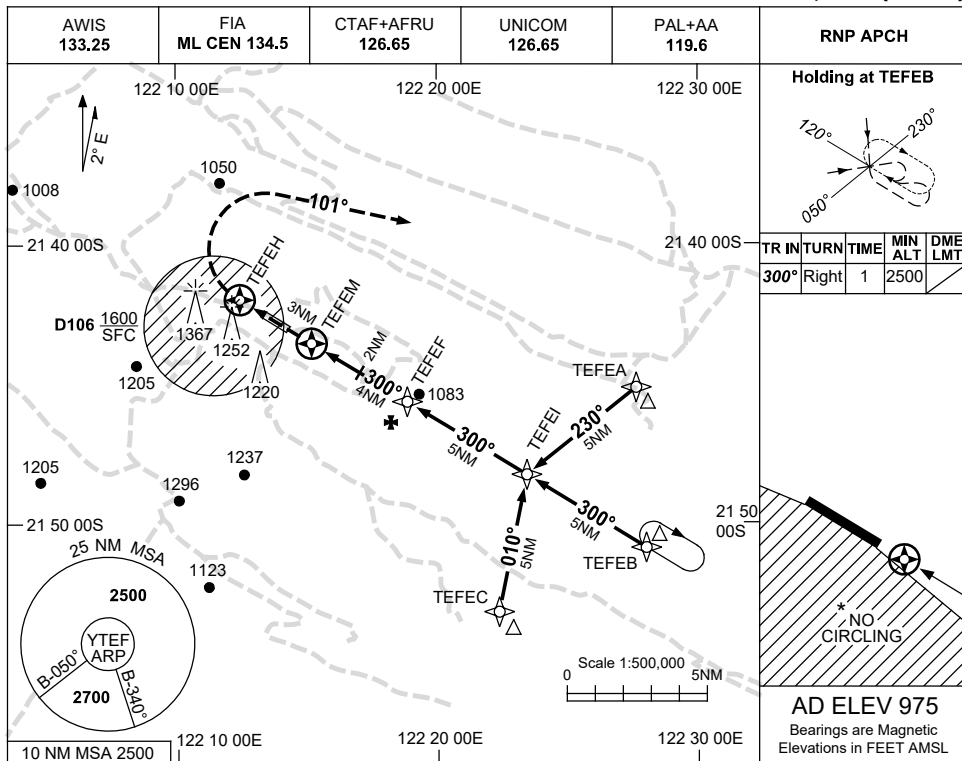


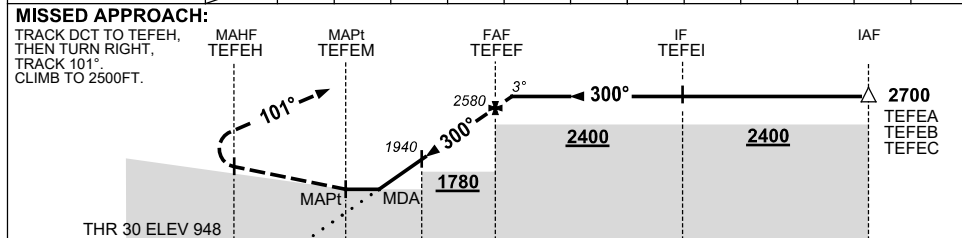
USE QNH

RNP RWY 30  
TELFER, WA (YTEF)

30 NOV 2023



NM TO NEXT WPT	TEFEM	1	2	3	3.8	TEFEB	0.4			
ALT (3° APCH PATH)		1610	1940	2260	2500	2580	2700			



NM TO TEFEM	3	1.0	0	2	4	9	14
-------------	---	-----	---	---	---	---	----

CATEGORY	A	B	C	D
LNAV	1610 (662-3.8)			NOT APPLICABLE
CIRCLING *	1770 (795-2.4)		1870 (895-4.0)	
ALTERNATE	(1295-4.4)		(1395-6.0)	

- NOTES**
- MAX IAS: INITIAL : 210KT.
  - CAUTION:** CHECK WITH UNICOM FOR BLASTING TIMES.
  - \*3. NO CIRCLING SW OF RWY 12/30.

Changes: CHART TITLE, PBN SPECIFICATION BOX, Editorial.

TEFGN02-177