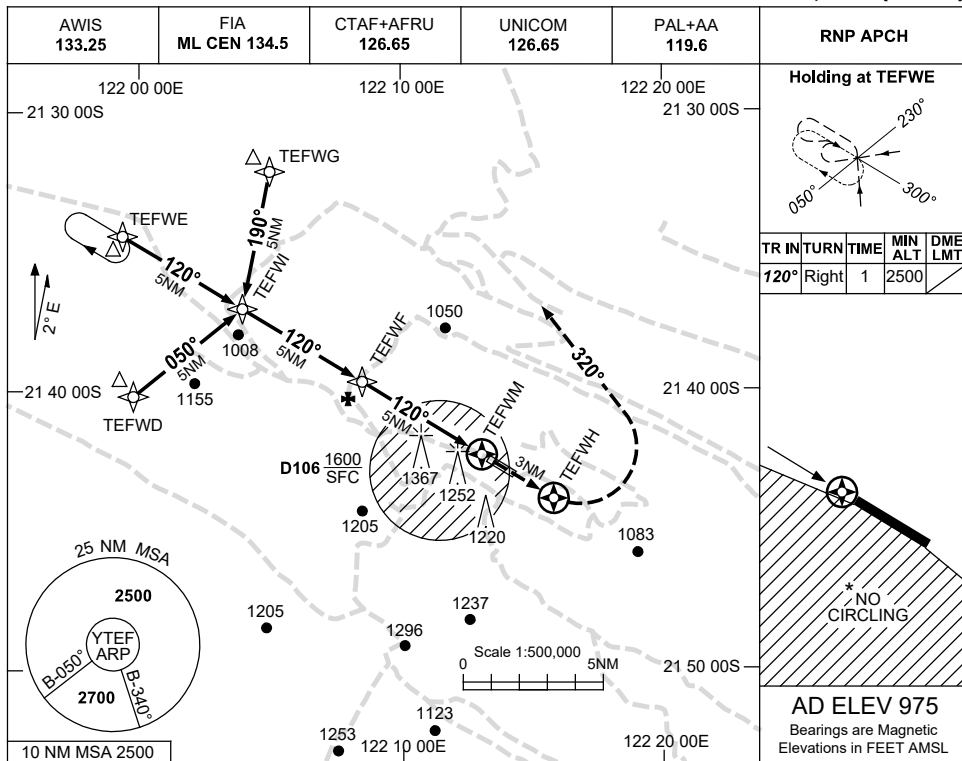


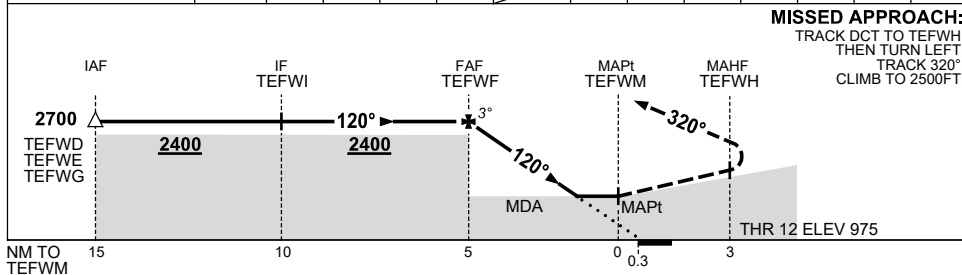
USE QNH

RNP RWY 12  
TELFER, WA (YTEF)

30 NOV 2023



NM TO NEXT WPT	TEFWF	4	3	2	1.6	TEFWM							
ALT (3° APCH PATH)	2700	2380	2070	1750	1610								



**MISSED APPROACH:**  
TRACK DCT TO TEFWH,  
THEN TURN LEFT,  
TRACK 320°,  
CLIMB TO 2500FT.

CATEGORY	A	B	C	D
LNAV	1610 (635-3.6)			NOT APPLICABLE
CIRCLING*	1770 (795-2.4)		1870 (895-4.0)	
ALTERNATE	(1295-4.4)		(1395-6.0)	

- NOTES**
- MAX IAS: INITIAL : 210KT.
  - CAUTION:** CHECK WITH UNICOM FOR BLASTING TIMES.
  - \* NO CIRCLING SW OF RWY 12/30.

Changes: CHART TITLE, PBN SPECIFICATION BOX, Editorial. TEFGN01-177