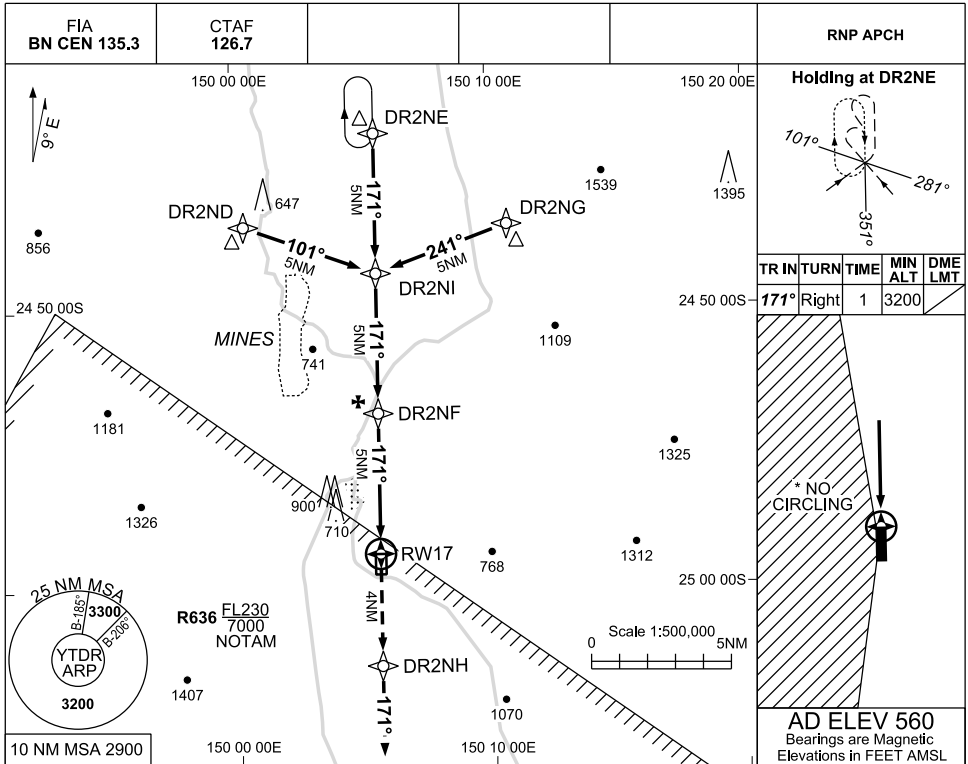


13 JUN 2024

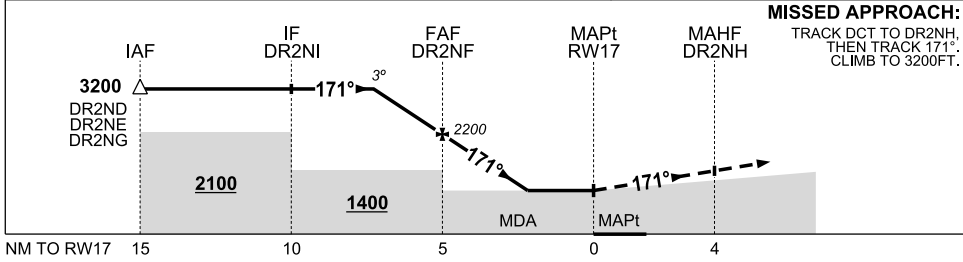
THEODORE, QLD (YTDR)



TR IN	TURN	TIME	MIN ALT	DME LMT
171°	Right	1	3200	

AD ELEV 560
Bearings are Magnetic
Elevations in FEET AMSL

NM TO NEXT WPT	3.2	2	1	DR2NF	4	3	2.4	2.0	RW17					
ALT (3° APCH PATH)	3200	2840	2520	2200	1880	1560	1370	1240						



MISSED APPROACH:
TRACK DCT TO DR2NH,
THEN TRACK 171°.
CLIMB TO 3200FT.

NOTES

- 1. MAX IAS INITIAL: 210KTS
- *2. NO CIRCLING WEST OF RWY 17/35

CATEGORY	A	B	C	D
* CIRCLING	1240 (680-2.4)		1370 (810-4.0)	
ALTERNATE	(1180-4.4)		(1310-6.0)	
	NOT APPLICABLE			

Changes: MSA 25NM SECTOR ADDED

TDRGN01-179