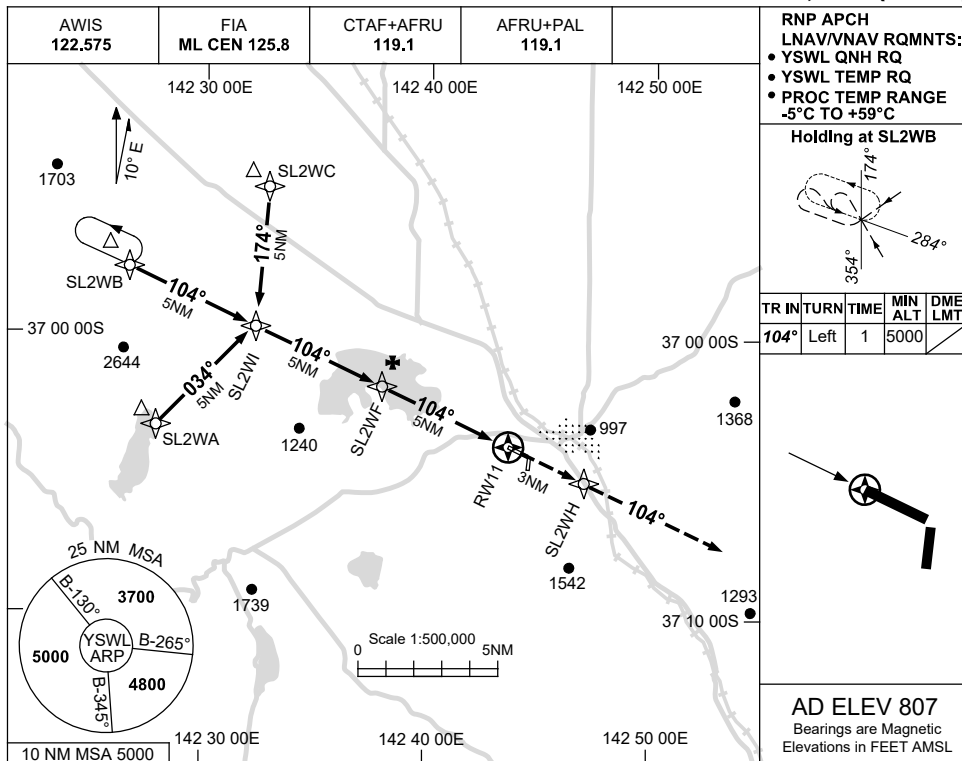


USE QNH

RNP RWY 11
STAWELL, VIC (YSWL)

15 JUN 2023

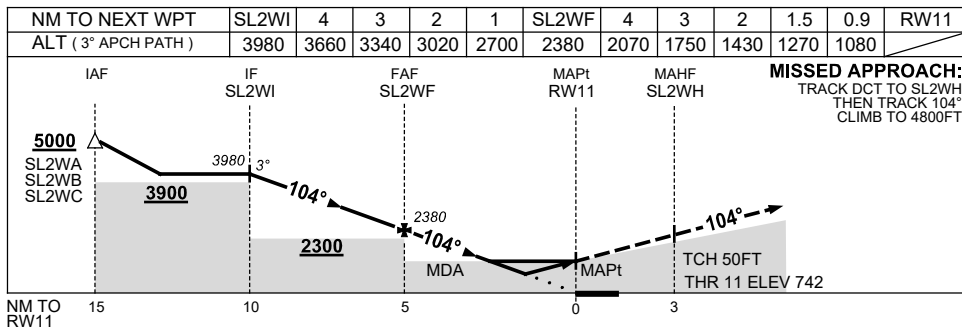


RNP APCH
LNAV/VNAV RQMNTS:
• YSWL QNH RQ
• YSWL TEMP RQ
• PROC TEMP RANGE
-5°C TO +59°C

Holding at SL2WB

TR	INTURN	TIME	MIN ALT	DME LMT
104°	Left	1	5000	

AD ELEV 807
Bearings are Magnetic
Elevations in FEET AMSL



NOTES

CATEGORY	A	B	C	D
LNAV/VNAV		1080 (338-1.9)		NOT APPLICABLE
LNAV		1270 (528-3.0)		
CIRCLING	2170 (1363-2.4)		2470(1663-4.0)	
ALTERNATE	(1863-4.4)		(2163-6.0)	

1. MAX IAS:
INITIAL : 210KT.
HOLDING: 210KT.

Changes: MSA, MISSED APCH TEXT, WPT NAMING, CHART TITLE, PBN SPECIFICATION BOX, Editorial. SWLGN01-175