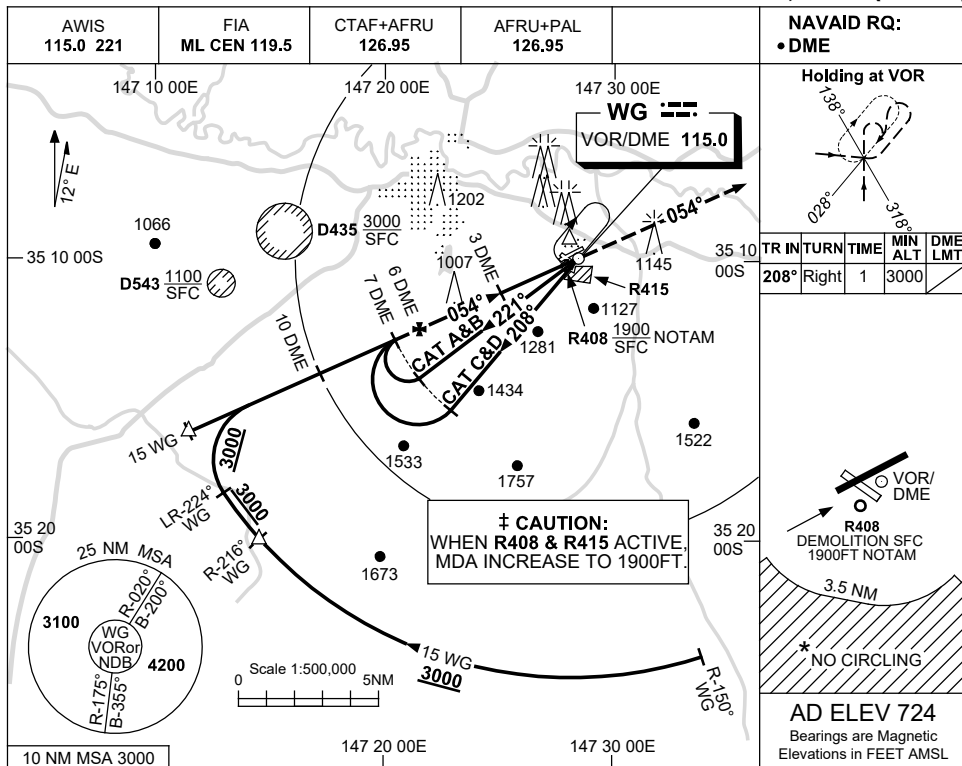


USE QNH

VOR RWY 05

17 JUN 2021

WAGGA WAGGA, NSW (YSWG)



**NAVAID RQ:**  
• DME

**Holding at VOR**

TR	IN	TURN	TIME	MIN ALT	DME LMT
208°	Right		1	3000	

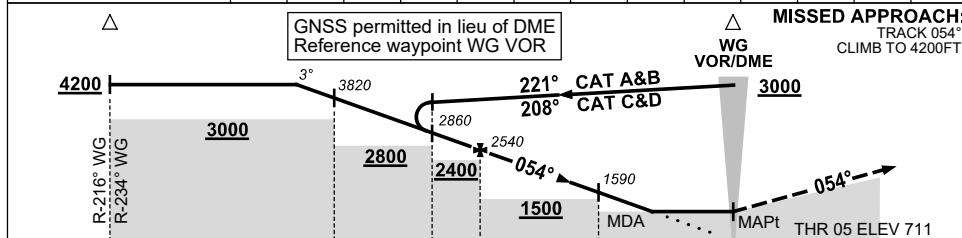
**CAUTION:**  
WHEN R408 & R415 ACTIVE, MDA INCREASE TO 1900FT.

**AD ELEV 724**  
Bearings are Magnetic Elevations in FEET AMSL

**NO CIRCLING**

**R408 DEMOLITION SFC 1900FT NOTAM**

NM TO WG DME	11.2	11	10	9	8	7	6	5	4	3	2.2	
ALT (3° APCH PATH)	4200	4140	3820	3500	3180	2860	2540	2230	1910	1590	1340	



NM TO WG DME: 15, 10, 7, 6, 3, 0

ALT: 4200, 3820, 3000, 2860, 2540, 2400, 1500, 1340

Waypoints: R-216° WG, R-234° WG, R-175° VOR, R-020° VOR, B-200° VOR, B-355° VOR

Angles: 3°, 221°, 208°, 054°

MDA: 1500

MAPt: 0

THR 05 ELEV 711

**NOTES**

CATEGORY	A	B	C	D
S-I VOR/DME	±	1340 (629-3.6)		
CIRCLING *	±	1710 (986-2.4)	1810 (1086-4.0)	2010 (1286-5.0)
ALTERNATE		(1486-4.4)	(1586-6.0)	(1786-7.0)

1. MAX IAS: INITIAL : 210KT.

\* 2. NO CIRCLING IN SECTOR SOUTH OF RWY 05/23 AND RWY 12/30 BEYOND 3.5NM.

Changes: FROM SUP H124/20.

SWGVO01-167