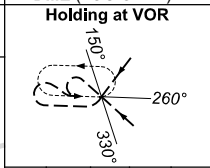
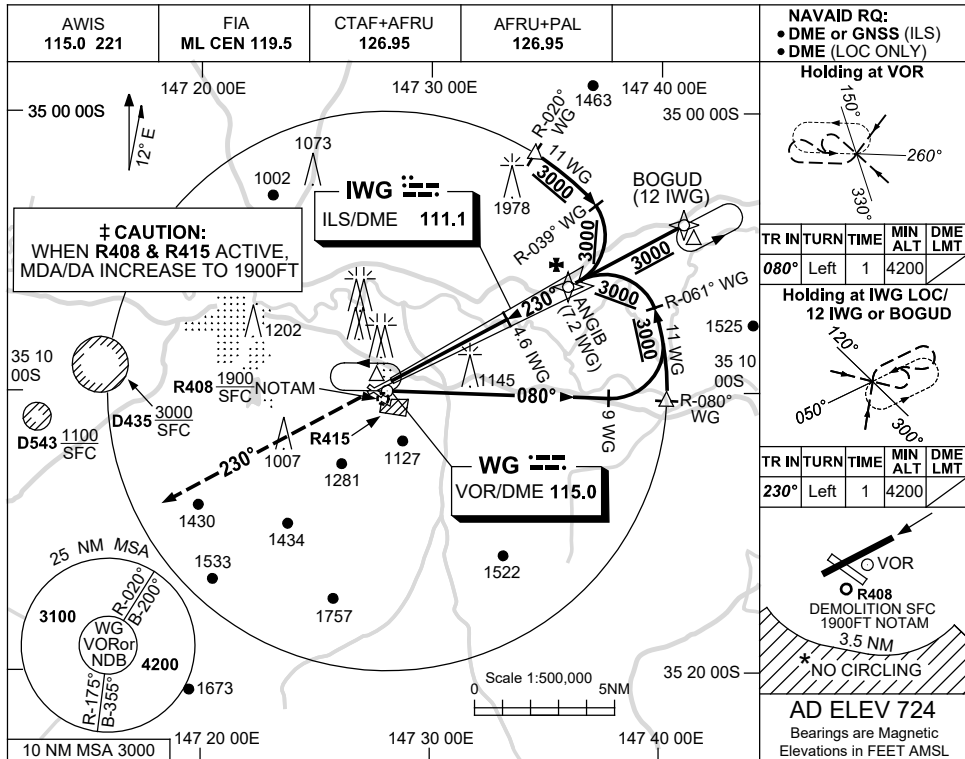


USE QNH

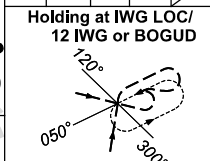
ILS-Z or LOC-Z RWY 23

17 JUN 2021

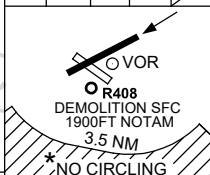
WAGGA WAGGA, NSW (YSWG)



TR	IN	TURN	TIME	MIN	DME
080°	Left	1	4200		LMT

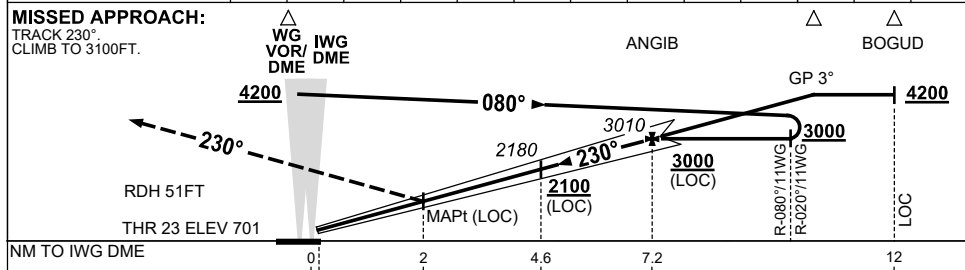


TR	IN	TURN	TIME	MIN	DME
230°	Left	1	4200		LMT



AD ELEV 724
Bearings are Magnetic
Elevations in FEET AMSL

DIST TO IWG DME	2.4	3	4	4.6	6	7	7.2	8	9	10	11		
ALT (3° APCH PATH)	1470	1660	1980	2180	2620	2930	3010	3250	3570	3890	4200		



NM TO IWG DME	0	2	4.6	7.2	12
NM TO THR 23	0	1.9	4.5	7.1	11.9

NOTES

- MAX IAS: INITIAL : 210KT.
- NO CIRCLING IN SECTOR SOUTH OF RWY 05/23 AND RWY 12/30 BEYOND 3.5NM.

CATEGORY	A	B	C	D
S-I ILS/DME	‡	1010(309) 1.7 (VIS 1.5 WITH ACTUAL QNH)		
S-I LOC/DME	‡	1470 (769-4.4)		
CIRCLING *	‡	1710 (986-2.4)	1810 (1086-4.0)	2010(1286-5.0)
ALTERNATE		(1486-4.4)	(1586-6.0)	(1786-7.0)

Changes: FROM SUP H124/20.

SWGII02-167