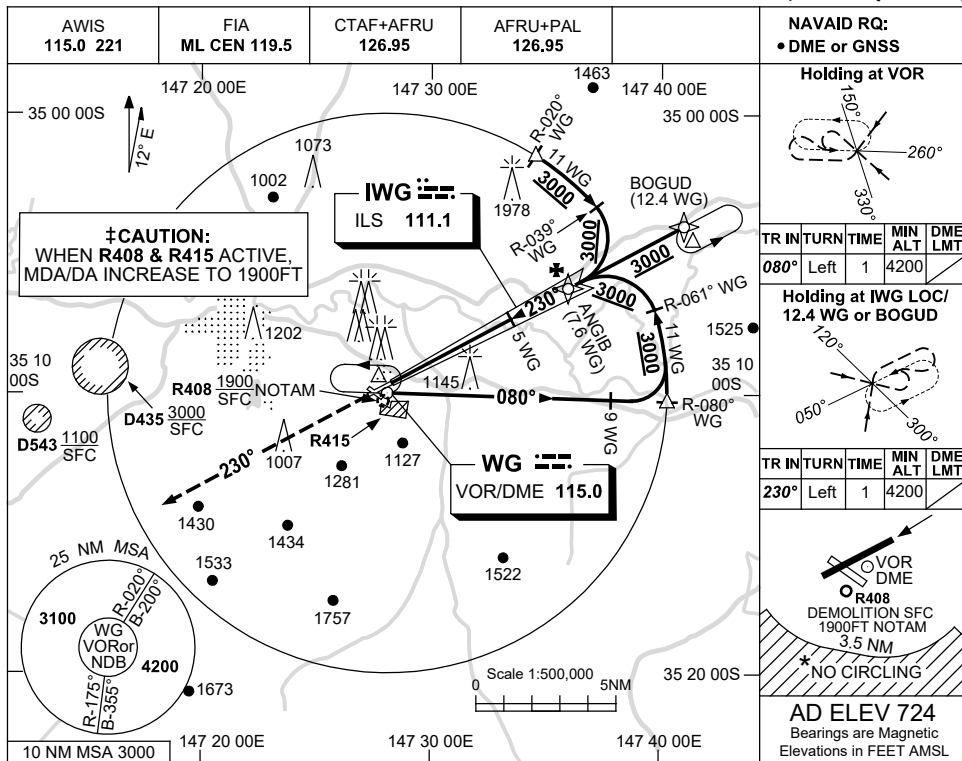


USE QNH

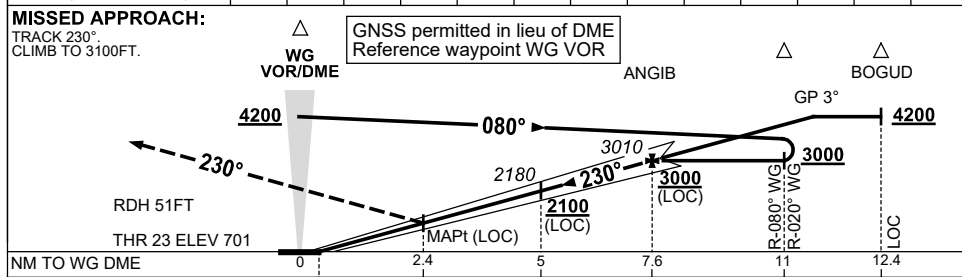
ILS-Y or LOC-Y RWY 23

WAGGA WAGGA, NSW (YSWG)

17 JUN 2021



DIST TO WG DME	2.8	3	4	5	6	7	7.6	8	9	10	11.4		
ALT (3° APCH PATH)	1470	1540	1860	2180	2490	2810	3010	3130	3450	3770	4200		



NM TO WG DME	0	2.4	5	7.6	11	12.4
NM TO THR 23	0	1.9	4.5	7.1	10.5	11.9

NOTES

1. MAX IAS: INITIAL : 210KT.
- * 2. NO CIRCLING IN SECTOR SOUTH OF RWY 05/23 AND RWY 12/30 BEYOND 3.5NM.

CATEGORY	A	B	C	D
S-I ILS/DME	‡	1010 (309) 1.7 (VIS 1.5 WITH ACTUAL QNH)		
S-I LOC/DME	‡	1470 (769-4.4)		
CIRCLING *	‡	1710 (986-2.4)	1810 (1086-4.0)	2010 (1286-5.0)
ALTERNATE		(1486-4.4)	(1586-6.0)	(1786-7.0)

Changes: FROM SUP H124/20.

SWGII01-167