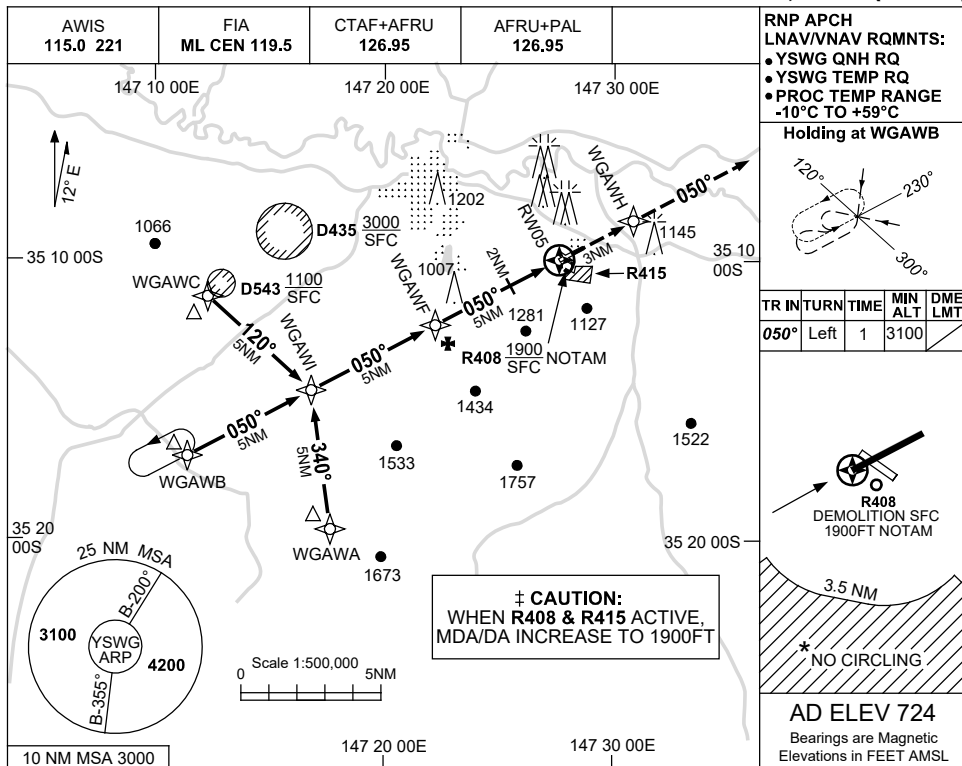


USE QNH

RNP RWY 05

23 MAR 2023

WAGGA WAGGA, NSW (YSWG)



RNP APCH
LNAV/VNAV RQMNTS:
 • YSWG QNH RQ
 • YSWG TEMP RQ
 • PROC TEMP RANGE -10°C TO +59°C

Holding at WGAWB

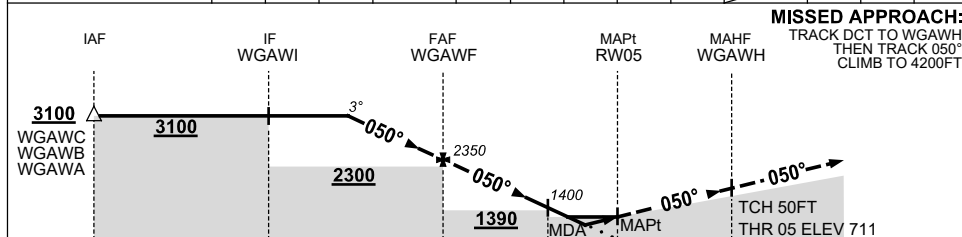
TR	IN	TURN	TIME	MIN ALT	DME LMT
050°	Left	1	3100		

R408
 DEMOLITION SFC
 1900FT NOTAM

AD ELEV 724
 Bearings are Magnetic
 Elevations in FEET AMSL

NO CIRCLING

NM TO NEXT WPT	2.3	2	1	WGAWF	4	3	2	1.8	0.9	RW05
ALT (3° APCH PATH)	3100	2990	2670	2350	2030	1720	1400	1340	1050	



MISSED APPROACH:
 TRACK DCT TO WGAWH,
 THEN TRACK 050°,
 CLIMB TO 4200FT.

TCH 50FT
 THR 05 ELEV 711

NM TO RW05: 15, 10, 5, 2, 0, 3

NOTES

CATEGORY	A	B	C	D
LNAV/VNAV	±	1050 (339-1.9)		
LNAV	±	1340 (629-3.6)		
CIRCLING *	±	1710 (986-2.4)	1810 (1086-4.0)	2010 (1286-5.0)
ALTERNATE		(1486-4.4)	(1586-6.0)	(1786-7.0)

- MAX IAS:
INITIAL : 210KT.
- NO CIRCLING IN SECTOR SOUTH OF RWY 05/23 AND RWY 12/30 BEYOND 3.5NM.

Changes: CHART TITLE, PBN SPECIFICATION BOX.

SWGGN01-174