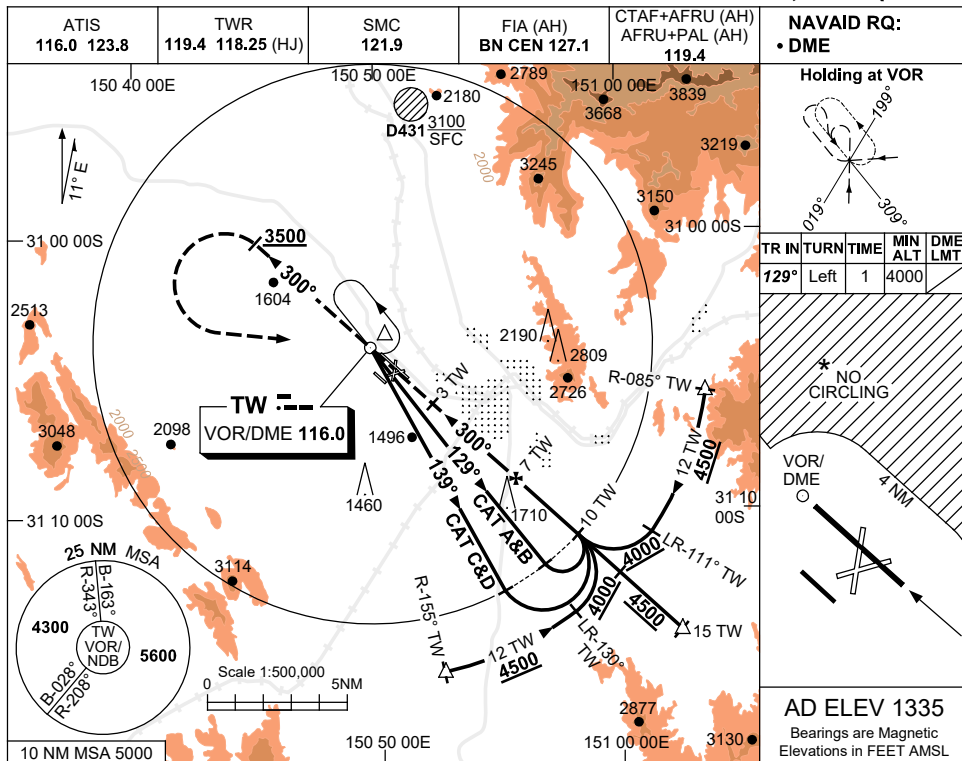


USE QNH

VOR RWY 30R

16 JUN 2022

TAMWORTH, NSW (YSTW)



**NAVAID RQ:**  
• DME

**Holding at VOR**

TR IN	TURN	TIME	MIN ALT	DME LMT
129°	Left	1	4000	

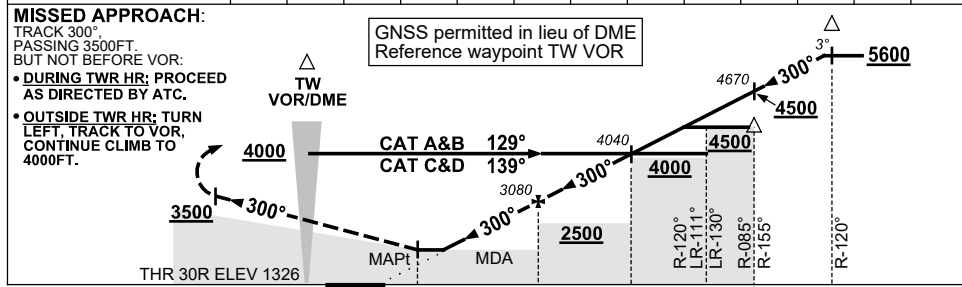
**NO CIRCLING**

VOR/DME

AD ELEV 1335

Bearings are Magnetic  
Elevations in FEET AMSL

DIST BY TW DME	3.6	4	5	6	7	8	9	10	11.5	12	13	14	14.9
ALT (3° APCH PATH)	1990	2130	2440	2760	3080	3400	3720	4040	4500	4670	4990	5310	5600



NM BY TW DME	0	3	7	10	12	12	15
THR 30R ELEV 1326							

- NOTES**
- MAX IAS: INITIAL : 210KT. HOLDING: 210KT.
  - CAT A,B&C NO CIRCLING NE OF RWY 12L/30R BEYOND 4NM. MAX IAS 170KT.
  - CAT D NO CIRCLING NE OF RWY 12L/30R.
  - COLOUR: SEE SPEC NOTICES.

CATEGORY	A	B	C	D
S-I VOR/DME	1990 (664-3.8)			
CIRCLING *	2110 (775-2.4)	2400 (1065-4.0)	2400 # (1065-5.0)	
ALTERNATE	(1275-4.4)	(1565-6.0)	(1565-7.0)	

Changes: UNLIT 1710FT OBST.

STWV002-171