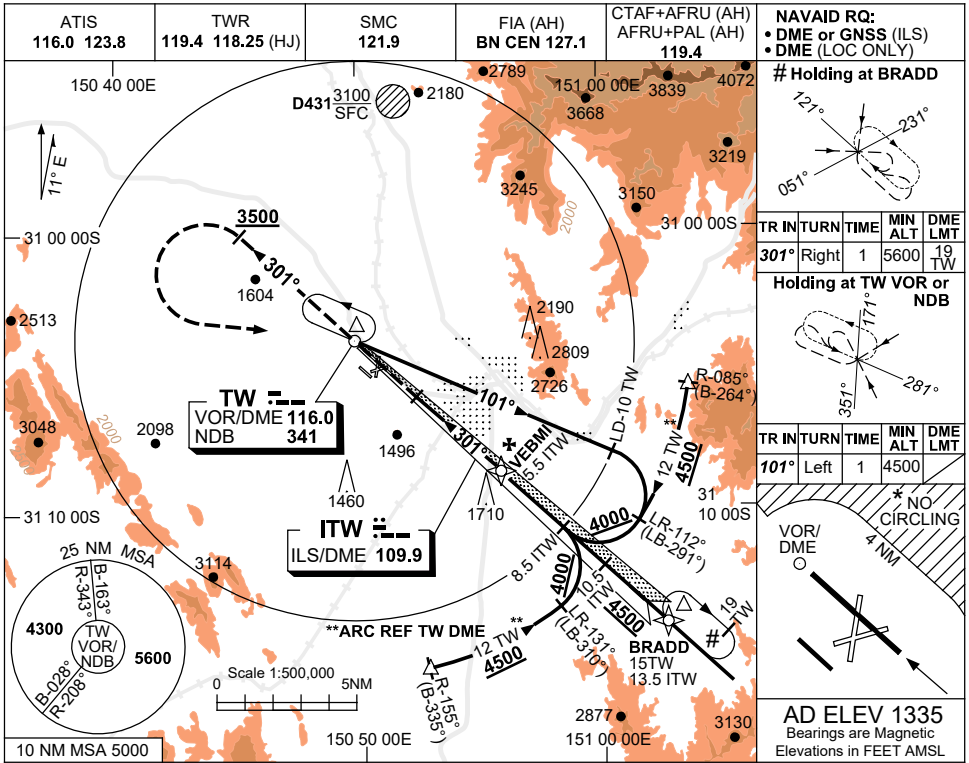


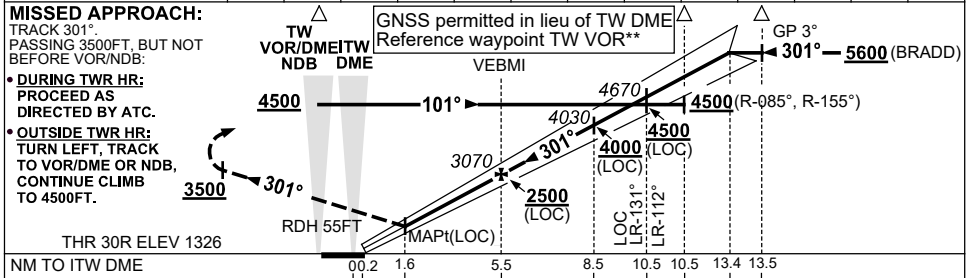
USE QNH

ILS-Z or LOC-Z RWY 30R  
**TAMWORTH, NSW (YSTW)**

16 JUN 2022



DIST TO ITW DME	2.1	3	4	5	5.5	7	8	8.5	10	10.5	12	13	13.4
ALT (3° APCH PATH)	1990	2280	2600	2910	3070	3550	3870	4030	4500	4670	5140	5460	5600



NM TO ITW DME	00.2	1.6	5.5	8.5	10.5	10.5	13.4	13.5
NM TO RWY 30R	0	1.5	5.4	8.4	10.4	13.3	13.4	

- NOTES**
- MAX IAS: HOLDING AT BRADD: 210KTS.
  - CAT A,B&C NO CIRCLING NE OF RWY 12L/30R BEYOND 4NM. MAX IAS 170KTS.
  - CAT D NO CIRCLING NE OF RWY 12L/30R.
  - COLOUR: SEE SPEC NOTICES.

CATEGORY	A	B	C	D
S-I ILS		1740 (414)	2.4(VIS 1.8 WITH ACTUAL QNH)	
S-I LOC/DME		1990 (664-3.8)		
CIRCLING*	2110 (775-2.4)	2400 (1065-4.0)	2400#(1065-5.0)	
ALTERNATE	(1275-4.4)	(1565-6.0)	(1565-7.0)	

Changes: UNLIT 1710FT OBST.

STWII01-171