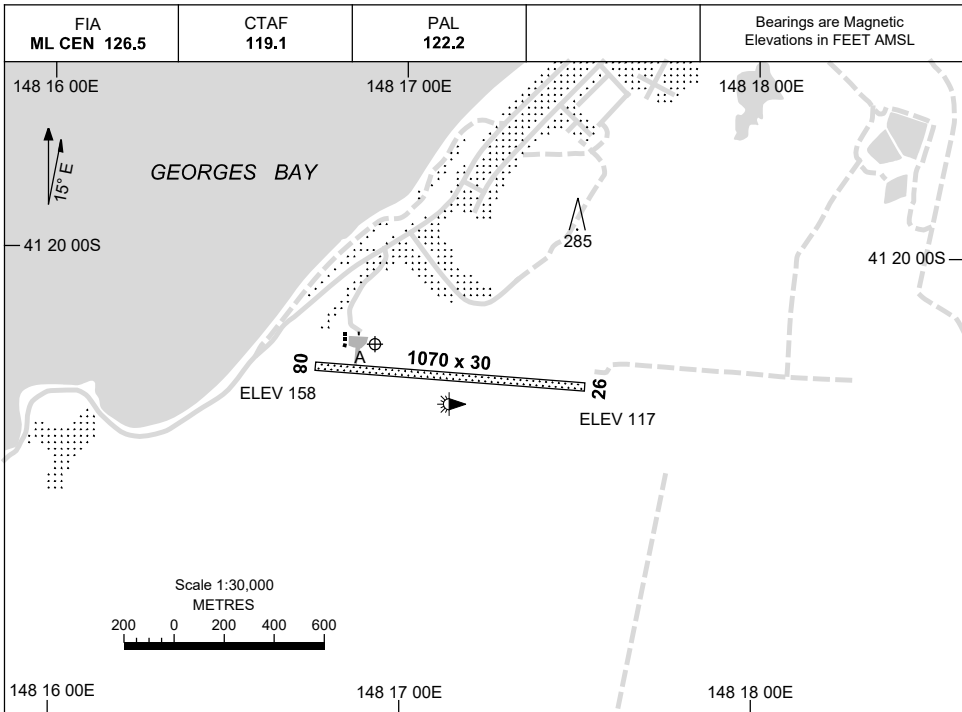


5 SEP 2024

AD ELEV 158  
41 20 12S 148 16 55E

AERODROME CHART  
**SAINT HELENS, TAS (YSTH)**



	<b>AERODROME LIGHTING</b>
<b>RWY</b>	TAXIWAY : BLUE EDGE RL : PAL 122.2 , SDBY (EMERG, MANUAL ACT, 45 MIN PN, ARO 03 6376 7900)
<b>08</b> <small>079</small>	LIRL
<small>259</small> <b>26</b>	LIRL

**NOTES**

1. NIGHT CIRCUITS MUST REMAIN E OF ST HELENS TOWN AND OVER WATER WHEN AIRCRAFT ARE WEST OF THE AERODROME.
2. AWIS (PHONE) 03 6283 8606
3. FIA FREQ 126.5 AVBL CIRCUIT AREA.

Changes: BUILDING AND TWY, Editorial.

STHAD01-180