

**STANDARD INSTRUMENT ARRIVAL (STAR)
BOREE FOUR PAPA ARRIVAL (RNAV)
SYDNEY/KINGSFORD SMITH, NSW (YSSY)**

28 NOV 2024

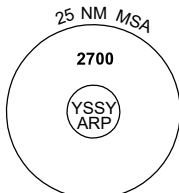
ATIS 118.55 126.25	APP 124.4	DIRECTOR 126.1	TWR 120.5	SMC E OF RWY 16R/34L 121.7 W OF RWY 16R/34L 126.5	Bearings are Magnetic Elevations in FEET AMSL
-----------------------	--------------	-------------------	--------------	---	--

NOT TO SCALE

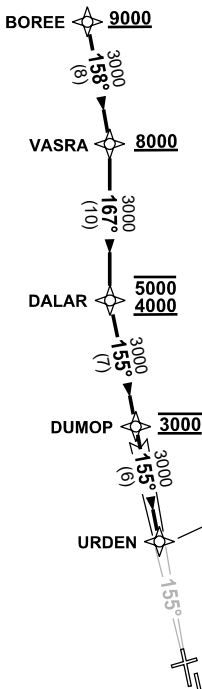


**PRM OPS *
DUAL VHF COMS
REQUIRED**

ATC APCH SPEEDS	
NM FM TD	SPEED KT
URDEN	185 -160
5	160 -150



10 NM MSA 2100



**SPEED
MAX IAS 250KT
BELOW 10,000ft**

RNP 1

**MAX IAS
185KT**

ARRIVAL: BOREE FOUR PAPA

- RWY 16R:**
- Cross BOREE AT or ABV 9000ft, then
 - From BOREE track 158° to VASRA
 - Cross VASRA AT or ABV 8000ft
 - Turn RIGHT, track 167° to DALAR
 - Cross DALAR between 4000ft and 5000ft
 - Turn LEFT, track 155° to DUMOP
 - Cross DUMOP AT 3000ft
 - From DUMOP track 155° via FINAL APCH COURSE to URDEN
 - MAX IAS 185KT from URDEN
 - Track via GLS RWY 16R or ILS RWY 16R

*** PRM OPS : SEE PRM USER INST FOR ADDITIONAL REQUIREMENTS.**

**COMMUNICATIONS FAILURE: PROCEDURE IN IMC
IF ABLE CTC SY APP +61 2 9556 6515**

- Squawk 7600, comply with vertical navigation requirements, but not below MSA.
- Track via the latest STAR clearance to the nominated runway, then fly the most suitable approach in accordance with ERSA EMERG Section 1.5.

Changes: BOREE ALT RQMNTS, VALIDITY INDICATOR.

SSYSR09-181