

**STANDARD INSTRUMENT ARRIVAL (STAR)  
RIVET THREE ARRIVAL (RNAV)  
SYDNEY/KINGSFORD SMITH, NSW (YSSY)**

24 MAR 2022

ATIS 118.55 126.25	APP 128.3	DIRECTOR 125.3 126.1	TWR RWYS 16R/34L, 07/25 120.5 RWYS 16L/34R 124.7	SMC E OF RWY 16R/34L 121.7 W OF RWY 16R/34L 126.5	Bearings are Magnetic Elevations in FEET AMSL
-----------------------	--------------	----------------------------	--	---	--

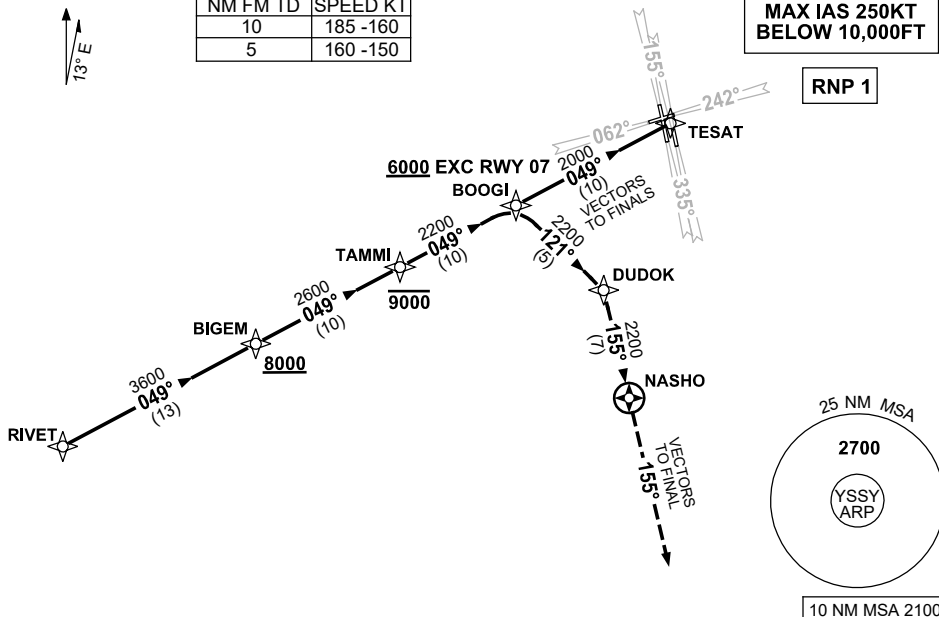
NOT TO SCALE



ATC APCH SPEEDS			
NM	FM	TD	SPEED KT
	10		185 -160
	5		160 -150

**SPEED  
MAX IAS 250KT  
BELOW 10,000FT**

**RNP 1**



**ARRIVAL: RIVET THREE**

- From RIVET track 049° to BIGEM  
**Cross** BIGEM AT or ABV 8000FT
- Track 049° to TAMMI  
**Cross** TAMMI AT or BLW 9000FT

**RWY 07:**

- Track 049° to BOOGI
- Track 049° to TESAT
- EXPECT radar vectors to final

**RWY 16L, 16R or 25:**

- Track 049° to BOOGI  
**Cross** BOOGI AT or ABV 6000FT
- Track 049° to TESAT
- EXPECT radar vectors to final

**RWY 34L or 34R:**

- Track 049° to BOOGI  
**Cross** BOOGI AT or ABV 6000FT
- Turn RIGHT, track 121° to DUDOK
- Turn RIGHT, track 155° to NASHO
- Track 155°, EXPECT radar vectors to final

**COMMUNICATIONS FAILURE: PROCEDURE IN IMC  
IF ABLE CTC SY APP +61 2 9556 6515**

- Squawk 7600, comply with vertical navigation requirements, but not below MSA.
- Track via the latest STAR clearance to the nominated runway, then fly the most suitable approach in accordance with ERSA EMERG Section 1.5.

Changes: Editorial.

SSYSR05-170