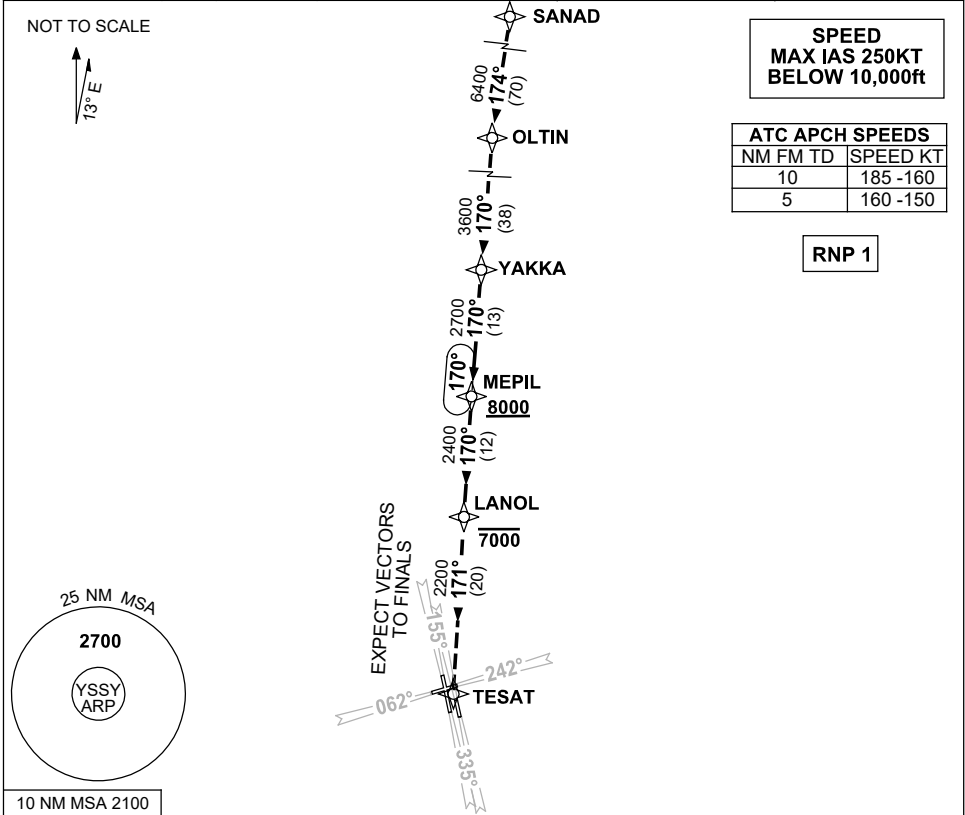


**STANDARD INSTRUMENT ARRIVAL (STAR)  
MEPIL THREE ARRIVAL (RNAV)  
SYDNEY/KINGSFORD SMITH, NSW (YSSY)**

**24 MAR 2022**

ATIS 118.55 126.25	APP 124.4	DIRECTOR 125.3 126.1	TWR RWYS 16R/34L, 07/25 120.5 RWYS 16L/34R 124.7	SMC E OF RWY 16R/34L 121.7 W OF RWY 16R/34L 126.5	Bearings are Magnetic Elevations in FEET AMSL
-----------------------	--------------	----------------------------	--	---	--



10 NM MSA 2100

**TRANSITIONS:**

**SANAD:**

- From SANAD to MEPIL
- Track 174° to OLTIN
  - Turn LEFT track 170° to YAKKA
  - Track 170° to MEPIL
- Cross** MEPIL AT or ABV 8000ft  
Then follow ARRIVAL instructions

**ARRIVAL:**

From MEPIL

- MEPIL THREE**
- Track 170° to LANOL
- Cross** LANOL AT or BLW 7000ft
- Track 171° to TESAT
- EXPECT radar vectors to final approach course after LANOL

**COMMUNICATIONS FAILURE: PROCEDURE IN IMC  
IF ABLE CTC SY APP +61 2 9556 6515**

- Squawk 7600, comply with vertical navigation requirements, but not below MSA.
- Track via the latest STAR clearance to the nominated runway, then fly the most suitable approach in accordance with ERSA EMERG Section 1.5.

Changes: Editorial.

SSYSR01-170