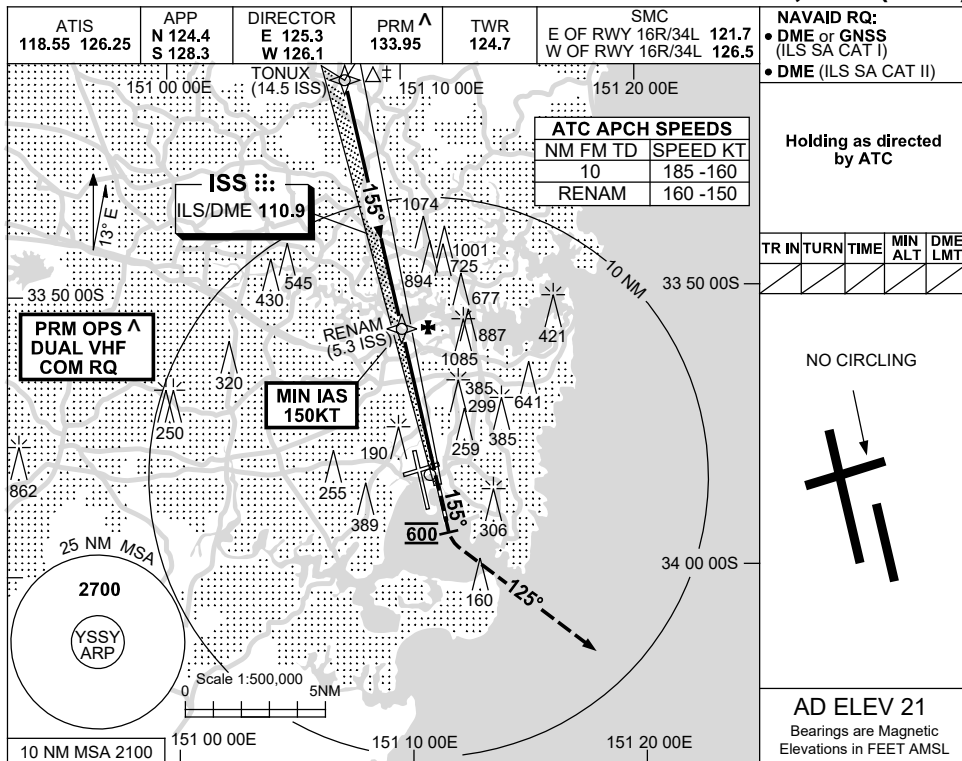
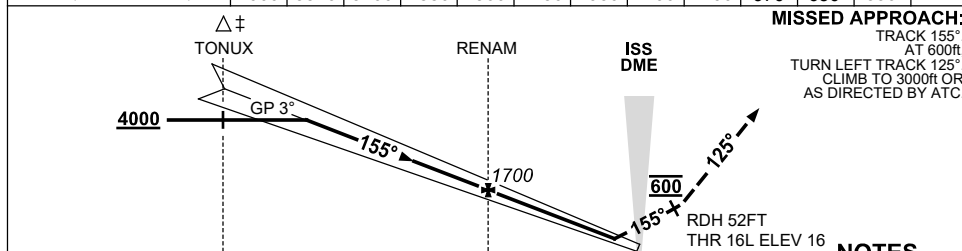


**USE QNH** ILS RWY 16L - Page 2  
**SYDNEY/KINGSFORD SMITH, NSW (YSSY)**

13 JUN 2024



NM TO ISS DME	12.5	11	10	9	8	7	6	5.3	4	3	2	1	
ALT (3° APCH PATH)	4000	3520	3200	2880	2560	2250	1930	1700	1290	970	650	330	



NM TO ISS DME	14.5	5.3	0
NM TO THR 16L	14.3	5.1	0

- NOTES**
- ‡1. ACFT MAY BE RADAR VECTORED TO FNA.
  - ‡2. SIMULTANEOUS APCH AUTHORISED WITH RWY 16R. SEE PRM USER INSTRUCTIONS FOR ADDN RQMNTS.
  - #3. SPECIAL AIRCREW & ACFT CERTIFICATION REQUIRED.
  - \$4. CAT A, B, C 350 RVR CAT D 400RVR.

CATEGORY	A	B	C	D
S-I ILS SA CAT II #		RA 101 DA 116 (100)	350/400	RVR \$
S-I ILS SA CAT I #		RA 152 DA 166 (150)	450	RVR

Changes: ABN DCMSD, Editorial.

SSYII22-179

**CAUTION: CLOSELY SPACED PARALLEL RUNWAYS <sup>^</sup>**