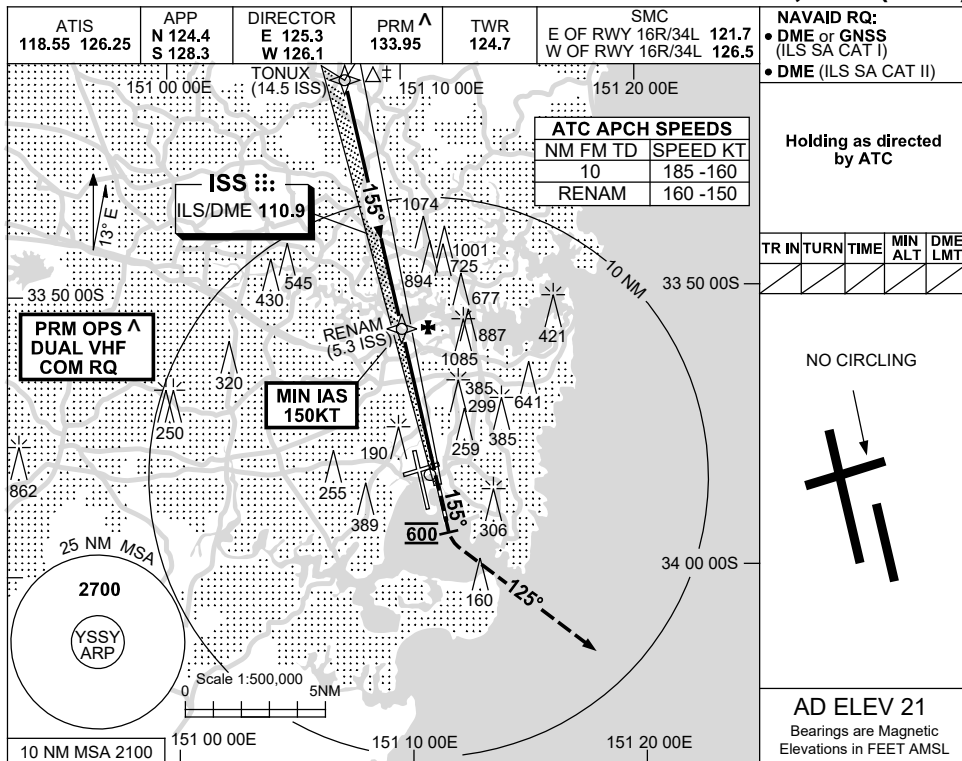
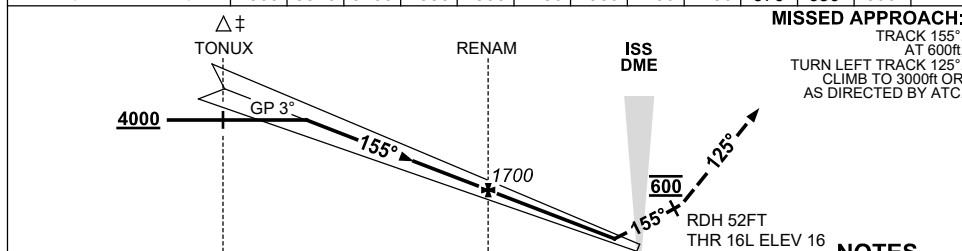


USE QNH ILS RWY 16L - Page 2
SYDNEY/KINGSFORD SMITH, NSW (YSSY)

13 JUN 2024



NM TO ISS DME	12.5	11	10	9	8	7	6	5.3	4	3	2	1	
ALT (3° APCH PATH)	4000	3520	3200	2880	2560	2250	1930	1700	1290	970	650	330	



NM TO ISS DME	14.5		5.3		
NM TO THR 16L	14.3		5.1		0

CATEGORY	A	B	C	D
S-I ILS SA CAT II #		RA 101 DA 116 (100)	350/400 RVR §	
S-I ILS SA CAT I #		RA 152 DA 166 (150)	450 RVR	

NOTES

- ‡1. ACFT MAY BE RADAR VECTORED TO FNA.
- ‡2. SIMULTANEOUS APCH AUTHORISED WITH RWY 16R. SEE PRM USER INSTRUCTIONS FOR ADDN RQMNTS.
- #3. SPECIAL AIRCREW & ACFT CERTIFICATION REQUIRED.
- §4. CAT A, B, C 350 RVR CAT D 400RVR.

Changes: ABN DCMSD, Editorial.

SSYII22-179

CAUTION: CLOSELY SPACED PARALLEL RUNWAYS [^]